

MICHIGAN JUDGES' RETIREMENT SYSTEM

**Annual Comprehensive Financial Report
for the Fiscal Year Ended September 30, 2024**

MJRS

A Fiduciary Component Unit of the State of Michigan

Prepared by:
Financial Services
For
Office of Retirement Services
P.O. Box 30171
Lansing, Michigan 48909-7671
517-284-4400
1-800-381-5111

TABLE OF CONTENTS

INTRODUCTORY SECTION.....	1
Certificate of Achievement.....	2
Public Pension Standards Award.....	3
Letter of Transmittal.....	4
Administrative Organization.....	10
Retirement Board Members.....	10
Advisors and Consultants.....	10
Organization Chart.....	11
FINANCIAL SECTION.....	13
Independent Auditor's Report.....	14
Management's Discussion and Analysis.....	17
Financial Highlights.....	17
The Statement of Plan Fiduciary Net Position and the Statement of Changes In Plan Fiduciary Net Position.....	17
Financial Analysis.....	17
Additions To Plan Fiduciary Net Position.....	18
Deductions From Plan Fiduciary Net Position.....	18
Retirement System as a Whole.....	19
Contacting System Financial Management.....	19
Basic Financial Statements.....	20
Statement of Pension Plan and Other Postemployment Benefit Plan Fiduciary Net Position.....	20
Statement of Changes in Pension Plan and Other Postemployment Benefit Plan Fiduciary Net Position.....	21
Notes to Basic Financial Statements.....	22
Note 1 – Plan Description.....	22
Note 2 – Summary of Significant Accounting Policies.....	26
Note 3 – Contributions.....	28
Note 4 – Net Pension Liability.....	29
Note 5 – Net OPEB Liability.....	33
Note 6 – Investments.....	36
Note 7 – Commitments and Contingencies.....	45
Required Supplementary Information.....	46
Schedule of Changes in Net Pension Liability.....	46
Schedule of Changes in Net OPEB Liability.....	48
Schedules of Contributions.....	50
Schedules of Investment Returns.....	51
Note to Required Supplementary Information.....	52
Note A – Description.....	52
Supporting Schedules.....	54
Summary Schedule of Pension Plan Administrative and Other Expenses.....	54
Summary Schedule of OPEB Plan Administrative and Other Expenses.....	55
Schedule of Investment Expenses.....	56
Schedule of Payments for Professional Services.....	56
Detail of Changes in Plan Fiduciary Net Position.....	57
INVESTMENT SECTION.....	59
Report on Investment Activity.....	60
Introduction.....	60
Investment Policy & Goals.....	60
Asset Allocation.....	61
Investment Authority.....	61
Investment Results.....	61
Rate of Return on Investments.....	68
Pension Plan Investment Results.....	68
OPEB Investment Results.....	69

Largest Assets Held	70
Largest Stock Holdings	70
Largest Bond Holdings	70
Schedule of Investment Fees	71
Schedule of Investment Commissions.....	72
Investment Summary	73
ACTUARIAL SECTION	75
Actuary's Certification	76
Summary of Actuarial Assumptions and Methods	79
Schedule 1.....	80
Schedule 2.....	80
Schedules of Active Member Valuation Data	81
Schedule of Active Member Pension Valuation Data	81
Schedule of Active Member OPEB Valuation Data	81
Schedule of Changes in Retirement Rolls	82
Schedule of Changes in the OPEB Rolls	82
Prioritized Solvency Test	83
Pension Benefits	83
Other Postemployment Benefits	84
Analysis of System Experience – Pension	85
Gains/(Losses) in Accrued Liabilities	85
Analysis of System Experience – OPEB	86
Gains/(Losses) in Accrued Liabilities	86
Summary of Plan Provisions.....	87
Regular Retirement	87
Early Retirement.....	87
Deferred Retirement.....	87
Disability Retirement	87
Death Before or After Retirement.....	87
Post Retirement Cost-of-Living Adjustments	87
Member Contributions	88
Defined Contribution Legislation – (Public Act 523 of 1996).....	88
Schedules of Funding Progress.....	89
Schedule of Funding Progress – Pension Benefits.....	89
Schedule of Funding Progress – Other Postemployment Benefits.....	89
STATISTICAL SECTION.....	91
Contents.....	92
Financial Trends	92
Operating Information.....	92
Schedules of Additions by Source	93
Schedule of Pension Plan Additions by Source	93
Schedule of OPEB Plan Additions by Source	93
Total Additions.....	93
Schedules of Deductions by Type	94
Schedule of Pension Plan Deductions by Type	94
Schedule of OPEB Plan Deductions by Type	94
Total Deductions	94
Schedules of Changes in Fiduciary Net Position.....	96
Schedule of Changes in Fiduciary Net Position – Pension Plan.....	96
Schedule of Changes in Fiduciary Net Position – OPEB Plan.....	96
Schedules of Benefits and Refunds by Type.....	98
Schedule of Pension Benefits and Refunds by Type.....	98
Schedule of Other Postemployment Benefits and Refunds by Type.....	98
Total Benefit Deductions	98
Schedules of Retired Members by Type of Benefit	99

Schedule of Retired Members by Type of Pension Benefits.....	99
Schedule of Retired Members by Type of Other Postemployment Benefits.....	99
Schedule of Other Postemployment Benefits.....	100
Schedules of Average Benefit Payments	101
Schedule of Average Benefit Payments – Pension	101
Schedule of Average Benefit Payments – Health	102
Schedule of Average Benefit Payments – Dental	103
Schedule of Average Benefit Payments – Vision.....	104
Schedule of Principal Participating Courts.....	105
Ten Year History of Membership	106
Schedule of Participating Courts.....	107
ACKNOWLEDGMENTS	109

This page was intentionally left blank.

INTRODUCTORY SECTION

Certificate of Achievement
Public Pension Standards Award
Letter of Transmittal
Administrative Organization

INTRODUCTORY SECTION

CERTIFICATE OF ACHIEVEMENT



Government Finance Officers Association

Certificate of Achievement for Excellence in Financial Reporting

Presented to

Michigan Judges' Retirement System

For its Annual Comprehensive
Financial Report
For the Fiscal Year Ended

September 30, 2023

Christopher P. Morill

Executive Director/CEO

INTRODUCTORY SECTION

PUBLIC PENSION STANDARDS AWARD



Public Pension Coordinating Council

***Public Pension Standards Award
For Funding and Administration
2024***

Presented to

Michigan Office of Retirement Services

In recognition of meeting professional standards for
plan funding and administration as
set forth in the Public Pension Standards.

Presented by the Public Pension Coordinating Council, a confederation of

National Association of State Retirement Administrators (NASRA)
National Conference on Public Employee Retirement Systems (NCPERS)
National Council on Teacher Retirement (NCTR)

A handwritten signature in black ink, reading 'Alan H. Winkle'. The signature is fluid and cursive, with the first name 'Alan' being more prominent.

Alan H. Winkle
Program Administrator

INTRODUCTORY SECTION

LETTER OF TRANSMITTAL

Michigan Judges'
Retirement System
P.O. Box 30171
Lansing, Michigan 48909-7671
Telephone 517- 284-4400
Outside Lansing 1-800-381-5111

STATE OF MICHIGAN

GRETCHEN WHITMER, Governor

DEPARTMENT OF TECHNOLOGY, MANAGEMENT & BUDGET

January 30, 2025

The Honorable Gretchen Whitmer
Governor, State of Michigan,

Members of the Legislature
State of Michigan,

Retirement Board Members
and
Members, Retirees and Beneficiaries

Ladies and Gentlemen:

We are pleased to present the annual comprehensive financial report of the Michigan Judges' Retirement System (System) for fiscal year 2024.

INTRODUCTION TO REPORT

The System was established by legislation under Public Act 234 of 1992 (the Michigan Judges Retirement Act) which consolidated the Judges' and former Probate Judges' retirement systems. The System is administered by the Office of Retirement Services (ORS). The number of active and retired members and beneficiaries of the System is presented in Note 1 of the financial statements in the Financial Section of this report. The purpose of the System is to provide retirement, disability, death, and healthcare benefits for all members. The services performed by ORS staff provide benefits to members, retirees, and beneficiaries.

Responsibility

Responsibility for both the accuracy of the data and the completeness and fairness of the presentation, including all disclosures, rests with the leadership team of the System. To the best of our knowledge and belief, the enclosed data is accurate in all material respects and is reported in a manner designed to present fairly the financial position and results of operations of the System.

Internal Control Structure

The leadership team of the System is responsible for maintaining adequate internal accounting controls designed to provide reasonable assurance that transactions are executed in accordance with management's general or specific authorization, and are recorded as necessary to maintain accountability for assets and to permit preparation of financial statements in accordance with accounting principles generally accepted in the United States of America. The internal control structure is designed to provide reasonable assurance regarding the safekeeping of assets and reliability of all financial records.

INTRODUCTORY SECTION

LETTER OF TRANSMITTAL

The concept of reasonable assurance recognizes that the cost of a control should not exceed the benefits likely to be derived and that the valuation of costs and benefits requires estimates and judgments by management. This internal control structure includes maintaining written policies and procedures. Discussion and analysis of fiduciary net position and related additions and deductions are presented in the Management Discussion and Analysis which can be found immediately following the Independent Auditor's Report.

Independent Auditors and Actuary

The Office of the Auditor General (OAG), independent auditors, conducted an annual audit of the System. The independent auditor's report on the System's financial statements is included in the Financial Section in this report.

An actuarial valuation is conducted annually. The purpose of the valuation is to evaluate the mortality, service, compensation, and other financial experience of the System and to recommend employer contributions for the subsequent year. The annual actuarial valuation was completed by Gabriel, Roeder, Smith & Company for the fiscal year ended September 30, 2023, and recommends employer contributions for the fiscal year ended September 30, 2024. Actuarial certification and supporting statistics are included in the Actuarial Section of this report.

Management's Discussion and Analysis (MD&A)

Generally Accepted Accounting Principles (GAAP) require that management provide a narrative introduction, overview, and analysis to accompany the Basic Financial Statements in the form of an MD&A. This letter of transmittal is intended to complement the MD&A and should be read in conjunction with it. The MD&A can be found immediately following the Independent Auditor's Report.

PROFILE OF THE GOVERNMENT

Public Act 234 of 1992 authorized the merger of the Probate Judges' Retirement Fund into the Judges' Retirement Fund by requiring the consolidation of all assets, rights, and obligations under the former Judges' and Probate Judges' Retirement Funds to establish the Judges' Retirement System. A 9-member board and the director of the Department of Technology, Management, and Budget (DTMB), govern the system. Executive Order 2015-13 created a State of Michigan Retirement Board responsible for the functions, duties, and responsibilities of the State Employees' Retirement System, the Judges' Retirement System, and the Military Retirement Provisions. Public Act 523 of 1996, effective March 31, 1997 closed the plan to new entrants. Judges' or state officials newly appointed or elected on or after March 31, 1997, become members of the State's defined contribution (DC) plan. The System serves approximately 530 members. Financing comes from member contributions, court filing fees as provided under law, investment earnings, and legislative appropriations. A detailed plan description is included in Note 1 of the Financial Section in this report.

ECONOMIC CONDITIONS AND OUTLOOK

Despite a long-term mix of both challenging and robust economic times, the System continues to show steady performance.

Investments

The State of Michigan Investment Board is the investment fiduciary and custodian of all investments of the System pursuant to State law. The primary investment objective is to maximize the rate of return on the total investment portfolio, consistent with a high degree of prudence and sufficient diversity to eliminate inordinate risks and to meet the actuarial assumption for the investment rate of return. The investment activity for the year produced a total rate of return on the portfolio of 15.6 percent for the pension plan and 14.3 percent for the other postemployment benefits (OPEB) plan. For the last five years, the System has experienced an annualized rate of return of 9.4 percent for the pension plan and 8.7 percent for the OPEB plan. A summary of asset allocation and rates of return is presented in the Investment Section of this report.

INTRODUCTORY SECTION

LETTER OF TRANSMITTAL

Accounting System

Transactions of the System are reported on the accrual basis of accounting. Revenues are recorded when earned, and expenses are recorded when incurred. Participants' benefits are recorded when payable by law. We believe that the accounting and administrative internal controls established by the System provide reasonable assurance the System is carrying out its responsibilities in safeguarding its assets, in maintaining the reliability of the financial records for preparing financial statements, and in maintaining accountability for its assets.

Funding

Funds are derived from the excess of additions to plan fiduciary net position over deductions from plan fiduciary net position. Funds are accumulated by the System to meet future benefit obligations to retirees and beneficiaries. The percentage computed by dividing the actuarial value of assets by the actuarial accrued liability is referred to as the "funded ratio." This ratio provides an indication of the funding status of the System and generally, the greater this percentage, the stronger the System.

Pension - The actuarial value of the assets and actuarial accrued liability for pension benefits of the System were \$257.4 million and \$256.6 million, respectively, resulting in a funded ratio of 100.3 percent as of September 30, 2023. A historical perspective of funding levels for the Pension Plan is presented on the Schedule of Funding Progress in the Actuarial section of this report.

OPEB – Prefunding for OPEB began in fiscal year 2018. The actuarial value of the assets and actuarial accrued liability for OPEB were \$12.9 million and \$7.1 million, respectively, resulting in a funded ratio of 181.1 percent as of September 30, 2023. A historical perspective of funding levels is presented on the Schedule of Funding Progress in the Actuarial section in this report.

MAJOR GOALS ACCOMPLISHED

Agile transformation

Implementing Agile methodology transformed our information technology (IT) team culture and development at ORS. The process shift laid the foundation for our technology modernization efforts underway.

The transformation, which started in 2021 and was fully implemented by March 2024, has cultivated transparency and collaboration.

The results are new teams and processes with enhanced collaboration and engagement, with the Microsoft Azure DevOps platform as the conduit for change.

Key achievements of our Agile adoption include reduced backlogs, shorter release testing times, and stronger alignment with our objectives.

We work as one with Agency Services Supporting Retirement and the DTMB Enterprise Portfolio Management Office to craft quality products for our customers and employers and optimize solutions for our organization.

We continue to seek further ways to draw Agile thinking and approaches into our business mindset. The results are clear: a doubling of IT development work, a two-thirds reduction in emergency releases, and more effective, efficient releases, all demonstrating improved business value.

Ask Our Experts

ORS wants to keep our members informed as their trusted partner.

That is why we enhanced our ORS YouTube channel, color-coding the offerings into dedicated playlists to make matters more accessible. Those include Ask Our Experts, 1½- to 2½-minute videos on varied topics tailored to life stages and retirement plans.

INTRODUCTORY SECTION

LETTER OF TRANSMITTAL

The “Ask Our Experts” column has been offered for years in our quarterly Connections retiree newsletter, answering commonly asked questions. To better serve our customers, we created Ask Our Experts videos hosted by our retirement experts and customer service representatives.

The idea came from our Customer Education team to increase content for our social media channels, which also include Facebook, Instagram, and X. A new Ask Our Experts logo was created for the feature’s video expansion.

Since its Sept. 25, 2023, debut in the Connections newsletters and Proactive newsletter’s defined benefits (DB) edition, fifteen videos have been released. Topics include state tax changes and tax withholding updates, Medicare benefits clarification, snowbird advice, and avoiding phishing emails and spam. The series has more than 18,000 views.

Public Act 158 of 2023 – dependent eligibility

Public Act (PA) 158 of 2023 allows for a child to remain on retiree insurance until the month in which that child turns 26 years old, regardless of enrollment in post-secondary education or dependency status for tax purposes.

With PA 158 in effect Feb. 13, 2024, anyone wanting to enroll a child eligible could do so as soon as March 1, 2024, with submittal of a completed Insurance Enrollment/Change Request and required proofs on or before Feb. 29, 2024.

For requests received before Sept. 1, 2024, coverage is effective the first of the following month. For enrollments and required proofs received on or after Sept. 1, 2024, coverage starts the first of the sixth month after receipt.

PA 158 was among state laws passed to protect provisions in the federal Patient Protection and Affordable Care Act (ACA) after a challenge was filed in a north Texas federal district court.

Changes were made to all retiree healthcare plans (including dental and vision), publications, messaging, websites, forms, and social media for the Michigan Public School Employees’ Retirement System (MPSERS), State Employees’ Retirement System (SERS), State Police Retirement System (SPRS), and Judges Retirement System (JRS). In addition, Clarety and miAccount were updated; and Employee Benefits Division and MPSERS vendors were informed.

The sole required proof now is the child’s birth certificate.

SECURE Act 2.0

The federal Setting Every Community Up for Retirement Enhancement (SECURE) Act 2.0 of 2022 makes changes to qualified retirement plans and Individual Retirement Accounts (IRAs).

This includes 401(k) and governmental 457 plans like the State of Michigan 401(k) and 457 Plans (the Plans), with provisions that expand coverage, increase retirement savings, and simplify rules for retirement plans. Some initial provisions, including increases in age for required minimum distributions for participants and spousal beneficiaries, are already in effect.

In effect Dec. 29, 2022, with provisions being rolled out through 2030, the law enhances the SECURE Act of 2019.

ORS is working with Voya Financial, the Plans’ recordkeeper, to make the necessary changes to information technology systems, policies, websites, communications, and forms for affected participants in the State Employees’ and Michigan Public School Employees’ retirement systems.

As more SECURE 2.0 details emerge and different provisions are phased in and implemented, ORS is publicizing the changes through its quarterly Proactive and Connections newsletters; on its websites; and through its Facebook, Instagram, and X social media channels. ORS is also monitoring IRS guidance for the SECURE 2.0 Act as it is issued.

INTRODUCTORY SECTION

LETTER OF TRANSMITTAL

Situational self-leadership

At ORS, we recognize true growth comes from continuous evolution. Our foundation for supporting this is Blanchard Exchange's Situational Leadership II (SLII) program.

We are building to sustain the program through situational self-leadership. Staff learn and use a shared language to discuss task-level development and performance, yielding more effective conversations with supervisors.

Started in 2018, the SLII program's self-leadership focus builds the mindset and skillset of leaders. The focal points include challenging assumed constraints, goal setting, diagnosing, matching, activating points of power, and being proactive to gain the direction and support needed.

Participants achieve self-leadership individually and through one-on-ones with supervisors.

To foster better engagement, a 12-person SLII champions group guides ORS. The SLII champions meet regularly to brainstorm and collaborate on awareness, create posts on the ORS Intranet news feed, and create talking points and presentations for team meetings. The SLII champions also lead quarterly sessions for teams on topics including mastering self-leadership and the program's focal points.

Survivor option factors

The Michigan Public School Employees' Retirement Board, State of Michigan Retirement Board, Michigan State Police Retirement System Board, and Department of Technology, Management and Budget director approved new factors to calculate pensions when a survivor option is chosen.

As part of our fiduciary responsibility and fiscal best practices, an actuarial experience study is performed every five years. As part of this study, the actuary for ORS analyzed the existing survivor option factors and recommended changes to ensure the long-term health and stability of the retirement systems. The changes were implemented May 1, 2024, for MPSERS and June 1, 2024, for SERS, SPRS, and JRS.

ORS sent letters and emails to public school, state, judicial, and state police employees who submitted retirement applications. Because the survivor option was introduced for SPRS in 2006, the change did not affect many SPRS members.

The new factors apply to MPSERS members in the DB pension plan, retiring on or after May 1, 2024, regardless of their first day worked. For retiring and deferred state employees and judges, regardless of their first day worked, along with state police members who first worked on or after July 1, 2006, the new factors are used for those in the DB pension plans who retired on or after June 1, 2024.

If a member elects a survivor option at retirement, their pension is reduced throughout the retiree's lifetime. However, upon the retiree's death, the pension continues for the lifetime of the survivor pension beneficiary.

HONORS

Public Pension Standards Award

ORS was awarded the 2024 Standards Award from the Public Pension Coordinating Council Standards Program (PPCC) for both funding and administration. ORS has received these awards every year since 2004. The PPCC Standards reflect expectations for public retirement system management and administration and serve as a benchmark for all DB public plans to be measured.

INTRODUCTORY SECTION

LETTER OF TRANSMITTAL

Government Finance Officers Association Award

The Government Finance Officers Association (GFOA) of the United States and Canada awarded the retirement system with the Certificate of Achievement for Excellence in Financial Reporting for our fiscal year 2023 Annual Comprehensive Financial Report (ACFR). This marks the 33rd consecutive year ORS has received this prestigious award.

Plan Sponsor of the Year Award

The Michigan Office of Retirement Services (ORS) has been named 2024 Plan Sponsor of the Year. The recognition was announced at the Excellence in Retirement Awards, as part of the PlanSponsor National Conference, held June 4-7 in Chicago. Plan Development and Compliance Director Allison Wardlaw accepted the honor on behalf of ORS.

ACKNOWLEDGEMENTS

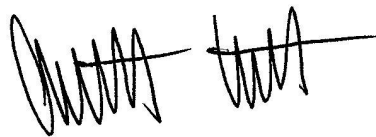
The preparation of this report was accomplished with the dedication and cooperation of many people. It is intended to provide complete and reliable information as a basis for making management decisions, as a means of determining compliance with legal provisions, and as a means for determining responsible stewardship of the funds of the System.

We would, therefore, like to express our appreciation for the assistance given by staff, the advisors, and the many people who contributed to its preparation. We believe their combined efforts have produced a report that will enable employers and plan members to better evaluate and understand the System. Their cooperation contributes significantly to the success of the System.

Sincerely,



Michelle Lange, Director
Department of Technology, Management, & Budget



Anthony J. Estell, Director
Office of Retirement Services

INTRODUCTORY SECTION

ADMINISTRATIVE ORGANIZATION

RETIREMENT BOARD MEMBERS*

As of January 30, 2025

Vacant
General Public

Ann Marie Storberg
Ex-officio Member Representing
State Treasurer

Vacant
Active State Employee

Kurt Weiss
Ex-officio Member Representing
State Personnel Director

Lauri Schmidt, Vice Chair
Retired State Employee
Term Expires Dec. 31, 2027

Lisa Geminick
Ex-officio Member Representing
Attorney General

Craig Murray
Ex-officio Member Representing
Auditor General

Judge Leo Bowman
Retired Judge
Term Expires Dec. 31, 2025

Capt. Felipe Torres
Michigan National Guard
Term Expires Dec. 31, 2026

* Statute provides that board members may continue to serve after their term expires until they are replaced or reappointed.

ADVISORS AND CONSULTANTS

As of January 30, 2025

Actuaries

Gabriel, Roeder, Smith & Co.
Mita D. Drazilov
Southfield, Michigan

Independent Auditors

Doug A. Ringler, C.P.A., C.I.A.
Auditor General
State of Michigan

Investment Manager and Custodian

Rachael Eubanks
State Treasurer
State of Michigan

Legal Advisor

Dana Nessel
Attorney General
State of Michigan

Investment Performance Measurement

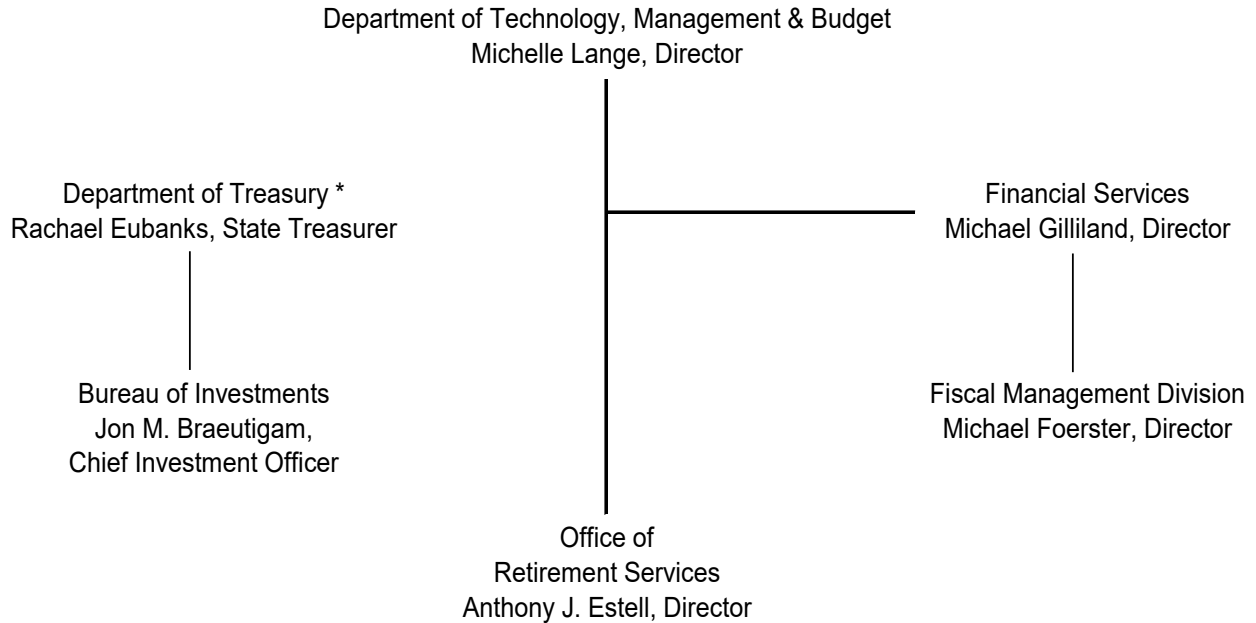
State Street Corporation
State Street Investment Analytics
Boston, MA

INTRODUCTORY SECTION

ADMINISTRATIVE ORGANIZATION

ORGANIZATION CHART

As of January 30, 2025



* The investments of the System are managed by the Michigan Department of Treasury. Information on the investments and the fiduciary, Michigan Department of Treasury, can be found in the Investment Section, Introduction. In addition, see the Investment Section, Schedule of Investment Fees (page 71) and Schedule of Investment Commissions (page 72), for information regarding the investment fees and commissions paid as well as investment professionals utilized by the System.

INTRODUCTORY SECTION

ADMINISTRATIVE ORGANIZATION

This page was intentionally left blank.

FINANCIAL SECTION

Independent Auditor's Report
Management's Discussion and Analysis
Basic Financial Statements
Notes to Basic Financial Statements
Required Supplementary Information
Note to Required Supplementary Information
Supporting Schedules



OAG

Office of the Auditor General

201 N. Washington Square, Sixth Floor • Lansing, Michigan 48913 • Phone: (517) 334-8050 • audgen.michigan.gov

Doug A. Ringler, CPA, CIA
Auditor General

Independent Auditor's Report on the Financial Statements
and Other Reporting Required by *Government Auditing Standards*

Lauri Schmidt, Acting Chair
State of Michigan Retirement Board
Stevens T. Mason Building
and
Michelle Lange, Director
Department of Technology, Management, and Budget
Elliott-Larsen Building
and
Anthony J. Estell, Director
Office of Retirement Services
Stevens T. Mason Building
Lansing, Michigan

Report on the Audit of the Financial Statements

Opinion

We have audited the financial statements of the Michigan Judges' Retirement System (System), a fiduciary component unit of the State of Michigan, as of and for the fiscal year ended September 30, 2024 and the related notes to the financial statements, which collectively comprise the System's basic financial statements as listed in the table of contents.

In our opinion, the accompanying financial statements referred to above present fairly, in all material respects, the fiduciary net position of the Michigan Judges' Retirement System as of September 30, 2024 and the changes in fiduciary net position for the fiscal year then ended in accordance with accounting principles generally accepted in the United States of America.

Basis for Opinion

We conducted our audit in accordance with auditing standards generally accepted in the United States of America (GAAS) and the standards applicable to financial audits contained in *Government Auditing Standards* issued by the Comptroller General of the United States. Our responsibilities under those standards are further described in the Auditor's Responsibilities for the Audit of the Financial Statements section of our report. We are required to be independent of the System and to meet our other ethical responsibilities in accordance with the relevant ethical requirements relating to our audit. We believe that the audit evidence we have obtained is sufficient and appropriate to provide a basis for our audit opinion.

Responsibilities of Management for the Financial Statements

Management is responsible for the preparation and fair presentation of the financial statements in accordance with accounting principles generally accepted in the United States of America and for the design, implementation, and maintenance of internal control relevant to the preparation and fair presentation of financial statements that are free from material misstatement, whether due to fraud or error.

In preparing the financial statements, management is required to evaluate whether there are conditions or events, considered in the aggregate, that raise substantial doubt about the System's ability to continue as a going concern for the twelve months beyond the financial statement date, including any currently known information that may raise substantial doubt shortly thereafter.



OAG

Office of the Auditor General

Doug A. Ringler, CPA, CIA
Auditor General

Lauri Schmidt, Acting Chair
Michelle Lange, Director
Anthony J. Estell, Director
Page 2

Auditor's Responsibilities for the Audit of the Financial Statements

Our objectives are to obtain reasonable assurance about whether the financial statements as a whole are free from material misstatement, whether due to fraud or error, and to issue an auditor's report that includes our opinion. Reasonable assurance is a high level of assurance but is not absolute assurance and, therefore, is not a guarantee that an audit conducted in accordance with GAAS and *Government Auditing Standards* will always detect a material misstatement when it exists. The risk of not detecting a material misstatement resulting from fraud is higher than for one resulting from error, as fraud may involve collusion, forgery, intentional omissions, misrepresentations, or the override of internal control. Misstatements are considered material if there is a substantial likelihood that, individually or in the aggregate, they would influence the judgment made by a reasonable user based on the financial statements.

In performing an audit in accordance with GAAS and *Government Auditing Standards*, we:

- Exercise professional judgment and maintain professional skepticism throughout the audit.
- Identify and assess the risks of material misstatement of the financial statements, whether due to fraud or error, and design and perform audit procedures responsive to those risks. Such procedures include examining, on a test basis, evidence regarding the amounts and disclosures in the financial statements.
- Obtain an understanding of internal control relevant to the audit in order to design audit procedures that are appropriate in the circumstances, but not for the purpose of expressing an opinion on the effectiveness of the System's internal control. Accordingly, no such opinion is expressed.
- Evaluate the appropriateness of accounting policies used and the reasonableness of significant accounting estimates made by management, as well as evaluate the overall presentation of the financial statements.
- Conclude whether, in our judgment, there are conditions or events, considered in the aggregate, that raise substantial doubt about the System's ability to continue as a going concern for a reasonable period of time.

We are required to communicate with those charged with governance regarding, among other matters, the planned scope and timing of the audit, significant audit findings, and certain internal control-related matters that we identified during the audit.

Required Supplementary Information

Accounting principles generally accepted in the United States of America require that the management's discussion and analysis, schedule of changes in net pension liability, schedule of changes in net OPEB liability, schedules of contributions, schedules of investment returns, and related note, as listed in the table of contents, be presented to supplement the basic financial statements. Such information is the responsibility of management and, although not a part of the basic financial statements, is required by the Governmental Accounting Standards Board who considers it to be an essential part of financial reporting for placing the basic financial statements in an appropriate operational, economic, or historical context. We have applied certain limited procedures to the required supplementary information in accordance with auditing standards generally accepted in the United States of America, which consisted of inquiries of management about the methods of preparing the information and comparing the information for consistency with management's responses to our inquiries, the basic financial statements, and other knowledge we obtained during our audit of the basic financial statements. We do not express an opinion or provide any assurance on the information because the limited procedures do not provide us with sufficient evidence to express an opinion or provide any assurance.



OAG

Office of the Auditor General

Doug A. Ringler, CPA, CIA
Auditor General

Lauri Schmidt, Acting Chair
Michelle Lange, Director
Anthony J. Estell, Director
Page 3

Supplementary Information

Our audit was conducted for the purpose of forming an opinion on the financial statements that collectively comprise the System's basic financial statements. The supporting schedules, as listed in the table of contents, are presented for purposes of additional analysis and are not a required part of the basic financial statements. Such information is the responsibility of management and was derived from and relates directly to the underlying accounting and other records used to prepare the basic financial statements. The information has been subjected to the auditing procedures applied in the audit of the basic financial statements and certain additional procedures, including comparing and reconciling such information directly to the underlying accounting and other records used to prepare the basic financial statements or to the basic financial statements themselves, and other additional procedures in accordance with auditing standards generally accepted in the United States of America. In our opinion, the supporting schedules are fairly stated, in all material respects, in relation to the basic financial statements as a whole.

Other Information

Management is responsible for the other information included in the annual report. The other information comprises the introductory, investment, actuarial, and statistical sections and acknowledgments, as listed in the table of contents, but does not include the basic financial statements and our auditor's report thereon. Our opinion on the basic financial statements does not cover the other information, and we do not express an opinion or any form of assurance thereon.

In connection with our audit of the basic financial statements, our responsibility is to read the other information and consider whether a material inconsistency exists between the other information and the basic financial statements, or the other information otherwise appears to be materially misstated. If, based on the work performed, we conclude that an uncorrected material misstatement of the other information exists, we are required to describe it in our report.

Other Reporting Required by Government Auditing Standards

In accordance with *Government Auditing Standards*, we will also issue a report dated January 30, 2025 on our consideration of the System's internal control over financial reporting and on our tests of its compliance with certain provisions of laws, regulations, contracts, and grant agreements and other matters. The purpose of that report is solely to describe the scope of our testing of internal control over financial reporting and compliance and the results of that testing, and not to provide an opinion on the effectiveness of the System's internal control over financial reporting or on compliance. That report is an integral part of an audit performed in accordance with *Government Auditing Standards* in considering the System's internal control over financial reporting and compliance.

Doug Ringler
Auditor General
January 30, 2025

FINANCIAL SECTION

MANAGEMENT'S DISCUSSION AND ANALYSIS

Our discussion and analysis of the Michigan Judges' Retirement System's (System) financial performance provides an overview of the System's financial activities for the fiscal year ended September 30, 2024. Please read it in conjunction with the transmittal letter in the Introductory Section on page 4 and the basic financial statements, which follow this discussion.

FINANCIAL HIGHLIGHTS

- System assets exceeded liabilities at the close of fiscal year 2024 by \$290.0 million (reported as *Net Position Restricted for Pension Benefits and OPEB*). Fiduciary net position is restricted to meet future benefit payments.
- Additions for the year were \$42.3 million, which are comprised primarily of member contributions of \$0.3 million, employer contributions of \$1.0 million, and net investment income of \$40.7 million.
- Deductions for the year were \$26.6 million, which are comprised primarily of retirement benefits of \$24.8 million, refunds of contributions of \$1.1 million, and administrative and other expenses of \$0.4 million.

THE STATEMENT OF PLAN FIDUCIARY NET POSITION AND THE STATEMENT OF CHANGES IN PLAN FIDUCIARY NET POSITION

This Annual Comprehensive Financial Report (ACFR) consists of two financial statements; The *Statement of Pension Plan and Other Postemployment Benefit Plan Fiduciary Net Position* (page 20) and The *Statement of Changes in Pension Plan and Other Postemployment Benefit Plan Fiduciary Net Position* (page 21). These financial statements report information about the System, as a whole, and about its financial condition that should help answer the question: Is the System, as a whole, better off or worse off as a result of this year's activities? These statements include all assets and liabilities using the economic resources measurement focus and the accrual basis of accounting, all revenues and expenses are taken into account regardless of when cash is received or paid.

The *Statement of Pension Plan and Other Postemployment Benefit Plan Fiduciary Net Position* presents all of the System's assets and liabilities, with the difference between the two reported as fiduciary net position. Over time, increases and decreases in fiduciary net position measure whether the System's financial position is improving or deteriorating. The *Statement of Changes in Pension Plan and Other Postemployment Benefit Plan Fiduciary Net Position* presents how the System's fiduciary net position changed during the most recent fiscal year. These two financial statements should be reviewed along with the Schedule of Changes in Net Pension Liability (page 46), the Schedule of Changes in Net OPEB Liability (page 48), and Schedules of Contributions (page 50) to determine whether the System is becoming financially stronger or weaker.

FINANCIAL ANALYSIS

System total assets as of September 30, 2024, were \$303.9 million and were mostly comprised of investments and securities lending collateral. Total assets increased \$20.1 million or 7.1% between fiscal years 2023 and 2024 due primarily to increases in investments and securities lending collateral.

Total liabilities as of September 30, 2024, were \$13.9 million and were comprised of unearned revenue, accounts payable and obligations under securities lending. Total liabilities increased \$4.4 million or 45.9% between fiscal years 2023 and 2024 due primarily to an increase in obligations under securities lending.

System assets exceeded its liabilities at the close of fiscal year 2024 by \$290.0 million. Total net position restricted for pension and OPEB increased \$15.7 million or 5.7% between fiscal years 2023 and 2024 due primarily to an increase in investments and securities lending collateral.

FINANCIAL SECTION

MANAGEMENT'S DISCUSSION AND ANALYSIS

PLAN FIDUCIARY NET POSITION

(in thousands)

	2024	2023	Increase (Decrease)
Assets			
Equity in common cash	\$ 7,040	\$ 7,614	(7.5) %
Receivables	215	116	84.6
Investments	282,768	266,572	6.1
Securities lending collateral	13,870	9,494	46.1
Total assets	303,893	283,797	7.1
Liabilities			
Unearned revenue	9	14	(39.9)
Accounts payable and other accrued liabilities	39	33	20.0
Obligations under securities lending	13,870	9,494	46.1
Total liabilities	13,918	9,541	45.9
Net Position Restricted for Pension Benefits and OPEB	\$ 289,975	\$ 274,256	5.7 %

ADDITIONS TO PLAN FIDUCIARY NET POSITION

The reserves needed to finance pension and other postemployment benefits are accumulated through the collection of member contributions, employer contributions, and earnings on investments. Contributions and net investment income for fiscal year 2024 totaled \$42.3 million.

Total additions for fiscal year 2024 increased approximately \$18.4 million or 77.1% from those of fiscal year 2023 due to increased net investment income. Total employer contributions decreased between fiscal years 2023 and 2024 by \$0.3 million or 21.1%, while net investment income increased \$18.7 million or 84.9%. The Investment Section of this report reviews the results of investment activity for fiscal year 2024.

DEDUCTIONS FROM PLAN FIDUCIARY NET POSITION

The primary deductions of the System include the payment of pension benefits to members and beneficiaries; payment for health, dental and vision benefits; and the cost of administering the System. Retirement benefits, health benefits, and administrative and other expenses for fiscal year 2024 were \$26.6 million.

Total deductions for fiscal year 2024 increased \$1.2 million or 4.8% from fiscal year 2023. Payments for health care benefits for members and beneficiaries increased during the year by \$0.1 million or 73.6%. Health care benefits increased due to an increase in Optum Rx claims costs for fiscal year 2024. The payment of pension benefits increased by \$39.1 thousand or 0.2% between fiscal years 2023 and 2024.

FINANCIAL SECTION

MANAGEMENT'S DISCUSSION AND ANALYSIS

CHANGES IN PLAN FIDUCIARY NET POSITION

(in thousands)

	2024	2023	Increase (Decrease)
Additions			
Member contributions	\$ 327	\$ 369	(11.4) %
Employer contributions	1,005	1,274	(21.1)
Other governmental contributions	245	180	36.2
Net investment income (loss)	40,741	22,028	84.9
Other non-operating revenue	-	42	(100.0)
Miscellaneous	14	5	184.9
Total additions	42,332	23,899	77.1
Deductions			
Pension benefits	24,835	24,796	0.2
Health care benefits	290	167	73.6
Dental/vision benefits	-	7	(100.0)
Refunds of contributions	1,084	-	N/A
Administrative and other expenses	404	426	(5.1)
Total deductions	26,614	25,396	4.8
Net Increase (Decrease) in Net Position	15,719	(1,497)	1,149.8
Net Position Restricted for Pension Benefits and OPEB:			
Beginning of Year	274,256	275,753	(0.5)
End of Year	\$ 289,975	\$ 274,256	5.7 %

RETIREMENT SYSTEM AS A WHOLE

The System's overall Fiduciary Net Position experienced an increase in fiscal year 2024 of \$15.7 million. The System's rate of return for the Pension Plan's investments increased by an overall 7.4% from an 8.2% return in fiscal year 2023, to a 15.6% return during fiscal year 2024. The System's rate of return for the OPEB Plan's investments increased by an overall 7.0% from a 7.3% return in fiscal year 2023, to a 14.3% return during fiscal year 2024. Management believes that the System remains financially sound and positioned to meet its ongoing benefit obligations due, in part, to a prudent investment program, cost controls and strategic planning.

CONTACTING SYSTEM FINANCIAL MANAGEMENT

This financial report is designed to provide the Retirement Board, our membership, taxpayers, investors, and creditors with a general overview of the System's finances and to demonstrate the System's accountability for the money it receives. If you have any questions about this report or need additional financial information, contact the Office of Retirement Services by phone at 1-800-381-5111, or visit the website at www.michigan.gov/ors/contact-ors.

FINANCIAL SECTION

BASIC FINANCIAL STATEMENTS

STATEMENT OF PENSION PLAN AND OTHER POSTEMPLOYMENT BENEFIT PLAN FIDUCIARY NET POSITION

As of September 30, 2024
(in thousands)

	Pension Plan	OPEB Plan	Total
Assets:			
Equity in common cash	\$ 3,600	\$ 3,440	\$ 7,040
Receivables:			
Amounts due from members	1	-	1
Amounts due from employers	15	-	15
Amounts due from federal agencies - current	-	50	50
Amounts due from federal agencies - non-current	-	93	93
Amounts due from other	-	54	54
Interest and dividends	2	-	2
Total receivables	19	196	215
Investments:			
Short-term investment pools	9,894	738	10,632
Fixed income pools	52,642	2,672	55,314
Domestic equity pools	54,782	2,225	57,006
Real estate and infrastructure pools	20,320	485	20,805
Private equity pools	54,230	2,124	56,354
International equity pools	35,215	1,233	36,448
Absolute return pools	23,178	628	23,806
Real return and opportunistic pools	21,835	568	22,403
Total investments	272,096	10,672	282,768
Securities lending collateral	13,228	642	13,870
Total assets	288,943	14,950	303,893
Liabilities:			
Unearned revenue	-	9	9
Accounts payable and other accrued liabilities	4	35	39
Obligations under securities lending	13,228	642	13,870
Total liabilities	13,233	685	13,918
Net Position Restricted for Pension Benefits and OPEB:	\$ 275,710	\$ 14,265	\$ 289,975

The accompanying notes are an integral part of these financial statements.

FINANCIAL SECTION

BASIC FINANCIAL STATEMENTS

STATEMENT OF CHANGES IN PENSION PLAN AND OTHER POSTEMPLOYMENT BENEFIT PLAN FIDUCIARY NET POSITION

For Fiscal Year Ended September 30, 2024
(in thousands)

	Pension Plan	OPEB Plan	Total
Additions:			
Contributions:			
Member contributions	\$ 222	\$ 105	\$ 327
Employer contributions	1,005	-	1,005
Other governmental contributions	-	245	245
Total contributions	1,227	350	1,577
Investment income (loss):			
Net increase (decrease) in fair value of investments	33,848	1,526	35,375
Interest, dividends, and other	6,110	340	6,450
Investment expenses:			
Other investment expenses	(1,066)	(51)	(1,117)
Securities lending activities:			
Securities lending income	748	36	784
Securities lending expenses	(716)	(35)	(751)
Net investment income (loss)	38,924	1,817	40,741
Miscellaneous income	-	14	14
Total additions	40,152	2,180	42,332
Deductions:			
Benefits paid to plan members and beneficiaries:			
Retirement benefits	24,835	-	24,835
Health benefits	-	290	290
Refunds of contributions	1,083	1	1,084
Administrative and other expenses	329	76	404
Total deductions	26,247	367	26,614
Net Increase (Decrease) in Net Position	13,905	1,814	15,719
Net Position Restricted for Pension Benefits and OPEB:			
Beginning of Year	261,805	12,451	274,256
End of Year	\$ 275,710	\$ 14,265	\$ 289,975

The accompanying notes are an integral part of these financial statements.

FINANCIAL SECTION

NOTES TO BASIC FINANCIAL STATEMENTS

NOTE 1 – PLAN DESCRIPTION

ORGANIZATION

The Michigan Judges' Retirement System (System) is a single-employer, state-wide, defined benefit public employee retirement plan and fiduciary component unit of the State of Michigan (State), created under Public Act 234 of 1992, which consolidated the former Judges' and Probate Judges' Retirement Systems into one retirement system. Section 204 of this Act establishes the board's authority to promulgate or amend the provisions of the System. Executive Order 2015-13 signed by the Governor on October 27, 2015 established the State of Michigan Retirement Board. The executive order establishes the board's authority to promulgate or amend the provision of the System. The board consists of nine members:

- The Attorney General
- The State Treasurer
- The Legislative Auditor General
- The State Personnel Director
- One member or retirant of the State Employees' Retirement System appointed by the Governor
- One member or retirant of the Judges' Retirement System appointed by the Governor
- One current or former officer or enlisted person in the Michigan military establishment who is a member or retirant under the Military Retirement Provisions appointed by the Governor
- One retirant member of the State Employees' Retirement System appointed by the Governor
- One member of the general public appointed by the Governor

The System's pension plan was established to provide retirement, survivor and disability benefits to judges in the judicial branch of state government. In addition, the System's OPEB plan provides all retirees with the option of receiving health, dental, and vision coverage under the Michigan Judges' Retirement Act. There are 23 participating courts. The System also includes the Governor of the State of Michigan, Lieutenant Governor, Secretary of State, Attorney General, Legislative Auditor General, and the Constitutional Court Administrator if elected prior to March 31, 1997. Officials elected on or after March 31, 1997, are part of the Defined Contribution Retirement Plan. The System is a qualified pension trust fund under section 401(a) of the Internal Revenue Code.

The System is a fiduciary component unit of the State and its financial statements are included as a pension (and other employee benefit) trust fund in the State of Michigan Annual Comprehensive Financial Report.

The System is administered by the Office of Retirement Services within the Michigan Department of Technology, Management & Budget (DTMB). The Department Director appoints the Office Director, with whom the general oversight of the System resides. The State of Michigan Investment Board serves as the investment fiduciary and custodian for the System.

MEMBERSHIP

At September 30, 2024, the System's pension plan membership consisted of the following:

Inactive plan members or their beneficiaries currently receiving benefits:	
Regular benefits	351
Survivor benefits	150
Disability benefits	5
Total	506
Inactive plan members entitled to but not yet receiving benefits:	-
Active plan members:	
Vested	26
Non-vested	-
Total	26
Total plan members	532

FINANCIAL SECTION

NOTES TO BASIC FINANCIAL STATEMENTS

Plan 1 or 2 members (Supreme Court Justice, Court of Appeals, or elected officials) may enroll in the State Health Plan when they retire, and their health premium rate is subsidized. All other members may enroll in the State Health Plan if they wish to, but they must pay the entire premium cost. The number of participants is as follows:

Subsidized OPEB Plan

Participants eligible for subsidized benefits:

Retirees and Survivors	43
Inactive vested members	24
Active members	37

Participants receiving subsidized benefits:

Health	43
--------	----

Expenses for the year (in thousands)	\$ 366.5
Employer payroll contribution rate	0.0 %

FINANCIAL SECTION

NOTES TO BASIC FINANCIAL STATEMENTS

BENEFIT PROVISIONS - PENSION

Introduction

Benefit provisions of the defined benefit pension plan are established by State statute, which may be amended. Public Act 234 of 1992, Michigan Judges' Retirement Act, as amended, establishes eligibility and benefit provisions for the defined benefit pension plan. Retirement benefits are determined by final compensation and years of service. Members are eligible to receive a monthly benefit when they meet certain age and service requirements. The System also provides disability and survivor benefits.

A member who leaves judicial service may request a refund of his or her member contribution account. A refund cancels a former member's rights to future benefits. Returning members who previously received a refund of their contributions may reinstate their service credit through repayment of the refund upon satisfaction of certain requirements. For salary, contribution and calculation of retirement benefit, the membership of the System is categorized into seven plans. The categories are based on the position to which the member was elected or appointed. Public Act 523 of 1996, effective March 31, 1997, closed the plan to new entrants. Judges or State officials newly appointed or elected on or after March 31, 1997 become members of the defined contribution plan.

Regular Retirement

The retirement benefit or allowance is calculated in accordance with the formula of the plan, which applies to the member. The formula is based on a member's years of credited service (employment) and final compensation. The normal retirement benefit is payable monthly over the lifetime of a member.

A member may retire and receive a monthly benefit after attaining:

- age 60 with 8 or more years of credited service; or
- age 55 with 18 or more years of credited service (the last 6 years continuous); or
- 25 or more years of service, the last 6 years continuous; no age requirement; or
- age 60 with service of two full terms in the office of Governor, Lieutenant Governor, Secretary of State, or Attorney General, or one full term in the office of Legislative Auditor General

Early Retirement

A member may retire early with a permanently reduced pension:

- after completing at least 12 but less than 18 years of service, of which the last 6 years are continuous; and
- after attaining age 55.

The early pension is computed in the same manner as a regular pension but is permanently reduced 0.5% for each full and partial month between the pension effective date and the date the member will attain age 60.

Deferred Retirement

A member with 8 or more years of credited service who terminates judicial service before meeting the age requirements to receive a retirement allowance and who does not withdraw his or her contributions, is entitled to receive a monthly allowance upon reaching age 60 or age 55 with 18 years of service, the last 6 of which were continuous.

Disability Benefit

A member with 8 or more years of credited service who is totally disabled from physically or mentally performing his or her duties is eligible for a disability pension. The disability benefit is computed in the same manner as an age and service allowance based upon service and final salary at the time of disability.

Pension Payment Options

A pension is payable monthly for the lifetime of a System retiree and equals 3% of final salary times years of service for up to 12 years of service; or 50% of salary with 12 years, increased 2.5% for each additional year up to a maximum of 60% of salary. A former retiree of the Probate Judges' Retirement System receives 3% of salary times years of service, to a maximum of the greater of 40% of salary or \$15,000 but not to exceed 66 2/3% of final salary when added to a county pension; or 3.5% of salary times years of service with a maximum of two thirds of final salary, if elected.

FINANCIAL SECTION

NOTES TO BASIC FINANCIAL STATEMENTS

Straight Life

This option provides the highest monthly retirement allowance. Surviving spouse receives a 50% survivor's benefit.

Option A

Under this option, after the retiree's death, the beneficiary will receive 100% of the pension for the remainder of the beneficiary's lifetime. If this option is elected, the normal retirement benefit is reduced by a factor based upon the ages of the retiree and of the beneficiary.

Option B

Under this option, after the retiree's death, the beneficiary will receive 50% of the pension for the remainder of the beneficiary's lifetime. If this option is elected, the normal retirement benefit is reduced by a factor based upon the ages of the retiree and of the beneficiary. The reduction factor is smaller than the factor used in Option A above.

Survivor Benefit

A survivor benefit may be paid if 1) a member who has 8 or more years of credited service dies while in office, 2) a vested former member dies before retirement, or 3) a retiree dies following retirement.

Contributions

Member Contributions

Members currently participate on a contributory basis. For contribution purposes, the membership of the System is categorized in seven plans, which are based on the position to which the member was elected or appointed.

Under certain circumstances, members may contribute to the System for the purchase of creditable service, such as military service or other public service. If a member terminates covered employment before a retirement benefit is payable, the member's contribution and interest on deposit may be refunded. If the member dies before being vested, the member's contribution and interest are refunded to the designated beneficiaries.

Publicly Financed Contributions

There are two public sources which fund retirement benefits: Court fees and State appropriations. The State contributes annually the greater of 3.5% of the aggregate annual compensation of State-paid base salaries, or the difference between the total actuarial requirement of current service and unfunded accrued liabilities minus the revenues from court filing fees and member contributions. If the court fees deposited in the reserve for employer contributions equal the amount needed in addition to other publicly financed contributions to sustain the required level of publicly financed contributions, Section 304(4) of Judges' Retirement Act requires court fees be deposited in the court fee fund. A chart showing the publicly financed contribution rates is included in Note 3.

Public Act 95 of 2002 authorizes the State Treasurer, if funds remain in the court fee fund after transfers, to transmit a portion of the money in the court fee fund and any earnings on those amounts to the reserve for health benefits. The purpose of this transfer is to pay expected health care costs for the subsequent fiscal year that are not covered as a result of employee contributions. For fiscal year 2024, this amount was \$0.

BENEFIT PROVISIONS – OTHER POSTEMPLOYMENT

Benefit provisions of the other postemployment benefit (OPEB) plan are established by State statute, which may be amended. Public Act 234 of 1992, as amended, establishes eligibility and benefit provisions for the OPEB plan. Members are eligible to receive health, prescription drug, dental, and vision coverage on the first day they start receiving pension benefits. There is no provision for ad hoc or automatic increases. The Judges' Retirement Act requires joint authorization by DTMB and the Civil Service Commission to make changes to retiree medical benefit plans.

Under the Michigan Judges' Retirement Act, Plan 1 or 2 members may enroll in the State Health Plan when they retire. If a Plan 1 or 2 benefit recipient is a former member of the defined benefit pension plan, then eighty percent of the health insurance premium is paid by the System until age 65, at which time Medicare provides primary health insurance coverage and is fully paid by the System.

FINANCIAL SECTION

NOTES TO BASIC FINANCIAL STATEMENTS

Plan 1 and 2 benefit recipients that are former qualified participants in the defined contribution plan and were never members of the defined benefit pension plan, receive a graded health insurance premium subsidy paid by the System. The graded premium subsidy is based upon Medicare eligibility and years of service. For those that are not Medicare eligible the premium subsidy is a percentage of the maximum 80% pre-Medicare premium subsidy. For those that are Medicare eligible, it is a percentage of the maximum 100% Medicare premium subsidy. The following State paid graded premium subsidy applies:

- 4 years of service: 50% of the applicable subsidy (80% non-Medicare, 100% Medicare)
- 5 years of service: 75% of the applicable subsidy (80% non-Medicare, 100% Medicare)
- 6 or more years of service: 90% of the applicable subsidy (80% non-Medicare, 100% Medicare)

All other members may enroll in the State Health Plan during an open enrollment period. The total premium is paid by the member. The active employee payroll contribution rate to fund health benefits for the Plan 1 or 2 members was 2.0% for fiscal year 2024. The employer contributes to fund health benefits based upon the results of the annual System retiree healthcare actuarial valuation.

All retirees may enroll in the state dental and/or vision plan during an open enrollment period. The total premium is paid by the member.

NOTE 2 – SUMMARY OF SIGNIFICANT ACCOUNTING POLICIES

BASIS OF ACCOUNTING AND PRESENTATION

The System is a fiduciary component unit of the State and as such, is included in the pension (and other employee benefit) trust fund financial statements in the State's Annual Comprehensive Financial Report. Court filing fees are recognized as revenue in the period received since amount of court fee revenue is unknown. Contributions from the State are recognized as revenue when due and payable. Benefits and refunds are recognized when due and payable in accordance with the terms of the System.

Governmental Accounting Standards Board (GASB) Statement No. 67, *Financial Reporting for Pension Plans*, as amended, and Statement No. 74, *Financial Reporting for Postemployment Benefit Plans Other Than Pension Plans*, as amended, which were adopted during the year ended September 30, 2014 and 2017, addresses accounting and financial reporting requirements for pension and other postemployment benefit plans, respectively. The requirements for both GASB Statement No. 67 and 74 require changes in presentation of the financial statements, notes to the financial statements, and required supplementary information. Significant changes include an actuarial calculation of the total and net pension and other postemployment benefit liabilities. It also includes comprehensive note disclosures regarding the pension and other postemployment benefit liability, the sensitivity of the net pension and other postemployment benefit liability to the discount rate, and increased investment activity disclosures. The implementation of GASB Statement No. 67 and 74 did not significantly impact the accounting for accounts receivable and investment balances. The total pension and other postemployment benefit liability, determined in accordance with GASB Statement No. 67 and 74, is presented in Note 4 on page 29, Note 5 on page 33, and in the Required Supplementary Information beginning on page 46.

As of September 30, 2016, the System applies GASB Statement No. 72, *Fair Value Measurement and Application*, as amended. GASB Statement No. 72 provides guidance for determining a fair value measurement for reporting purposes and applying fair value to certain investments and disclosures related to all fair value measurements.

RESERVES

Public Act 234 of 1992, as amended, created several reserves. The reserves are described below and details are provided in the supporting schedules.

Reserve for Employee Contributions

This reserve represents active member contributions, payments for the purchase of service credit, repayment of previously refunded contributions and interest less amounts transferred to the Reserve for Retirement Benefit Payments for regular and disability retirement, amounts refunded to terminated members, and transferring inactive reserves. At September 30, 2024, the balance in this reserve was \$18.2 million.

FINANCIAL SECTION

NOTES TO BASIC FINANCIAL STATEMENTS

Reserve for Employer Contributions

This reserve represents court fees, late fees, interest payments, employer contributions, and State appropriations. Amounts are transferred annually from this reserve to the Reserve for Retired Benefit Payments to fund that reserve. At September 30, 2024, the balance in this reserve was \$41.4 million.

Reserve for Retired Benefit Payments

This reserve represents the reserves for payment of future retirement benefits to current retirees. At retirement, a member's accumulated contributions plus interest are transferred into this reserve from the Reserve for Employee Contributions and the Reserve for Employer Contributions. Monthly benefits, which are paid to the retiree, reduce the reserve. At the end of each fiscal year, an amount is transferred from the Reserve for Employer Contributions to bring the reserve into balance with the actuarial present value of retirement allowances. At September 30, 2024, the balance in this reserve was \$223.4 million.

Reserve for Undistributed Investment Income

This reserve is credited with investment earnings, gifts to the System, and forfeited contributions. All administrative expenses are paid from this reserve and interest is transferred annually to the other reserves. At September 30, 2024, the balance in this reserve was \$(7.3) million.

Reserve for Health (OPEB) Related Benefits

This reserve is credited with OPEB investment earnings and member contributions for retirees' health, dental, and vision benefits. Starting in fiscal year 2018, the employer contributions is based on a prefunded basis and represents a level of funding that, if paid on an ongoing basis, is projected to cover normal cost each year and amortize any unfunded actuarial liability (or funding excess) over a period not to exceed thirty years. The actual annual contributions have, in some years, been less than the actuarially determined contribution (ADC). In addition, in fiscal year 2024, this reserve includes revenue from the federal government for the Employee Group Waiver Plan (EGWP). Premiums for health, dental and vision benefits are paid from this reserve. At September 30, 2024, the balance in this reserve was \$14.3 million.

REPORTING ENTITY

The System is a fiduciary component unit of the State of Michigan. As such, the System financial statements are included as a pension (and other employee benefit) trust fund in the State of Michigan Annual Comprehensive Financial Report. The System and its Board are not financially accountable for any other entities or other organizations. Accordingly, the System is the only entity included in this financial report.

BENEFIT PROTECTION

Public Act 100 of 2002 was passed by the Michigan Legislature to protect pension benefits of public employees from alienation (being transferred). Alienation is attachment, garnishment, levy, execution, bankruptcy or other legal process except for divorce orders or eligible domestic relation orders. The statutes governing the System contained an "anti-alienation" clause to provide for this protection; however, many smaller public pension systems did not have the benefit of this protection. Therefore, Public Act 100 of 2002 was passed to establish legal protection of pension assets that encompasses all public employees.

INVESTMENTS

Generally, investments are reported at fair value, consistent with the provisions of GASB Statement No. 72. Short-term, highly liquid debt instruments including commercial paper are reported at amortized cost. Additional disclosures describing investments are provided in Note 6 on page 36.

INVESTMENT INCOME

Dividend and interest income is recognized on the accrual basis. Fair value changes are recorded as investment income or loss. Purchases and sales of investments are recorded as of the trade date (the date upon which the transaction is initiated), except for purchase and sale of mortgages, real estate, and private equity investments which are recorded as of the settlement date (the date upon which the transaction is ultimately completed). The effect of recording such transactions as of the settlement date does not materially affect the financial statements.

FINANCIAL SECTION

NOTES TO BASIC FINANCIAL STATEMENTS

COSTS OF ADMINISTERING THE SYSTEM

Each year a restricted general fund appropriation is requested to fund the ongoing business operations of the System. These administrative costs are ultimately funded by the System through the regular transfer of funds from the System to the State's general fund based on either a direct cost or allocation basis depending on the nature of the expense. Costs of administering the System are financed by undistributed investment income of the System.

PROPERTY AND EQUIPMENT

Office space is leased from the State on a year-to-year basis. Office equipment is capitalized if the value exceeds \$5,000. These assets are recorded at cost and are reported net of depreciation in the *Statement of Pension Plan and Other Postemployment Benefit Plan Fiduciary Net Position*. Such assets are depreciated on a straight-line basis over 10 years. The System does not have equipment that falls within these parameters.

RELATED PARTY TRANSACTIONS

Leases and Services

The System leases operating space and purchases certain administrative, data processing, legal and investment services from the State. The space and services are not otherwise available by competitive bid. The schedule below summarizes costs incurred by the System for such services.

	2024
Building Rentals	\$ 1,371
Technological Support	19,423
Attorney General	5,407
Investment Services	49,623
Personnel Services	202,640

Cash

At September 30, 2024, the System had \$7.0 million in a common cash investment pool maintained for various State operating funds. The participating funds in the common cash pool earn interest at various rates depending upon prevailing short-term interest rates. Earnings (Losses) from these activities amounted to \$120,052 for the year ended September 30, 2024.

EXCESS BENEFITS

Internal Revenue Service (IRS) Code Section 415 requires that, for individuals who receive retirement benefits in excess of established limits, these benefits are recorded and reported outside of the pension plan in order to keep the qualified status of the plan. This includes coordination of benefit issues whereby a retiree participates in more than one qualified plan. In fiscal year 2024, the System provided excess benefits to one retiree.

NOTE 3 – CONTRIBUTIONS

Members' contributions range from 3.5% to 7% of their salary depending on the plan (described in statute). Contributions are tax deferred under Section 414(h)(2) of the Internal Revenue Code, except for probate judges whose contributions are tax deferred only if the local unit of government has adopted a resolution to do so. Contribution provisions are specified by State statute and may be amended only by action of the State Legislature.

The State contributes annually the greater of 3.5% of the aggregate annual compensation of State paid base salaries, or the difference between the total actuarial requirement of current service and unfunded actuarial liabilities minus the revenues from court filing fees and member contributions. Although contributions are expressed as a percentage of payroll, because the system is a closed plan, the actuarial valuation calculates a level dollar amount for funding purposes. For fiscal year 2024, an employer contribution in the amount of \$1.0 million was paid from the court fee fund. If the court fees deposited in the reserve for employer contributions equal the amount needed in addition to other publicly financed contributions to sustain the required level of publicly financed contributions, Section 304(4) requires court fees to be deposited in the court fee fund in the State Treasury. The State Treasurer transmits the money in the court fee fund, not exceeding \$2.2 million in any fiscal year, to the court equity fund for operational expenses of trial courts.

Employer contributions to the System are determined on an actuarial basis using the entry-age normal actuarial cost method. Under this method, the actuarial present value of the projected benefits of each individual included in

FINANCIAL SECTION

NOTES TO BASIC FINANCIAL STATEMENTS

the actuarial valuation is allocated on a level basis over the service of the individual between entry-age and assumed exit age. The normal cost is the annual cost assigned, under the actuarial funding method, to the current and subsequent plan years. The remainder is called the actuarial accrued liability. Normal cost is funded on a current basis.

Pension and OPEB contributions made in the fiscal year ending September 30, 2024, were determined as of the September 30, 2023 actuarial valuations. The pension and OPEB unfunded (overfunded) actuarial accrued liabilities (UAAL) as of September 30, 2023, are amortized over a 13-year period beginning October 1, 2023 and ending September 30, 2036.

The schedules below summarize pension and OPEB contribution rates in effect for fiscal year 2024.

Pension Contribution Rates

Benefit Structure	Member	Employer*
Supreme Court	5.0 %	- %
Court of Appeals	5.0	-
Elected Officials	5.0	-
Circuit Court	3.5 - 7.0	-
District Court	3.5 - 7.0	-
Probate Court	3.5 - 7.0	-

* Employer Contributions are paid through court fees.

OPEB Contribution Rates

Benefit Structure	Member	Employer*
Supreme Court	2.0 %	- %
Court of Appeals	2.0	-
Elected Officials	2.0	-
Circuit Court	-	-
District Court	-	-
Probate Court	-	-

* Employer Contributions are paid through court fees.

NOTE 4 – NET PENSION LIABILITY

MEASUREMENT OF THE NET PENSION LIABILITY

The net pension liability is to be measured as the total pension liability, less the amount of the pension plan's fiduciary net position. In actuarial terms, this will be the accrued liability less the fair value of assets (not the smoothed actuarial value of assets that is often encountered in actuarial valuations performed to determine the employer's contribution requirement).

FINANCIAL SECTION

NOTES TO BASIC FINANCIAL STATEMENTS

Net Pension Liability

(in thousands)

Total Pension Liability	\$	246,318
Plan Fiduciary Net Position		275,710
Net Pension Liability	\$	<u>(29,392)</u>
Plan Fiduciary Net Position as a Percentage of Total Pension Liability		111.93 %
Net Pension Liability as a Percentage of Covered Payroll		(589.37) %
Total Covered Payroll	\$	4,987

LONG-TERM EXPECTED RETURN ON PLAN ASSETS

The long-term expected rate of return on pension plan investments was determined using a building-block method in which best-estimate ranges of expected future real rates of return (expected returns, net of pension plan investment expense and inflation) are developed for each major asset class. These ranges are combined to produce the long-term expected rate of return by weighting the expected future real rates of return by the target asset allocation percentage and by adding expected inflation. Best estimates of arithmetic real rates of return for each major asset class included in the pension plan's target asset allocation as of September 30, 2024, are summarized in the following table:

Asset Allocation

Asset Class	Target Allocation	Long-Term Expected Real Rate of Return*
Domestic Equity Pools	25.0 %	5.3 %
Private Equity Pools	16.0	9.0
International Equity Pools	15.0	6.5
Fixed Income Pools	13.0	2.2
Real Estate and Infrastructure Pools	10.0	7.1
Real Rate and Opportunistic Pools	10.0	6.9
Absolute Return Pools	9.0	5.2
Short-Term Investment Pools	2.0	1.4
TOTAL	<u>100.0 %</u>	

* Long-term rates of return are net of administrative expenses and 2.3% inflation.

RATE OF RETURN

For the fiscal year ended September 30, 2024, the annual money-weighted rate of return on pension plan investment, net of pension plan investment expense, was 15.40%. The money-weighted rate of return expresses investment performance, net of investment expense, adjusted for the changing amounts actually invested.

DISCOUNT RATE

The State of Michigan Retirement Board adopted a Dedicated Gains Policy to lower the discount rate in years where investment returns exceed the current assumption. The DTMB Director and the Board modified the dedicated gains policy to limit the reduction in the discount rate to no lower than 6.00%. A single rate discount of 6.00% was used to measure the total pension liability for fiscal year 2024. In fiscal year 2023, the single discount rate used to measure the total pension liability was 6.00%. This single discount rate was based on the expected rate of return on pension plan investments of 6.00%. The projection of cash flows used to determine this single rate discount was based on assumption that in the future, plan member contributions will be made at the current contribution rate and

FINANCIAL SECTION

NOTES TO BASIC FINANCIAL STATEMENTS

that employer contributions will be made at rates equal to the difference between actuarially determined contribution rates and the member rate. Based on these assumptions, the pension plan's fiduciary net position was projected to be available to make all projected future benefit payments of current plan members. Therefore, the long-term expected rate of return on pension plan investments was applied to projected benefit payments to determine the total pension liability.

SENSITIVITY OF THE NET PENSION LIABILITY TO CHANGES IN THE DISCOUNT RATE

As required by GASB Statement No. 67, we determined the sensitivity of the net pension liability to changes in the single discount rate. The following table presents the plan's net pension liability, calculated using a single discount rate of 6.00%, as well as what the plan's net pension liability would be if it were calculated using a single discount rate that is 1-percentage-point lower or 1-percentage-point higher:

1% Decrease	Current Discount Rate Assumption	1% Increase
5.00%	6.00%	7.00%
<hr/> \$(10,620,524)	<hr/> \$(29,392,246)	<hr/> \$(45,769,403)

TIMING OF THE VALUATION

An actuarial valuation to determine the total pension liability is required to be performed at least every two years. If the actuarial valuation is not calculated as of the plan's fiscal year end, the total pension liability is required to be rolled forward from the actuarial valuation date to the pension plan's fiscal year end.

The total pension liability as of September 30, 2024, is based on the results of an actuarial valuation date of September 30, 2023 and rolled-forward using generally accepted actuarial procedures.

ACTUARIAL VALUATIONS AND ASSUMPTIONS

Actuarial valuations for the pension plan involve estimates of the value of reported amounts and assumptions about the probability of occurrence of events far into the future. Examples include assumptions about future employment and mortality. Amounts determined regarding the funded status of the plan and the actuarially determined contributions (ADC) are subject to continual revision as actual results are compared with past expectations and new estimates are made about the future.

The Schedules of Contributions in Required Supplementary Information present trend information about the amounts contributed to the plan by employers in comparison to the ADC, an amount that is actuarially determined in accordance with the parameters of GASB Statement No. 67 for pension.

Projections of benefits for financial reporting purposes are based on the substantive plan (the plan as understood by the employer and plan members) and include the types of benefits provided at the time of each valuation and the historical pattern of sharing of benefit costs between the employer and plan members to that point. The actuarial methods and assumptions used include techniques that are designed to reduce the effects of short-term volatility in actuarial accrued liabilities and the actuarial value of assets, consistent with the long-term perspective of the calculations.

FINANCIAL SECTION

NOTES TO BASIC FINANCIAL STATEMENTS

The information presented in the required supplementary schedules was determined as part of the actuarial valuation at the date indicated. Additional information as of the latest actuarial valuation follows:

Summary of Actuarial Assumptions

Valuation Date	September 30, 2023
Actuarial Cost Method	Entry-Age, Normal
Asset Valuation Method	Fair Value
Actuarial Assumptions:	
Wage Inflation Rate	2.75%
Investment Rate of Return	6.00%, net of investment expenses
Projected Salary Increases	3.25%, including wage inflation at 2.75%
Cost-of-Living Pension Adjustments	Assumed 3.25% compounded for those eligible
Mortality	
Retirees	PubG-2010 Male and Female Retiree Mortality Tables scaled by 100% for both males and females and adjusted for mortality improvements using projection scale MP-2021 from 2010.
Active	PubG-2010 Male and Female Employee Mortality Tables scaled by 100% for both males and females and adjusted for mortality improvements using projection scale MP-2021 from 2010.
Disabled Retirees	PubNS-2010 Male and Female Disabled Retiree Mortality Tables scaled by 100% for both males and females and adjusted for mortality improvements using projection scale MP-2021 from 2010.
Notes	Assumption changes as a result of an experience study for the period 2017 through 2022 have been adopted by the System for use in the determination of the Total Pension Liability beginning with the September 30, 2023 valuation.

FINANCIAL SECTION

NOTES TO BASIC FINANCIAL STATEMENTS

NOTE 5 – NET OPEB LIABILITY

MEASUREMENT OF THE NET OPEB LIABILITY

The net OPEB liability is to be measured as the total OPEB liability, less the amount of the OPEB plan's fiduciary net position. In actuarial terms, this will be the accrued liability less the fair value of assets (not the smoothed actuarial value of assets that is often encountered in actuarial valuations performed to determine the employer's contribution requirement).

Net OPEB Liability

(in thousands)

Total OPEB Liability	\$7,404
Plan Fiduciary Net Position	14,265
Net OPEB Liability	<u>(\$6,860)</u>
Plan Fiduciary net Position as a Percentage of Total OPEB Liability	192.65 %

LONG-TERM EXPECTED RETURN ON PLAN ASSETS

The long-term expected rate of return on OPEB plan investments was determined using a building-block method in which best-estimate ranges of expected future real rates of return (expected returns, net of OPEB plan investment expense and inflation) are developed for each major asset class. These ranges are combined to produce the long-term expected rate of return by weighting the expected future real rates of return by the target asset allocation percentage and by adding expected inflation. Best estimates of arithmetic real rates of return were provided by the Bureau of Investments (BOI) for each major asset class included in the OPEB plan's target asset allocation as of September 30, 2024. These best estimates are summarized in the following table:

Asset Allocation

<u>Asset Class</u>	<u>Target Allocation</u>	<u>Long-Term Expected Real Rate of Return*</u>
Domestic Equity Pools	25.0 %	5.3 %
Private Equity Pools	16.0	9.0
International Equity Pools	15.0	6.5
Fixed Income Pools	13.0	2.2
Real Estate and Infrastructure Pools	10.0	7.1
Real Rate and Opportunistic Pools	10.0	6.9
Absolute Return Pools	9.0	5.2
Short-Term Investment Pools	2.0	1.4
TOTAL	<u>100.0 %</u>	

* Long-term rates of return are net of administrative expenses and 2.3% inflation.

RATE OF RETURN

For the fiscal year ended September 30, 2024, the annual money-weighted rate of return on OPEB plan investment, net of OPEB plan investment expense, was 11.45%. The money-weighted rate of return expresses investment performance, net of investment expense, adjusted for the changing amounts actually invested.

DISCOUNT RATE

The State of Michigan Retirement Board adopted a Dedicated Gains Policy to lower the discount rate in years where investment returns exceed the current assumption. The DTMB Director and the Board modified the dedicated gains policy to limit the reduction in the discount rate to no lower than 6.00%. A single discount rate of 6.00% was used to measure the total OPEB liability for fiscal year 2024. In fiscal year 2023, the single discount rate used to measure the total OPEB liability was 6.00%. This single discount rate was based on the expected rate of return on pension

FINANCIAL SECTION

NOTES TO BASIC FINANCIAL STATEMENTS

plan investments of 6.00%. The projection of cash flows used to determine this single discount rate was based on the assumption that in the future plan member contributions will be made at the current contribution rate and that employer contributions will be made at rates equal to the difference between actuarially determined contribution rates and the member rate. Based on these assumptions, the OPEB plan's fiduciary net position was projected to be available to make all projected future benefit payments of current plan members. Therefore, the long-term expected rate of return on OPEB plan investments was applied to all periods of projected benefit payments to determine the total OPEB liability.

SENSITIVITY OF THE NET OPEB LIABILITY TO CHANGES IN THE DISCOUNT RATE

As required by GASB Statement No. 74, we have determined the sensitivity of the net OPEB liability to changes, in the single discount rate. The following table presents the plan's net OPEB liability, calculated using a single discount rate of 6.00%, as well as what the plan's net OPEB liability would be if it were calculated using a single discount rate that is 1-percentage-point lower or 1-percentage-point higher:

1% Decrease	Current Discount Rate Assumption	1% Increase
5.00%	6.00%	7.00%
<u>\$(6,065,051)</u>	<u>\$(6,860,218)</u>	<u>\$(7,536,758)</u>

SENSITIVITY OF THE NET OPEB LIABILITY TO HEALTHCARE COST TREND RATE

As required by GASB Statement No. 74, we have determined the sensitivity of the net OPEB liability to changes, in the healthcare cost trend rates. The following table presents the plan's net OPEB liability, calculated using the assumed trend rates as well as what the plan's net OPEB liability would be if it were calculated using a trend rate that is 1-percentage-point lower or 1-percentage-point higher:

1% Decrease	Current Healthcare Cost Trend Rate	1% Increase
<u>\$(7,564,754)</u>	<u>\$(6,860,218)</u>	<u>\$(6,058,029)</u>

TIMING OF THE VALUATION

An actuarial valuation to determine the total OPEB liability is required to be performed at least every two years. If the actuarial valuation is not calculated as of the plan's fiscal year end, the total OPEB liability is required to be rolled forward from the actuarial valuation date to the OPEB plan's fiscal year end.

The total OPEB liability as of September 30, 2024, is based on the results of an actuarial valuation date of September 30, 2023, and rolled-forward using generally accepted actuarial procedures.

ACTUARIAL VALUATIONS AND ASSUMPTIONS

Actuarial valuations for OPEB plan involve estimates of the value of reported amounts and assumptions about the probability of occurrence of events far into the future. Examples include assumptions about future employment, mortality and the healthcare cost trend. Amounts determined regarding the funded status of the plan and the actuarially determined contributions (ADC) are subject to continual revision as actual results are compared with past expectations and new estimates are made about the future.

The Schedules of Contributions in Required Supplementary Information present trend information about the amounts contributed to the plan by employers in comparison to the ADC, an amount that is actuarially determined in accordance with the parameters of GASB Statement No. 74 for OPEB contributions.

Projections of benefits for financial reporting purposes are based on the substantive plan (the plan as understood by the employer and plan members) and include the types of benefits provided at the time of each valuation and the historical pattern of sharing of benefit costs between the employer and plan members to that point. The actuarial methods and assumptions used include techniques that are designed to reduce the effects of short-term volatility in actuarial accrued liabilities and the actuarial value of assets, consistent with the long-term perspective of the calculations.

FINANCIAL SECTION

NOTES TO BASIC FINANCIAL STATEMENTS

The information presented in the required supplementary schedules and notes was determined as part of the actuarial valuation at the date indicated. Additional information as of the latest actuarial follows:

Summary of Actuarial Assumptions

Valuation Date	September 30, 2023
Actuarial Cost Method	Entry-Age, Normal
Asset Valuation Method	Fair Value
Actuarial Assumptions:	
Wage Inflation Rate	2.75%
Investment Rate of Return	6.00%, net of investment expenses
Projected Salary Increases	3.25%, including wage inflation at 2.75%
Healthcare Cost Trend Rate ¹	Pre-65: 7.25% year 1 graded to 3.50% year 15 Post-65: 6.50% year 1 graded to 3.50% year 15
Mortality	
Retirees	PubG-2010 Male and Female Retiree Mortality Tables scaled by 100% for both males and females and adjusted for mortality improvements using projection scale MP-2021 from 2010.
Active	PubG-2010 Male and Female Employee Mortality Tables scaled by 100% for both males and females and adjusted for mortality improvements using projection scale MP-2021 from 2010.
Disabled Retirees	PubNS-2010 Male and Female Disabled Retiree Mortality Tables scaled by 100% for both males and females and adjusted for mortality improvements using projection scale MP-2021 from 2010.
Other Assumptions:	
Opt Out Assumptions	0% of eligible participants are assumed to opt out of the retiree health plan.
Survivor Coverage	100% of male and female retirees are assumed to have coverage continuing after the retiree's death when 2-person coverage was assumed to be elected.
Coverage Election at Retirement	75% of male and 60% of female future retirees who elect coverage are assumed to elect coverage for 1 or more dependents.
Notes	Assumption changes as a result of an experience study for the period 2017 through 2022 have been adopted by the System for use in the determination of the Total OPEB Liability beginning with September 30, 2023 valuation.

¹ Applies to Medical and Rx payments.

FINANCIAL SECTION

NOTES TO BASIC FINANCIAL STATEMENTS

NOTE 6 – INVESTMENTS

INVESTMENT AUTHORITY

The State of Michigan Investment Board (Board) was created by Executive Order 2018-10 (Order) and serves as the investment fiduciary over the assets of the State sponsored defined benefit retirement systems. The Board is responsible for investing the System's assets in accordance with the duties and powers enumerated in the Order and with Public Act 380 of 1965, as amended. Investments are made subject to the Public Employee Retirement System Investment Act, Public Act 314 of 1965, as amended. The Public Employee Retirement System Investment Act authorizes, with certain restrictions, the investment of System assets in stocks, corporate and government bonds and notes, mortgages, real estate, and certain short-term and private equity investments. Investments must be made for the exclusive purposes of providing benefits to active members, retired members and beneficiaries, and for defraying the expenses of investing the assets.

DERIVATIVE INSTRUMENTS

The Board employs the use of derivative instruments in the investment of the pension and other employee benefit trust funds (the trust funds).

Derivative instruments are used in managing the trust funds' portfolios but uses do not include speculation or leverage of investments. State investment statutes limit total derivative instrument exposure to 15% of a fund's total asset value and restrict uses to replication of returns and hedging of assets. Swap agreements represent the largest category of derivative instrument investments subject to this limitation. Option and Future contracts traded daily on an exchange and settling in cash daily or having a limited and fully defined risk profile at an identified, fixed cost are not subject to the derivative instrument exposure limitation. Less than 15% of the total trust funds' portfolio has been invested from time to time in future contracts, swap agreements, structured notes, options and forward contracts.

The derivative instrument fair values are reported on the *Statement of Pension Plan and Other Postemployment Benefit Plan Fiduciary Net Position* as of September 30, 2024, in their respective investment pool's fair value. Derivative instrument net increase and decrease are reported on the *Statement of Changes in Pension Plan and Other Postemployment Benefit Plan Fiduciary Net Position* for fiscal year ended September 30, 2024, under "Investment income (loss)", in "Net increase (decrease) in fair value of investments". Bond interest, swap payments, and dividends are reported under "Investment income (loss)", in "Interest, dividends, and other".

Derivative Instrument Investments

As of September 30, 2024
(in thousands)

Investment & Investment Type	Percent of Fair Value	Notional Value	Investments at Fair Value	Net Increase (Decrease) in Fair Value	Investment Income Gain (Loss)	Fair Value Subject to Credit Risk
Future contracts -						
Fixed Income and International Investments	- %	\$ 317.5	\$ (1.2)	\$ 18.4	\$ -	\$ -
Option Contracts -						
Equity, Fixed Income and International Equity Investments	0.9	145,464.0	2,493.1	2,630.4	-	-
Swap Agreements -						
Fixed Income and International Equity Investments	2.1	10,644.0	6,207.6	2,845.7	(370.3)	54.1
Totals		<u>\$156,425.5</u>	<u>\$ 8,699.5</u>	<u>\$ 5,494.5</u>	<u>\$ (370.3)</u>	<u>\$ 54.1</u>

FINANCIAL SECTION

NOTES TO BASIC FINANCIAL STATEMENTS

To diversify the trust funds' portfolio, the Board will enter into international swap agreements with investment grade counterparties, which are tied to stock market indices in approximately forty-six foreign countries. Generally, the notional amount of equity swaps tied to foreign stock market indices is executed via a net total return USD index. The swap agreements provide that the System will pay quarterly or at maturity over the term of the swap agreements, interest indexed to the Secured Overnight Financing Rate (SOFR) or the U.S. Federal Funds Rate, adjusted for an interest rate spread, on the notional amount stated in the agreements. International equity swap agreement maturity dates range from October 2024 to June 2025. U.S. Treasury Bonds, U.S. Corporate Bonds and other public market fixed income securities, as well as other investments are held to correspond with the notional amount of the international swap agreements.

The value of the international synthetic equity structures is a combination of the value of the swap agreements and the value of the notes and other investments in the collateral portfolio. The book value represents the cost of the bonds, notes and other investments. The current value represents the current value of the bonds, notes and other investments and the change in the value of the underlying indices from the inception of the swap agreements. The current value is used as a representation of the fair value based on the intention to hold all swap agreements until maturity. At the maturity of the swap agreements, the trust funds will either receive the increase in the value of the equity indices from the level at the inception of the agreements or pay the decrease in the value of the indices. U.S. Treasuries, cash, publicly traded fixed income investments and private market investments are held in the collateral portfolio to correspond with the notional amount of the swap agreements. The combined swap structure generally realizes gains and losses on a rolling basis.

To reduce the risk in the Fixed Income and International Equity portfolio, the Board has entered into foreign exchange (FX) swap agreements, interest rate swaps agreements and credit default swap agreements with investment grade counterparties. The FX swap agreements are tied to foreign currency forward exchange rates and are used to reduce the currency risk with the Fixed Income portfolio. The swap agreements are entered into on an as-needed basis and are generally tied to the maturity of the foreign government bond indenture denominated in a foreign currency. The purpose of the FX swap agreement that has a final maturity date of less than three months, is to reduce or eliminate the currency risk on foreign bond transactions. U.S. Domestic SOFR-based floating rate notes, U.S. Treasury securities and portfolio cash are held to correspond with the notional amount of FX swap agreements within the Fixed Income and International Equity portfolio. Interest rate swaps are used to adjust interest rate and yield curve exposure and substitute for physical securities. Long swap positions that receive fixed rate, increase exposure to long-term interest rates; short swap positions that pay fixed rate, decrease exposure. Credit default swaps (CDS) are used to manage credit exposure without buying or selling securities outright. Written CDS increase credit exposure, selling protection, obligating the portfolio to buy bonds from counterparties in the event of a default. Purchased CDS decrease exposure, buying protection, providing the right to "Put" bonds to the counterparty in the event of default.

Counterparty credit risk is the maximum loss amount that would be incurred if the counterparties to the derivative instrument failed to perform according to the terms of the contract, without respect to any collateral or other security, or netting arrangement. For the Over-the-Counter (OTC) derivative instrument investments, the System held collateral of \$421.4 thousand in cash deposits and \$631.6 thousand in securities on behalf of counterparties. Collateral securities in the amount of \$0 were held on our behalf by counterparties.

The Board traded bond future contracts to manage duration and yield curve exposure, adjust interest rate exposures and replicate bond positions.

To enhance returns while limiting downside risk, the Board traded equity options in single securities and on indices in the Large Cap Core and All Cap GARP funds. Attractively priced equity options were used for the purpose of stock replacement in order to drive excess returns over the S&P 500, as well as to provide added exposure to strong equity markets while limiting principal at risk. Put options are used to protect against large negative moves in market indices. Options traded by the Board in the Fixed Income and International Equity pools are used to manage interest rate and volatility exposures. Written options generated income in expected interest rate scenarios and may generate capital losses, if unexpected interest rate environments are realized. Both written and purchased options will become worthless at expiration if the underlying instrument does not reach the strike price of the option. However, purchased options are often sold well before expiration in order to lock in profits at prices well below listed strike prices, and thereby generate consistent returns.

FINANCIAL SECTION

NOTES TO BASIC FINANCIAL STATEMENTS

SECURITIES LENDING

The System, pursuant to a Securities Lending Authorization Agreement, has authorized State Street Bank and Trust Company ("State Street") to act as the System's agent in lending the System's securities to approved borrowers. State Street, as agent, enters into Securities Loan Agreements with borrowers.

During the fiscal year, State Street lent, on behalf of the Board, certain securities of the System held by State Street as custodian and received cash or other collateral including securities issued or guaranteed by the United States government. The types of securities lent were equity, and fixed income, which includes government and corporate bonds and notes. State Street does not have the ability to pledge or sell collateral securities delivered absent a borrower default. Borrowers were required to deliver collateral for each loan equal to at least 100% of the fair value of the loaned securities.

Pursuant to the Securities Lending Authorization Agreement, State Street had an obligation to indemnify the System in the event of default by a borrower. There were no failures by any borrowers to return loaned securities or pay distributions thereon during the fiscal year that resulted in a declaration or notice of default of the Borrower.

During the fiscal year, the System and the borrowers maintained the right to terminate securities lending transactions upon notice. The cash collateral received on each loan was invested, together with the cash collateral of other qualified tax-exempt plan lenders, in a collective investment pool. As of September 30, 2024, such investment pool had an average duration of 5 days and an average weighted final maturity of 99 days for USD. Because the loans were terminable at will their duration did not generally match the duration of the investments made with cash collateral. On September 30, 2024 the System had no credit risk exposure to borrowers. The fair value of collateral held and the fair value (USD) of securities on loan for the System as of September 30, 2024 was \$13.9 million and \$13.5 million respectively.

RISK

In accordance with GASB Statement No. 40, *Deposit and Investment Risk Disclosures*, as amended, investments require certain disclosures regarding policies and practices and the risks associated with them. The credit risk (including custodial credit risk and concentration of credit risk), the interest rate risk, and the foreign currency risk are discussed in the following paragraphs. Amounts represent the pro rata share of the underlying investments as required by GASB Statement No. 40. These investments are held in internal investment pools and reported as such in the financial statements.

Credit Risk

Credit risk is the risk that an issuer will not fulfill its obligations.

- Short-Term Fixed Income Investments – Eligible commercial paper investments must be rated within one of the two highest rating classifications ("1" or "2") at the time of purchase from two of the nationally recognized statistical ratings organizations (NRSROs) specified in Public Act 314 of 1965, as amended. Borrowers must have at least \$400.0 million in commercial paper outstanding, and the Board may not invest in more than 10% of the borrower's outstanding debt.
- Long-Term Fixed Income Investments – Investment grade and noninvestment grade securities may be acquired in compliance with the parameters set forth in Public Act 314 of 1965, as amended, and the Board's Investment Policy Statement for the System. Public Act 314 defines investment grade as investments in the top four major grades, rated by one of the NRSROs. At September 30, 2024, the System was in compliance with Public Act 314 and the Investment Policy Statement in all material aspects.

FINANCIAL SECTION

NOTES TO BASIC FINANCIAL STATEMENTS

Rated Debt Investments

(in thousands)

As of September 30, 2024

Investment Type	Fair Value	S&P	Fair Value	Moody's
Short-Term	\$ 13,381	A-1	\$ 13,103	P-1
	725	A-2	207	P-2
	-	NR	797	NR
Money Market	289	AAA	289	Aaa
Government Securities				
U.S. Agencies-Sponsored	1	AAA	13,980	Aaa
	13,968	AA	-	Aa
	11	A	-	A
Fixed Income	506	AAA	1,646	Aaa
	1,027	AA	637	Aa
	2,389	A	2,558	A
	4,366	BBB	3,415	Baa
	1,025	BB	1,168	Ba
	646	B	899	B
	243	CCC	349	Caa
	42	CC	249	Ca
	15	C	40	C
	57	D	-	D
	9,126	NR	8,480	NR
Fixed Income ETF	3,841	NR	3,841	NR
Mutual Funds	55	BB	-	Ba
	720	NR	776	NR
Securities Lending Collateral				
Short-Term	1,502	A-1	1,792	P-1
Fixed Income	480	AA	2,959	Aa
	11,605	A	3,730	A
	290	NR	5,397	NR
Total	<u>\$ 66,310</u>		<u>\$ 66,310</u>	

NR- not rated

FINANCIAL SECTION

NOTES TO BASIC FINANCIAL STATEMENTS

Custodial Credit Risk

Custodial credit risk for investments is the risk that, in the event of a failure of the counterparty, the State will not be able to recover the value of the investment or collateral securities that are in the possession of an outside party.

Investment securities are exposed to custodial credit risk if the securities are uninsured, are not registered in the name of the government and are held by either the counterparty or the counterparty's trust department or agent, but not in the government name.

The Board does not have a policy for custodial credit risk. However, the State's custodial bank had a credit rating of A at September 30, 2024. As of September 30, 2024, no securities were exposed to custodial credit risk.

Concentration of Credit Risk

Concentration of credit risk is the risk of loss attributed to the magnitude of a government's investment in a single issuer.

Other than obligations issued, assumed or guaranteed by the United States, its agencies or United States government sponsored enterprises, the System is prohibited by Public Act 314 of 1965, as amended, from investing more than 5% of the outstanding obligations of any one issuer or investing more than 5% of a System's assets in the obligations of any one issuer. When calculating the amount of outstanding obligations, the System includes publicly issued and privately held debt.

At September 30, 2024, there were no investments in any single issuer that accounted for more than 5% of the System's assets. The System held no investments that exceeded the 5% cap in obligations of any one issuer.

Interest Rate Risk – Fixed Income Investments

Interest rate risk is the risk that changes in interest rates of debt investments will adversely affect the fair value of an investment.

The Board's policy states that cash equivalents are invested in short-term fixed income securities with an average weighted maturity of less than one year to provide liquidity and safety of principal from capital market and default risk. At September 30, 2024, the fair value of the System's short-term investments was \$14.4 million with the weighted average maturity of 35 days.

The Board does not have a policy regarding interest rate risk for long-term debt investments. However, the trust funds are invested with a long-term strategy. The goal is to balance higher returns while accepting minimum risk for the return. Analyzing the yield curve on individual securities as compared to U.S. Treasuries determines, in part, what is an acceptable risk for the return. Therefore, market conditions such as lower interest rates result in shorter duration and higher interest rates result in longer duration.

FINANCIAL SECTION

NOTES TO BASIC FINANCIAL STATEMENTS

Debt Securities

(in thousands)

As of September 30, 2024

	<u>Fair Value</u>	<u>Effective Duration in Years</u>
Government		
U. S. Treasury	\$ 13,544	12.3
U. S. Agencies - Backed	4,529	5.6
U. S. Agencies - Sponsored	13,980	4.9
Corporate	24,058	2.6
International*		
U. S. Treasury	3,553	1.0
Total	<u>\$ 59,664</u>	

Debt securities are exclusive of securities lending collateral.

* International contains Domestic Government as a part of their derivative strategies. The interest rates reset on a quarterly basis for these securities.

Foreign Currency Risk

Foreign currency risk is the risk that changes in exchange rates will adversely affect the fair value of an investment or deposit.

The System invests in various securities denominated in foreign currencies. Authorized global securities include equities, fixed income, mutual funds, real estate, and limited partnerships. These investments are limited to 30% of the total assets of the System with additional limits of not more than 5% of the outstanding global securities of any one issuer and no more than 5% of the System's assets in the global securities of any one issuer. In addition to these limits, the Board cannot acquire securities with companies that have active business operations in the state sponsors of terror as identified by the United States Secretary of State. At September 30, 2024, the total amount of foreign investment subject to foreign currency risk was \$23.1 million, which amounted to 8.0% of total investments (exclusive of securities lending collateral) of the System.

FINANCIAL SECTION

NOTES TO BASIC FINANCIAL STATEMENTS

Foreign Currency Risk

As of September 30, 2024

Region	Country	Currency	Equity Fair Value in U.S. \$	Fixed Income Fair Value in U.S. \$	International & Absolute Return Fair Value in U.S. \$	Private Equity, Real Estate, & Infrastructure Fair Value in U.S. \$
AMERICA						
	Brazil	Real	\$ -	\$ 21,868	\$ 80,986	\$ -
	Canada	Dollar	59,029	11,335	324,207	12,789
	Mexico	Peso	3,694	19,690	99,245	-
	Peru	Sol	-	4,892	-	-
	Chile	Peso	-	13,184	2,508	-
PACIFIC						
	Australia	Dollar	25,494	52,388	245,682	-
	Hong Kong	Dollar	-	-	407,285	-
	India	Rupee	-	30,869	118,066	-
	Indonesia	Rupiah	3,437	48,438	14,738	-
	Japan	Yen	4,809	142,449	589,889	-
	Malaysia	Ringgit	-	57,808	6,401	-
	Taiwan	New Dollar	-	-	86,404	-
	China	Renminbi	14,919	-	65,310	-
	Singapore	Dollar	4,408	27,291	21,993	-
	South Korea	Won	-	59,658	139,186	-
	Thailand	Baht	-	10,408	121,779	-
	New Zealand	Dollar	-	13,206	41,904	-
	China	Yuan	375	(12,735)	14,918	-
	China	Yuan Offshore	-	66,055	10,015	-
	Philippines	Peso	-	-	1,016	-
	United Arab Emirates	Dirham	278	-	2,306	-
EUROPE						
	Denmark	Krone	27,433	-	233,981	-
	European Union	Euro	498,341	184,572	1,550,934	1,605,615
	Hungary	Forint	-	4,947	5,903	-
	Norway	Krone	-	-	4,852	57,824
	Poland	Zloty	-	3,751	24,241	-
	United Kingdom	Pound Sterling	80,660	51,685	581,691	131,506
	Romania	Leu	-	2,214	-	-
	Sweden	Krona	37,436	5,979	361,761	-
	Switzerland	Franc	18,613	-	163,976	-
	Türkiye	Lira	-	-	13,542	-
	Czech Republic	Koruna	-	2,741	-	-
AFRICA						
	South Africa	Rand	-	6,529	10,985	-
	Egypt	Pound	-	18,692	-	-
	Liberia	Dollar	27,848	-	-	-
MIDDLE EAST						
	Israel	New Shekel	-	-	3,580	-
	Saudi Arabia	Riyal	-	-	1,074	-
WORLD-WIDE						
	Various	Various	-	-	14,305,997	-
	Total		\$ 806,774	\$ 847,914	\$ 19,656,357	\$ 1,807,734

FINANCIAL SECTION

NOTES TO BASIC FINANCIAL STATEMENTS

FAIR VALUE MEASUREMENTS

The System categorizes its fair value measurements within the fair value hierarchy established by generally accepted accounting principles. The hierarchy is based on the valuation inputs used to measure the fair value of the asset. Not all investments held by the System are recorded at fair value. GASB Statement No. 72 allows for certain investments to be recorded at cost (or amortized cost or any other valuation method), and therefore, they are not presented in the fair value hierarchy table. Equity and Fixed Income Securities classified in Level 1 of the fair value hierarchy are valued using prices quoted in active markets for those securities. Equity Swaps and Fixed Income Securities classified in Level 2 of the fair value hierarchy are valued using a matrix pricing technique and other significant observable inputs. Equity and Fixed Income Securities classified as Level 3 of the fair value hierarchy are valued using third-party data and reports that are unobservable. Securities reported at Net Asset Value (NAV) are valued using the most recent third-party statement adjusted for cash flows as of September 30, 2024. Investments that are measured at fair value using the Net Asset Value per share (or its equivalent) as a practical expedient are not classified in the fair value hierarchy on the following page.

In instances where inputs used to measure fair value fall into different levels in the above fair value hierarchy, fair value measurements in their entirety are categorized based on the lowest level input that is significant to the valuation. The System's assessment of the significance of particular inputs to these fair value measurements requires judgment and considers factors specific to each asset or liability.

	Fair Value Measurements Using			
	Balance at September 30, 2024	Quoted Prices in Active Markets for Identical Assets (Level 1)	Significant Other Observable Inputs (Level 2)	Significant Unobservable Inputs (Level 3)
Investments by fair value level:				
Total cash and cash equivalents	\$ 8,657	\$ 8,657	\$ -	\$ -
Equity				
Depository Receipts	479,929	479,929	-	-
Common Stocks	51,152,896	51,149,188	-	3,708
Preferred Stocks	27,101	27,101	-	-
Real Estate Investment Trusts	2,484,749	2,484,749	-	-
Swaps	1,003,758	-	1,003,758	-
Commingled Funds, ETF's, and PTP's	13,723,551	13,729,327	(5,776)	-
Options	2,187,839	2,187,839	-	-
Convertible Bonds	110,663	-	110,663	-
Rights	88	88	-	-
Total Equity	71,170,575	70,058,221	1,108,645	3,708
Fixed Income				
Asset Backed	5,219,797	-	5,219,797	-
Corporate Bonds	7,566,164	-	7,471,948	94,215
Commercial Mortgage-backed	7,635,137	-	7,584,056	51,081
Government Issues	18,222,245	16,941,202	1,281,043	-
Swaps	55,373	-	55,373	-
US Agency Issues	16,292,555	-	16,292,555	-
Commingled Funds, ETF's, and PTP's	4,662,109	4,662,109	-	-
Options	13,211	-	13,211	-
Total Fixed Income	59,666,591	21,603,311	37,917,983	145,297
Total investments by fair value level	\$ 130,845,823	\$ 91,670,189	\$ 39,026,628	\$ 149,005
Investments measured at the net asset value (NAV)				
Private Equity	\$ 55,960,065			
Real Estate & Infrastructure	19,141,260			
Absolute Return	23,641,382			
Real Return & Opportunistic	22,296,823			
Other Limited Partnerships	17,610,339			
Total investments measured at the NAV	\$ 138,649,869			
Total investments measured at fair value	\$ 269,495,690			

FINANCIAL SECTION

NOTES TO BASIC FINANCIAL STATEMENTS

Additional disclosures for fair value measurements of investments in certain entities that calculate the Net Asset Value per Share (or its equivalent):

Private Equity Funds

(in millions)

Total investments measured at the NAV	\$	56.0
Unfunded commitments		18.0

This type includes investments in approximately 300 partnerships that invest in leveraged buyouts, venture capital, mezzanine debt, distressed debt, secondary funds and other investments. These types of investments can never be redeemed with the funds, but distributions are received through the liquidation of the underlying assets of the fund. It's expected that the underlying assets of the fund are liquidated over a period of five to eight years. However, as of September 30, 2024, it is probable that all of the investments in this group will be sold at an amount different from the NAV per share (or its equivalent). Therefore, the fair values of the investments in this type have been determined using recent observable transaction information for similar investments and nonbinding bids received from potential buyers of the investments. As of September 30, 2024, a buyer for these investments has not been identified.

Real Estate and Infrastructure

(in millions)

Total investments measured at the NAV	\$	19.1
Unfunded commitments		5.9

Real Estate and Infrastructure funds include approximately 117 accounts (limited partnerships, limited liability companies, etc.) that invest in real estate or infrastructure related assets. The fair value of the Real Estate and Infrastructure funds have been determined in accordance with generally accepted accounting principles using the NAV per share (or its equivalent) of the Plan's ownership interest in partners' capital. These types of investments cannot be redeemed with the funds. Distributions from these funds will be received as the underlying investments are sold and liquidated over time. It is expected that the underlying assets will be sold over the next 5 – 15 years. However, buyers have not been determined so the fair value has been determined using the NAV per share (or its equivalent) of the Plan's ownership interest in partners' capital.

Absolute Return Portfolio

(in millions)

Total investments measured at the NAV	\$	23.6
Unfunded commitments		7.1

This type includes approximately 5 investments in hedge funds and hedge fund of funds and approximately 61 investments in private credit strategies. These investments seek to diversify risk and reduce volatility. The fair values of the investments in this type have been determined using the NAV per share (or its equivalent) of the investments. Most of the investments are redeemable or have a final fund term that is 10 years or less.

Real Return and Opportunistic Portfolio

(in millions)

Total investments measured at the NAV	\$	22.3
Unfunded commitments		7.0

FINANCIAL SECTION

NOTES TO BASIC FINANCIAL STATEMENTS

This type includes 40 funds that invest in private credit, tangible and intangible real assets, or other real return and opportunistic strategies. The fair values of the investments in this portfolio have been determined using the NAV per share (or its equivalent) of the Plan's ownership interest in partners' capital. These investments can never be redeemed with the funds. Distributions from each fund will be received as the underlying investments of the funds are liquidated. It is expected that the underlying assets of the funds will be liquidated over the next 5 to 10 years.

All Other Investments

(in millions)

Total investments measured at the NAV	\$	17.6
Unfunded commitments		2.8

The balance of plan assets reported at fair value include 19 investments:

- LPs that invest in fixed income type investment such as: residential rehabilitation, middle market business loans and senior secured debt financing. These investments cannot be redeemed by limited partners. Distributions are received through the liquidation of the underlying assets of the fund.
- LPs that invest in fixed income type investments permitting partners to request redemption monthly or quarterly, after initial lock up period of 1 year or less, requiring 45 to 65 days' advance notice.
- LPs investing in global investments permitting partners to request partial redemptions quarterly or monthly, with advance notice, subject to the sole discretion of the general partner.
- LPs that invest in private equity, private credit/loans, and tangible real assets that cannot be redeemed by limited partners. Distributions from each fund will be received as the underlying investments of the funds are liquidated.

NOTE 7 – COMMITMENTS AND CONTINGENCIES

Under the Administrative Procedures Act, members may appeal a decision made by the Retirement Board. Once the administrative procedure has been exhausted, the decision may be appealed in Michigan's court system. Various cases that have exhausted the administrative procedures have been appealed in the court system. These cases are in the normal course of business and the System does not anticipate any material loss as a result of the contingent liabilities.

FINANCIAL SECTION

REQUIRED SUPPLEMENTARY INFORMATION

SCHEDULE OF CHANGES IN NET PENSION LIABILITY

(in thousands)

	2024	2023	Fiscal Year 2022	2021	2020
Total Pension Liability					
Service cost	\$ 811	\$ 1,052	\$ 1,241	\$ 1,664	\$ 1,733
Interest	14,385	14,849	15,783	16,278	16,631
Differences between expected and actual experience	4,737	(1,749)	(1,934)	(1,331)	286
Changes of assumptions	-	3,585	4,539	-	-
Benefit payments, including refunds of member contributions	(25,918)	(24,796)	(24,355)	(24,281)	(24,251)
Net Change in Total Pension Liability	<u>(5,986)</u>	<u>(7,059)</u>	<u>(4,726)</u>	<u>(7,670)</u>	<u>(5,601)</u>
	-	-	-	-	-
Total Pension Liability - Beginning	<u>252,304</u>	<u>259,363</u>	<u>264,089</u>	<u>271,759</u>	<u>277,360</u>
Total Pension Liability - Ending (a)	<u><u>\$ 246,318</u></u>	<u><u>\$ 252,304</u></u>	<u><u>\$ 259,363</u></u>	<u><u>\$ 264,089</u></u>	<u><u>\$ 271,759</u></u>
Plan Fiduciary Net Position					
Contributions - employer	\$ 1,005	\$ 1,274	\$ 1,517	\$ 2,850	\$ 2,840
Contributions - member	222	254	359	415	500
Net investment income	38,924	21,198	(12,900)	66,635	12,933
Benefit payments, including refunds of member contributions	(25,918)	(24,796)	(24,355)	(24,281)	(24,251)
Administrative and other expenses	(328)	(355)	(332)	(376)	(386)
Net Change in Plan Fiduciary Net Position	<u>13,905</u>	<u>(2,425)</u>	<u>(35,711)</u>	<u>45,243</u>	<u>(8,364)</u>
	261,805	264,230	299,941	254,697	263,061
Plan Fiduciary Net Position - Beginning	<u>261,805</u>	<u>264,230</u>	<u>299,941</u>	<u>254,697</u>	<u>263,061</u>
Plan Fiduciary Net Position - Ending (b)	<u><u>\$ 275,710</u></u>	<u><u>\$ 261,805</u></u>	<u><u>\$ 264,230</u></u>	<u><u>\$ 299,941</u></u>	<u><u>\$ 254,697</u></u>
Net Pension Liability - Ending (a) - (b)	<u><u>\$ (29,392)</u></u>	<u><u>\$ (9,501)</u></u>	<u><u>\$ (4,867)</u></u>	<u><u>\$ (35,852)</u></u>	<u><u>\$ 17,061</u></u>
Plan Fiduciary Net Position as a Percentage of the Total Pension Liability	111.93 %	103.77 %	101.88 %	113.58 %	93.72 %
Covered Payroll¹	\$ 4,987	\$ 4,893	\$ 6,432	\$ 7,868	\$ 9,263
Net Pension Liability as a Percentage of Covered Payroll	(589.41) %	(194.19) %	(75.68) %	(455.67) %	184.19 %

¹ For fiscal years prior to 2017, covered payroll is valuation payroll projected to the indicated fiscal year.

FINANCIAL SECTION

REQUIRED SUPPLEMENTARY INFORMATION

	Fiscal Year (continued)				
	2019	2018	2017 ¹	2016	2015
Total Pension Liability					
Service cost	\$ 1,966	\$ 1,587	\$ 1,862	\$ 2,036	\$ 2,439
Interest	17,601	19,100	19,688	19,743	19,771
Differences between expected and actual experience	4	(1,498)	(4,923)	(1,290)	924
Changes of assumptions	10,077	26,653	-	2,423	-
Benefit payments, including refunds of member contributions	(24,111)	(23,958)	(23,724)	(23,302)	(23,241)
Net Change in Total Pension Liability	5,536	21,884	(7,096)	(389)	(108)
Total Pension Liability - Beginning	271,824	249,940	257,036	257,426	257,534
Total Pension Liability - Ending (a)	<u>\$ 277,360</u>	<u>\$ 271,824</u>	<u>\$ 249,940</u>	<u>\$ 257,036</u>	<u>\$ 257,426</u>
Plan Fiduciary Net Position					
Contributions - employer	\$ 2,828	\$ 1,736	\$ 1,020	\$ 2,180	\$ 2,634
Contributions - member	566	653	697	805	902
Net investment income	13,036	28,280	32,258	18,425	5,840
Benefit payments, including refunds of member contributions	(24,111)	(23,958)	(23,724)	(23,302)	(23,241)
Administrative and other expenses	(374)	(413)	(344)	(320)	(309)
Net Change in Plan Fiduciary Net Position	(8,055)	6,299	9,907	(2,211)	(14,175)
Plan Fiduciary Net Position - Beginning	271,116	264,817	254,910	257,121	271,296
Plan Fiduciary Net Position - Ending (b)	<u>\$ 263,061</u>	<u>\$ 271,116</u>	<u>\$ 264,817</u>	<u>\$ 254,910</u>	<u>\$ 257,121</u>
Net Pension Liability - Ending (a) - (b)	<u>\$ 14,298</u>	<u>\$ 707</u>	<u>\$ (14,878)</u>	<u>\$ 2,126</u>	<u>\$ 304</u>
Plan Fiduciary Net Position as a Percentage of the Total Pension Liability	94.84 %	99.74 %	105.95 %	99.17 %	99.88 %
Covered Payroll¹	\$ 10,206	\$ 12,047	\$ 12,685	\$ 14,757	\$ 17,518
Net Pension Liability as a Percentage of Covered Payroll	140.10 %	5.87 %	(117.29) %	14.41 %	1.74 %

FINANCIAL SECTION

REQUIRED SUPPLEMENTARY INFORMATION

SCHEDULE OF CHANGES IN NET OPEB LIABILITY

(in thousands)

	Fiscal Year ¹				
	2024	2023	2022	2021	2020
Total OPEB Liability					
Service cost	\$ 230	\$ 224	\$ 197	\$ 229	\$ 250
Interest	432	506	682	726	622
Differences between expected and actual experience	(528)	(2,212)	(3,108)	(1,294)	60
Changes of assumptions	217	281	889	(306)	632
Benefit payments, including refunds of member contributions	(61)	(9)	54	(17)	(99)
Net Change in Total OPEB Liability	<u>289</u>	<u>(1,210)</u>	<u>(1,285)</u>	<u>(661)</u>	<u>1,465</u>
Total OPEB Liability - Beginning	<u>7,115</u>	<u>8,325</u>	<u>9,611</u>	<u>10,271</u>	<u>8,806</u>
Total OPEB Liability - Ending (a)	<u>\$ 7,404</u>	<u>\$ 7,115</u>	<u>\$ 8,325</u>	<u>\$ 9,611</u>	<u>\$ 10,271</u>
Plan Fiduciary Net Position					
Contributions - employer	\$ -	\$ -	\$ 242	\$ 216	\$ 398
Contributions - member	105	115	125	108	133
Net investment income	1,817	830	(614)	2,325	468
Benefit payments, including refunds of member contributions	(61)	(9)	54	(17)	(99)
Administrative and other expenses	(47)	(9)	(66)	(102)	(53)
Net Change in Plan Fiduciary Net Position	<u>1,814</u>	<u>928</u>	<u>(259)</u>	<u>2,531</u>	<u>847</u>
Plan Fiduciary Net Position - Beginning	<u>12,451</u>	<u>11,523</u>	<u>11,782</u>	<u>9,252</u>	<u>8,405</u>
Plan Fiduciary Net Position - Ending (b)	<u>\$ 14,265</u>	<u>\$ 12,451</u>	<u>\$ 11,523</u>	<u>\$ 11,782</u>	<u>\$ 9,252</u>
Net OPEB Liability - Ending (a) - (b)	<u>\$ (6,860)</u>	<u>\$ (5,336)</u>	<u>\$ (3,198)</u>	<u>\$ (2,172)</u>	<u>\$ 1,020</u>
Plan Fiduciary Net Position as a Percentage of the Total OPEB Liability	192.65 %	174.99 %	138.41 %	122.60 %	90.07 %

¹ This schedule is required to show information for ten years; additional years will be displayed as they become available.

FINANCIAL SECTION

REQUIRED SUPPLEMENTARY INFORMATION

	Fiscal Year (continued)		
	2019	2018	2017
Total OPEB Liability			
Service cost	\$ 218	\$ 171	\$ 177
Interest	584	542	527
Differences between expected and actual experience	(164)	399	(32)
Changes of assumptions	257	1,080	-
Benefit payments, including refunds of member contributions	(651)	(638)	(334)
Net Change in Total OPEB Liability	<u>245</u>	<u>1,554</u>	<u>339</u>
Total OPEB Liability - Beginning	<u>8,562</u>	<u>7,007</u>	<u>6,669</u>
Total OPEB Liability - Ending (a)	<u><u>\$ 8,806</u></u>	<u><u>\$ 8,562</u></u>	<u><u>\$ 7,007</u></u>
Plan Fiduciary Net Position			
Contributions - employer	\$ 7,557	\$ 539	\$ 189
Contributions - member	102	113	117
Net investment income	404	104	119
Benefit payments, including refunds of member contributions	(651)	(638)	(334)
Administrative and other expenses	(62)	(89)	(95)
Net Change in Plan Fiduciary Net Position	<u>7,350</u>	<u>29</u>	<u>(4)</u>
Plan Fiduciary Net Position - Beginning	<u>1,055</u>	<u>1,026</u>	<u>1,030</u>
Plan Fiduciary Net Position - Ending (b)	<u><u>\$ 8,405</u></u>	<u><u>\$ 1,055</u></u>	<u><u>\$ 1,026</u></u>
Net OPEB Liability - Ending (a) - (b)	<u><u>\$ 401</u></u>	<u><u>\$ 7,507</u></u>	<u><u>\$ 5,982</u></u>
Plan Fiduciary Net Position as a Percentage of the Total OPEB Liability	95.44 %	12.32 %	14.64 %

FINANCIAL SECTION

REQUIRED SUPPLEMENTARY INFORMATION

SCHEDULES OF CONTRIBUTIONS

PENSION BENEFITS

Fiscal Year Ended Sept. 30	Actuarially Determined Contribution (ADC)	Actual Employer Contribution	Contribution Deficiency (Excess)	Covered Payroll ¹	Actual Contribution as a % of Covered Payroll
2015	\$ 2,592,536	\$ 2,633,795	\$ (41,259)	\$ 17,517,763	15.03 %
2016	2,138,379	2,179,641	(41,262)	14,757,461	14.77
2017	1,019,814	1,019,814	-	12,684,596	8.04
2018	1,736,417	1,736,417	-	12,046,554	14.41
2019	2,827,661	2,827,661	-	10,205,801	27.71
2020	2,840,119	2,840,119	-	9,262,668	30.66
2021	2,849,923	2,849,923	-	7,868,002	36.22
2022	1,517,097	1,517,097	-	6,431,730	23.59
2023	1,274,198	1,274,198	-	4,892,769	26.04
2024	1,005,350	1,005,350	-	4,986,708	20.16

¹ For fiscal years prior to 2017, covered payroll is valuation payroll projected to the indicated fiscal year.

OTHER POSTEMPLOYMENT BENEFITS

Fiscal Year Ended Sept. 30	Actuarially Determined Contribution (ADC)	Actual Employer Contributions	Contribution Deficiency (Excess)
2015	\$ 663,321	\$ 274,986	\$ 388,335
2016	712,016	247,339	464,677
2017 ¹	486,906	188,819	298,087
2018	559,300	539,300	20,000
2019	818,102	7,557,353	(6,739,251)
2020	398,154	398,154	-
2021	207,328	216,165	(8,837)
2022	241,689	241,689	-
2023	-	-	-
2024	-	-	-

¹ Contributions for fiscal year 2017 and earlier show contributions equal to the benefits distributed or claimed in that year, referred to as pay-go funding. Beginning with fiscal year 2018, contributions include an additional amount to save for future retiree healthcare benefits, referred to as prefunding.

FINANCIAL SECTION

REQUIRED SUPPLEMENTARY INFORMATION

SCHEDULES OF INVESTMENT RETURNS

PENSION BENEFITS

Fiscal Year	Annual Return¹
2015	(1.85) %
2016	3.48
2017	13.15
2018	11.11
2019	5.00
2020	5.72
2021	26.64
2022	(4.30)
2023	8.73
2024	15.40

¹ Annual money-weighted rate of return, net of investment expenses.

OTHER POSTEMPLOYMENT BENEFITS

Fiscal Year²	Annual Return¹
2017	11.48 %
2018	9.26
2019	6.14
2020	4.91
2021	16.93
2022	15.05
2023	27.29
2024	11.45

¹ Annual money-weighted rate of return, net of investment expenses.

² This schedule is required to show information for ten years; additional years will be displayed as they become available.

FINANCIAL SECTION

NOTE TO REQUIRED SUPPLEMENTARY INFORMATION

NOTE A – DESCRIPTION

Ten-year historical trend information designed to provide information about the System's progress made in accumulating sufficient assets to pay benefits when due is presented in the preceding schedules. Other ten-year historical trend information related to the System is presented in the Statistical and Actuarial Sections of the report. This information is presented to enable the reader to assess the progress made by the System in accumulating sufficient assets to pay pension and other postemployment benefits as they become due.

The comparability of trend information is affected by changes in actuarial assumptions, benefit provisions, actuarial funding methods, accounting policies, and other changes. Those changes usually affect trends in contribution requirements and in ratios that use the pension and other postemployment benefit obligations as a factor.

The Schedules of Contributions are reported as historical trend information and to show the responsibility of the Employer in meeting the actuarial requirements to maintain the System on a sound financial basis.

The Schedules of Changes in Net Pension and OPEB Liability, Schedules of Contributions, and Schedules of Investment Returns are schedules that are required in implementing GASB Statement No. 67 for pension and No. 74 for OPEB. These schedules are required to show information for ten years; additional years will be displayed as they become available. The Schedules of Changes in Net Pension and Net OPEB Liability represent, in actuarial terms, the accrued liability less the fair value of assets. The Schedules of Contributions is a comparison of the employer's contributions to the actuarially determined contributions. The Schedules of Investment Returns represents a money-weighted rate of return that expresses investment performance, net of pension and OPEB plan investment expense, adjusted for the changing amounts actually invested.

FINANCIAL SECTION

NOTE TO REQUIRED SUPPLEMENTARY INFORMATION

The actuarially determined contributions presented in the Schedules of Contributions for pension and OPEB are calculated as of September 30, one year prior to the end of the fiscal year in which contributions are reported. The following actuarial methods and assumptions were used to determine the fiscal year 2024 contributions reported in that schedule.

Methods and Assumptions Used to Determine Contributions for Fiscal Year 2024:

Pension and OPEB

Valuation Date	September 30, 2023
Asset Valuation Method	5 years smoothed fair value
Price Inflation	2.35%
Projected Salary Increases	3.25%, including wage inflation at 2.75%
Retirement Age	Experience-based table of rates that are specific to the type of eligibility condition.
Mortality	
Retirees	PubG-2010 Male and Female Retiree Mortality Tables scaled by 100% for both males and females and adjusted for mortality improvements using projection scale MP-2021 from 2010.
Actives	PubG-2010 Male and Female Employee Mortality Tables scaled by 100% for both males and females and adjusted for mortality improvements using projection scale MP-2021 from 2010.
Disabled Retirees	PubNS-2010 Male and Female Disabled Retiree Mortality Tables scaled by 100% for both males and females and adjusted for mortality improvements using projection scale MP-2021 from 2010.

Pension

Amortization Method	Level dollar
Remaining Amortization Period	13 years, as of October 1, 2023, closed ending September 30, 2036
Actuarial Cost Method	Entry-Age, Normal, (Term cost for death and disability)
Investment Rate of Return	6.00%, net of investment expenses

OPEB

Amortization Method	Level Percent of Payroll
Remaining Amortization Period	20 years, open
Actuarial Cost Method	Entry-Age, Normal
Investment Rate of Return	6.00%, net of investment expenses

Healthcare Cost Trend Rates	Pre-65: 7.25% Year 1 Graded to 3.50% Year 15 Post-65: 6.50% Year 1 Graded to 3.50% Year 15;
Aging factors	Based on the 2013 SOA Study "Health Care Costs – From Birth to Death"

Notes	Some of the assumptions used to develop the 2024 Total Pension Liability (TPL) and the 2024 Total OPEB Liability (TOL) may be different than the assumptions shown above. The assumptions used to develop the TPL are described in Note 4 (page 29) and the TOL are described in Note 5 (page 33) of this report.
-------	---

FINANCIAL SECTION

SUPPORTING SCHEDULES

SUMMARY SCHEDULE OF PENSION PLAN ADMINISTRATIVE AND OTHER EXPENSES

For Fiscal Year Ended September 30, 2024

Personnel Services:

Staff Salaries	\$ 86,776
Staff Retirement and Social Security	45,943
Staff Other Fringe Benefits	17,551
Total	<u>150,271</u>

Professional Services:

Accounting	2,915
Actuarial	68,090
Attorney General	5,161
Audit	72,454
Total	<u>148,620</u>

Building and Equipment:

Building Rentals	1,309
Equipment Purchase, Maintenance, and Rentals	23
Total	<u>1,332</u>

Miscellaneous:

Office Supplies	5
Postage, Telephone, and Other	9,915
Printing	79
Technological Support	18,541
Travel and Board Meetings	7
Total	<u>28,547</u>

Total Administrative and Other Expenses	<u><u>\$ 328,770</u></u>
--	--------------------------

FINANCIAL SECTION

SUPPORTING SCHEDULES

SUMMARY SCHEDULE OF OPEB PLAN ADMINISTRATIVE AND OTHER EXPENSES

For Fiscal Year Ended September 30, 2024

Personnel Services:

Staff Salaries	\$ 30,241
Staff Retirement and Social Security	16,011
Staff Other Fringe Benefits	6,117
Total	52,369

Professional Services:

Accounting	139
Actuarial	3,238
Attorney General	245
Audit	3,446
Total	7,068

Building and Equipment:

Building Rentals	62
Equipment Purchase, Maintenance, and Rentals	1
Total	63

Miscellaneous:

Postage, Telephone and Other	439
Printing	4
Health Fees	11,919
Dental Fees	2,850
Vision Fees	106
Technological Support	882
Total	16,200

Total Administrative and Other Expenses	\$ 75,701
--	------------------

FINANCIAL SECTION

SUPPORTING SCHEDULES

SCHEDULE OF INVESTMENT EXPENSES

For Fiscal Year Ended September 30, 2024

Securities Lending Expenses	\$ 750,908
Other Investment Expenses ¹	
ORS-Investment Expenses ²	49,623
Custody Fees	6,306
Management Fees	1,027,242
Research Fees	33,453
Total Investment Expenses	\$ 1,867,533

¹ Refer to the Investment Section for fees paid to investment professionals.

² Does not exclude Treasury Civil Service fees recorded as a pass through in the Schedule of Investment Fees - State Treasurer. As of September 30, 2024, fees totaled \$856.

SCHEDULE OF PAYMENTS FOR PROFESSIONAL SERVICES

For Fiscal Year Ended September 30, 2024

Accounting	\$ 3,053
Actuary	71,328
Attorney General	5,407
Independent Auditors	75,900
Total Payments	\$ 155,688

FINANCIAL SECTION

SUPPORTING SCHEDULES

DETAIL OF CHANGES IN PLAN FIDUCIARY NET POSITION

(Pension and Other Postemployment Benefits)

For the Fiscal Year Ended September 30, 2024
(in thousands)

	Employee Contributions	Employer Contributions	Retired Benefit Payments	Undistributed Investment Income	OPEB	Total
Additions:						
Contributions:						
Member contributions	\$ 222	\$ -	\$ -	\$ -	\$ 105	\$ 327
Employer contributions	-	1,005	-	-	-	1,005
Other governmental contributions	-	-	-	-	245	245
Total contributions	222	1,005	-	-	350	1,577
Investment income (loss):						
Net increase (decrease) in fair value of investments	-	-	-	33,848	1,526	35,375
Interest, dividends, and other	-	-	-	6,110	340	6,450
Investment expenses:						
Other investment expenses	-	-	-	(1,066)	(51)	(1,117)
Securities lending activities:						
Securities lending income	-	-	-	748	36	784
Securities lending expenses	-	-	-	(716)	(35)	(751)
Net investment income (loss)	-	-	-	38,924	1,817	40,741
Miscellaneous income	-	-	-	-	14	14
Total additions	222	1,005	-	38,924	2,180	42,332
Deductions:						
Benefits paid to plan members and beneficiaries:						
Retirement benefits	-	-	24,835	-	-	24,835
Health benefits	-	-	-	-	290	290
Refunds of contributions	1,083	-	-	-	1	1,084
Administrative and other expenses	-	-	-	329	76	404
Total deductions	1,083	-	24,835	329	367	26,614
Net Increase (Decrease) before other changes	(861)	1,005	(24,835)	38,596	1,814	15,719
Other Changes in Net Position:						
Interest allocation	1,120	2,851	13,356	(17,327)	-	-
Transfers upon retirement	(2,283)	-	2,283	-	-	-
Transfers of employer shares	-	(9,978)	9,978	-	-	-
Total other changes in net position	(1,163)	(7,126)	25,617	(17,327)	-	-
Net Increase (Decrease) in Net Position	(2,025)	(6,121)	782	21,269	1,814	15,719
Net Position Restricted for Pension Benefits and OPEB:						
Beginning of Year	20,224	47,522	222,598	(28,539)	12,451	274,256
End of Year	\$ 18,199	\$ 41,401	\$ 223,379	\$ (7,270)	\$ 14,265	\$ 289,975

FINANCIAL SECTION

SUPPORTING SCHEDULES

This page was intentionally left blank.

INVESTMENT SECTION

**Prepared by Michigan Department of Treasury, Bureau of Investments
Jon M. Braeutigam, Chief Investment Officer**

Report on Investment Activity
Rate of Return on Investments
Largest Assets Held
Schedule of Investment Fees
Schedule of Investment Commissions
Investment Summary

INVESTMENT SECTION

REPORT ON INVESTMENT ACTIVITY

INTRODUCTION

The State of Michigan Investment Board (Board) was created by Executive Order 2018-10 (Order) and serves as the investment fiduciary over the assets of the Michigan Judges' Retirement System (System). The Board is responsible for investing the System's assets in accordance with the duties and powers enumerated in the Order and State law. Pursuant to powers provided in the Order, the Board duly authorized and delegated duties to the Department of Treasury's Bureau of Investments (BOI) to invest, prudently manage, and oversee the assets of the System and to take certain other actions that support the BOI's mandate in this regard. In furtherance of these duties, the BOI delivers quarterly investment activity reports to the Board that detail the investments, goals, and objectives of the System.

The Board is comprised of five members: three (3) public members appointed by the Governor and two (2) ex-officio members. The public members serve four (4) year terms and are limited to two (2) such terms. The State Treasurer, as the chair of the Board, and the State Budget Director are the ex-officio members. As of September 30, 2024, members of the Board were as follows: Rachael Eubanks (chair, ex-officio member), Jennifer Flood (ex-officio member), Reginald G. Sanders, CFA, CAIA (public member), Dina L. Richard, CPA (public member), and Denise Ilitch (public member). The public members serve without pay but may receive reasonable reimbursement for actual and necessary travel and other expenses to attend official Board meetings.

INVESTMENT POLICY & GOALS

The Board's Investment Policy Statement states that it and the BOI will operate in accordance with Public Employee Retirement System Investment Act (Act No. 314 of 1965) and within standard investment practices of the prudent person. This includes being authorized to invest in government obligations, corporate obligations, various short-term obligations, corporate (domestic and international) stocks, private equity interests, mutual funds, real estate interests, and other investments subject to specific parameters. Above all, System assets are to be invested in a fiduciary capacity for the sole and exclusive benefit of the members of the System.

The System's Proxy Voting Policy sets forth directives on various issues as holder of publicly traded securities, including but not limited to: Boards of Directors, corporate governance, social issues, and various corporate actions. All proxies are reviewed and voted by the System's proxy voting agent in accordance with the System's policy.

The primary function of the System is to provide retirement, survivor and disability benefits along with health and other postemployment benefits to its members. The Board is investment fiduciary and custodian of the System's investments pursuant to the Order and other State law. The goals of the System are:

- Maintain sufficient liquidity to pay benefits
- Meet or exceed the actuarial assumption over the long-term
- Perform in the top half of the public plan universe over the long-term
- Diversify assets to reduce risk
- Exceed individual asset class benchmarks over the long-term

The strategy for achieving these goals is supported by investing the assets of the System according to a five-year asset allocation model. The System currently invests in eight different asset classes, which provides for a well-diversified portfolio.

INVESTMENT SECTION

REPORT ON INVESTMENT ACTIVITY

ASSET ALLOCATION

(Excludes Collateral on Loaned Securities)

<u>Investment Category</u>	<u>As of 9/30/24 Actual</u>	<u>Five-Year Target</u>
Domestic Equity Pools	19.7 %	25.0 %
International Equity Pools	12.6	15.0
Private Equity Pools	19.4	16.0
Real Estate and Infrastructure Pools	7.2	10.0
Fixed Income Pools	19.1	13.0
Absolute Return Pools	8.2	9.0
Real Return and Opportunistic Pools	7.7	10.0
Short-Term Investment Pools	6.1	2.0
Total	100.0 %	100.0 %

INVESTMENT AUTHORITY

Pursuant to State law (Executive Order 2018-10, which in part transferred to the Board the powers enumerated in (i) Section 91 of Act No. 380 of the Public Acts of 1965, as amended, and (ii) Section 12c of Act No. 314 of 1965), the Board is the investment fiduciary for the State sponsored defined benefit retirement systems, which are comprised of: Michigan Public School Employees' Retirement System, State Employees' Retirement System, Michigan State Police Retirement System, Michigan Judges' Retirement System, and the Michigan Military Retirement Provisions. The State Treasurer, State of Michigan, is custodian and ex officio treasurer of the retirement system for the Legislators, State of Michigan (Section 47 of Act No. 261 of the Public Acts of 1957, as amended).

Act No. 314 of the Public Acts of 1965, as amended, authorizes the investment of assets of public employee retirement systems or plans created and established by the State or any political subdivision.

INVESTMENT RESULTS

TOTAL PORTFOLIO RESULTS

For the fiscal year ended September 30, 2024, the System's total rate of return was 15.6% for the Pension Plan and 14.3% for the OPEB Plan as compiled by State Street Investment Analytics. Annualized rates of return for the Pension Plan for the three, five, and ten-year periods ending September 30, 2024 were: 5.8%, 9.4%, and 8.6% respectively.

Investment return calculations are prepared using a Time-Weighted rate of return.

DOMESTIC EQUITY POOLS

The objective for investments made in domestic equities is to meet or exceed the total return of the S&P Composite 1500 Index for one, three, and five-year periods and a market cycle.

For active management strategies, the objective is to earn returns that exceed the most relevant S&P Index, adjusting for market capitalization and style, for one, three, and five-year periods and a market cycle. Another objective is to rank above median in a universe of managers possessing a similar market cap and style characteristics.

The pools are invested primarily in equities or equity-related securities of U.S. companies through internal and externally managed strategies. The goal is to build a portfolio of strategies that will provide excess returns relative to the S&P Composite 1500 Index while providing a prudent measure of tracking error to the index. At times a portion of the pools may be invested in exchange traded funds (ETFs) and fixed-income short-term securities with maturities of less than one year.

The pools invest in equities and equity related securities that are listed on U.S. national securities exchanges, including American Depository Receipts (ADRs). They may also invest in stocks that are traded over-the-counter.

INVESTMENT SECTION

REPORT ON INVESTMENT ACTIVITY

The pools diversify their investments by allocating their equity strategies with consideration of the capitalization weightings of the S&P Composite 1500 Index.

The following summarizes the weightings of the pools as of September 30, 2024:

Active	34.8 %
Passive	65.2
Total	<u>100.0 %</u>
Large-Cap	78.0 %
Multi-Cap	17.6
Mid-Cap	3.5
Small-Cap	0.9
Total	<u>100.0 %</u>

The System's Domestic Equity Pools' total rate of return was 40.2% for the Pension and OPEB Plans for fiscal year 2024. This compared with 35.5% for the S&P Composite 1500 Index.

At the close of fiscal year 2024, the Domestic Equity Pools represented 19.7% of total investments. The following summarizes the System's 0.2% ownership share of the Domestic Equity Pools at September 30, 2024:

Domestic Equity Pools

(In thousands)

Short-Term Pooled Investments	\$	2,481
Equities		54,471
Settlement Principal Payable		(25)
Settlement Proceeds Receivable		37
Accrued Dividends		42
Total	\$	<u>57,006</u>

INTERNATIONAL EQUITY POOLS

The objective for investments made in International Equity Pools is to meet or exceed the total return of the MSCI ACWI ex USA Index for one, three, and five-year periods and a market cycle.

For active management strategies, the objective is to earn returns that exceed the most relevant MSCI Index, adjusting for market capitalization, style and geography for one, three, and five-year periods and a market cycle. Another objective is to rank above median in a universe of managers possessing a similar market capitalization, style and geography characteristics.

Active exposure is invested primarily in equities or equity-related securities of non-U.S. companies through externally managed strategies.

The pools diversify their investments by allocating their equity strategies with consideration of the economic development status weightings of the MSCI ACWI ex USA Index.

INVESTMENT SECTION

REPORT ON INVESTMENT ACTIVITY

The following summarizes the weightings of the pool as of September 30, 2024:

Active	65.6 %
Passive	34.4
Total	100.0 %

Developed	98.0 %
Emerging	2.0
Total	100.0 %

The System's International Equity Pools' total rate of return was 26.2% for the Pension Plan and 26.1% for the OPEB Plan for fiscal year 2024. This compared with 25.4% for the MSCI ACWI ex USA Net.

At the close of fiscal year 2024, the International Equity Pools represented 12.6% of total investments. The following summarizes the System's 0.2% ownership share of the International Equity Pools at September 30, 2024:

International Equity Pools

(in thousands)

Short-Term Pooled Investments	\$ 1,053
Equities	30,998
Fixed Income Securities	3,553
Fair Value of Equity Contracts	821
Accrued Dividends and Interest	23
Total	\$ 36,448

PRIVATE EQUITY POOLS

The Private Equity Pools' objective is to meet or exceed the benchmark for all private equity investments over long time periods. The benchmark is the S&P 500 Index plus 300 basis points, net of fees, lagged by three months over three, five, seven, and ten-year periods and a market cycle.

Private Equity Investments are investments in the private equity market, primarily through limited partnerships. The following summarizes the weightings of the pools as of September 30, 2024:

Buyout Funds	44.6 %
Fund of Funds	31.8
Venture Capital Funds	12.1
Special Situation Funds	5.6
Liquidation Portfolio	5.9
Total	100.0 %

INVESTMENT SECTION

REPORT ON INVESTMENT ACTIVITY

The Private Equity Pools had a return of 4.4% for the Pension and OPEB Plans for the fiscal year ended September 30, 2024, versus the benchmark of 28.2%. At the close of fiscal year 2024, the Private Equity Pools represented 19.4% of total investments. The following summarizes the System's 0.2% ownership share of the Private Equity Pools at September 30, 2024:

Private Equity Pools

(in thousands)

Short-Term Pooled Investments	\$ 67
Equities	56,287
Total	\$ 56,354

REAL ESTATE AND INFRASTRUCTURE POOLS

The objective of the Real Estate and Infrastructure Pools is to provide diversification and favorable risk adjusted returns primarily through income and appreciation of investments. Investments are typically held through investment entities, such as limited partnerships or limited liability companies, established for the specific purpose of owning, leasing, managing, financing, or developing real estate and infrastructure related investments.

The Real Estate and Infrastructure Pools diversify its holdings by:

- **Geography** – The pools are invested globally and are diversified geographically so that it is not concentrated in a limited number of markets or geographic areas.
- **Size and Value** – The pools diversify its holdings by size so that it is not concentrated in a limited number of large investments.
- **Investment Type** – The pools are diversified by investment – The pools are diversified by investment type as summarized below.

Multi-family apartments	32.6 %
Commercial office buildings	7.1
Hotel	9.1
Infrastructure	9.6
Industrial warehouse buildings	26.2
Single Family	4.3
Retail Shopping Centers	3.0
Land	1.0
REITs	6.2
Short-Term Investments	0.9
Total	100.0 %

The Real Estate and Infrastructure Pools generated a return of 1.5% for the Pension and 1.4% for the OPEB Plan for fiscal year 2024. The Real Estate and Infrastructure Pools compare performance with two benchmark returns from the National Council of Real Estate Investment Fiduciaries (NCREIF): the NCREIF Property Index (less 130 basis points) was (4.7)% and the NCREIF Fund Index - Open-End Diversified Core Equity (NFI-ODCE) was (8.0)%.

INVESTMENT SECTION

REPORT ON INVESTMENT ACTIVITY

At the close of fiscal year 2024, the Real Estate and Infrastructure Pools represented 7.2% of total investments. The following summarizes the System's 0.2% ownership share of the Real Estate and Infrastructure Pools at September 30, 2024:

Real Estate and Infrastructure Pools

(in thousands)

Real Estate Equities	\$	18,653
Infrastructure Equities		2,152
Total	\$	<u>20,805</u>

FIXED INCOME POOLS

The objective for investments made in the Fixed Income Pools is to meet or exceed the Bloomberg US Aggregate Bond Index over one, three, and five-year periods and market cycles. Another objective is to rank above median in a nationally recognized universe of managers possessing a similar duration and credit exposure. For fixed income sub-strategies, the objective return is to meet or exceed the most relevant Bloomberg benchmark index.

The pools invest in fixed income and related securities in a diversified portfolio of investment grade corporate issues, mortgage-backed and asset-backed securities, US Treasuries, Agencies, government sponsored enterprises and government guaranteed mortgages. The pools diversify its investments by allocating its strategies with consideration of credit risk. The goal is to build a portfolio of strategies that will provide excess returns relative to the blended benchmark while providing minimal tracking error to the index. At times a portion of the pools may be invested in exchange traded funds (ETFs) and fixed-income short-term securities with maturities of less than one year.

The System's Fixed Income Pools' total rate of return was 13.1% for the Pension and OPEB Plans for fiscal year 2024. This compared with 11.6% for the Bloomberg US Aggregate Bond Index.

At the close of fiscal year 2024, the Fixed Income Pools represented 19.1% of total investments. The following summarizes the System's 0.4% ownership share of the Fixed Income Pools at September 30, 2024:

Fixed Income Pools

(in thousands)

Short-Term Pooled Investments	\$	368
Fixed Income Securities		54,772
Accrued Interest		174
Total	\$	<u>55,314</u>

ABSOLUTE RETURN POOL

The primary investment objective of the Absolute Return Pool is to generate a rate of return that meets or exceeds T-bills by 400 basis points net of fees over a market cycle. Another objective is to exceed the appropriate HFRI Fund of Funds Conservative Index median net of fees over one, three, and five-year periods and a market cycle.

The Absolute Return Pool's rate of return for the fiscal year was 11.6% for the Pension and OPEB Plans versus the benchmark's 6.5%. At the close of fiscal year 2024, the Absolute Return Pool represented 8.2% of total investments. The following summarizes the System's 0.2% ownership share of the Absolute Return Pool at September 30, 2024:

Absolute Return Pool

(in thousands)

Equities	\$	23,806
Total	\$	<u>23,806</u>

INVESTMENT SECTION

REPORT ON INVESTMENT ACTIVITY

REAL RETURN AND OPPORTUNISTIC POOLS

The primary investment objective of the Real Return and Opportunistic Pools is to generate a rate of return that meets or exceeds the increase in the Consumer Price Index (CPI) by at least four percent (4.0%) annually net of fees over one, three, and five-year periods and a market cycle. Opportunistic investments are targeted to earn a return that exceeds the current actuarial assumed rate of return, with the overall Real Return and Opportunistic Pools' benchmark an equal blend between the two benchmarks. If a peer universe is available, the objective is to rank above median in a nationally recognized universe of managers possessing a similar style.

The Real Return and Opportunistic Pools' rate of return for the fiscal year was 8.2% for the Pension and OPEB Plans versus the benchmark's 6.8%.

At the close of fiscal year 2024, the Real Return and Opportunistic Pools represented 7.7% of total investments. The following summarizes the System's 0.2% ownership share of the Real Return and Opportunistic Pools at September 30, 2024:

Real Return and Opportunistic Pools

(in thousands)

Equities	\$ 22,403
Total	\$ 22,403

SHORT-TERM INVESTMENT POOLS

The objective of the Short-Term Investment Pools is to closely match the return performance of its benchmark, the 30 day Treasury bill. The Short-Term Investment Pools' rate of return for the fiscal year was 5.5% for the Pension Plan and 5.2% for the OPEB Plan versus the benchmark's 5.6%.

Potential areas of investment are:

- Obligations of the United States or its agencies.
- Banker's acceptances, commercial accounts, certificates of deposit or depository receipts.
- Repurchase agreements for the purchase of securities issued by the US government or its agencies.
- Commercial paper rated at the time of purchase within the two highest classifications established by not less than two national rating services as determined by the State Treasurer.
- Short duration investment grade corporate issues.

At the close of fiscal year 2024, the Short-Term Investment Pools represented 6.1% of total investments. The following summarizes the System's ownership share of the Short-Term Investment Pools at September 30, 2024:

Short-Term Investment Pools

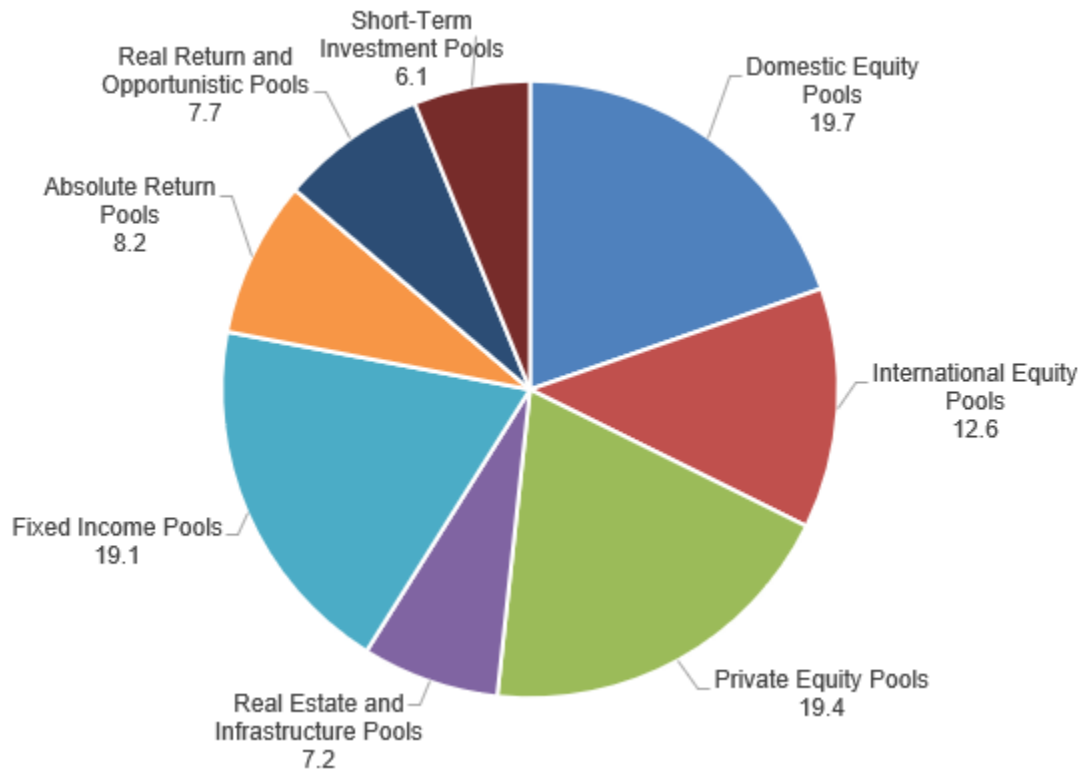
(in thousands)

Short-Term Pooled Investments	\$ 10,364
Fixed Income Securities	7,265
Accrued Interest	48
Total	\$ 17,679

INVESTMENT SECTION

REPORT ON INVESTMENT ACTIVITY

ASSET ALLOCATION – SECURITY TYPE ONLY



INVESTMENT SECTION

RATE OF RETURN ON INVESTMENTS

PENSION PLAN INVESTMENT RESULTS

For the Period Ending September 30, 2024

Investment Category	Annualized Rate of Return ¹			
	Current Year	3 Years	5 Years	10 Years
Total Portfolio	15.6 %	5.8 %	9.4 %	8.6 %
Domestic Equity Pools	40.2	10.7	14.8	12.7
S&P Composite 1500 Index	35.5	11.5	15.6	13.1
International Equity Pools	26.2	3.5	8.1	6.0
International Blended Benchmark ²	25.4	4.1	7.6	5.2
Private Equity Pools	4.4	3.8	12.6	11.9
Private Equity Benchmark ³	28.2	13.3	18.5	16.2
Real Estate and Infrastructure Pools	1.5	8.8	6.2	7.7
NCREIF Property Blended Index ⁴	(4.7)	(0.4)	1.9	4.5
Fixed Income Pools	13.1	0.5	1.6	3.1
Bloomberg US Aggregate Bond Index	11.6	(1.4)	0.3	1.8
Absolute Return Pool	11.6	7.7	8.2	5.9
HFRI Fund of Funds Conservative Aggregate Index	6.5	3.7	5.0	3.6
Real Return and Opportunistic Pools	8.2	7.9	10.6	9.9
Real Return and Opportunistic Benchmark ⁵	6.8	8.0	7.7	7.4
Short-Term Investment Pools	5.5	3.5	2.4	1.8
30-Day Treasury Bill	5.6	3.6	2.3	1.8

¹ Calculations used a time-weighted rate of return based on the market rate of return in accordance with industry standards. Excludes income and investment gains and losses from securities lending.

² As of 7/1/14, index is MSCI ACWI ex USA Net. History 10/1/10 to 6/30/14 is MSCI ACWI ex USA Gross. History 1/1/10 to 9/30/10 is S&P Developed BMI-EPAC Net 75/25. History prior to 1/1/10 is S&P Developed BMI-EPAC Net 50/50.

³ Index is blend of S&P 500 plus 300 bps with a three-month lag.

⁴ As of 10/1/05, index is NCREIF less 130 bp. History prior to 10/1/05 reflects NCREIF less 75 bp.

⁵ As of 12/1/18 Real Return Benchmark is CPI + 400 bps net. Opportunistic is current Actuarial Rate of Return. History prior to 12/1/18 reflects 50% (CPI + 5%) and 50% (actuarial rate 8%).

INVESTMENT SECTION

RATE OF RETURN ON INVESTMENTS

OPEB INVESTMENT RESULTS

For the Period Ending September 30, 2024

Investment Category	Annualized Rate of Return ¹			
	Current Year	3 Years	5 Years	10 Years
Total Portfolio	14.3 %	5.1 %	8.7 %	8.1 %
Domestic Equity Pools	40.2	10.8	14.9	12.6
S&P Composite 1500 Index	35.5	11.5	15.6	13.1
International Equity Pools	26.1	3.5	8.1	6.0
International Blended Benchmark ²	25.4	4.1	7.6	5.2
Private Equity Pools	4.4	3.8	12.6	11.9
Private Equity Benchmark ³	28.2	13.3	18.5	16.2
Real Estate and Infrastructure Pools	1.4	8.8	6.2	7.7
NCREIF Property Blended Index ⁴	(4.7)	(0.4)	1.9	4.5
Fixed Income Pools	13.1	0.5	1.6	3.1
Bloomberg US Aggregate Bond Index	11.6	(1.4)	0.3	1.8
Absolute Return Pools	11.6	7.7	8.2	5.9
HFRI Fund of Funds Conservative Aggregate Index	6.5	3.7	5.0	3.6
Real Return and Opportunistic Pools	8.2	7.9	10.6	9.9
Real Return and Opportunistic Benchmark ⁵	6.8	8.0	7.7	7.4
Short-Term Investment Pools	5.2	3.2	2.3	1.7
30-Day Treasury Bill	5.6	3.6	2.3	1.6

¹ Calculations used a time-weighted rate of return based on the market rate of return in accordance with industry standards. Excludes income and investment gains and losses from securities lending.

² As of 7/1/14, index is MSCI ACWI ex USA Net. History 10/1/10 to 6/30/14 is MSCI ACWI ex USA Gross. History 1/1/10 to 9/30/10 is S&P Developed BMI-EPAC Net 75/25. History prior to 1/1/10 is S&P Developed BMI-EPAC Net 50/50.

³ Index is blend of S&P 500 plus 300 bps with a three-month lag.

⁴ As of 10/1/05, index is NCREIF less 130 bp. History prior to 10/1/05 reflects NCREIF less 75 bp.

⁵ As of 12/1/18 Real Return Benchmark is CPI+4% + 400ps net. Opportunistic is current Actuarial Rate of Return. History prior to 12/1/18 reflects 50%(CP+5%) and 50% (actuarial rate 8%).

INVESTMENT SECTION

LARGEST ASSETS HELD

LARGEST STOCK HOLDINGS

(By Fair Value)
September 30, 2024

Rank	Shares	Stocks	Fair Value
1	23,549	Nvidia Corp.	\$ 2,859,755
2	6,388	Microsoft Corp.	2,748,910
3	11,722	Apple Inc.	2,731,150
4	8,087	Amazon.com Inc.	1,506,768
5	2,265	Meta Platforms Inc. Class A	1,296,703
6	46,902	AT&T Inc.	1,031,841
7	5,439	Alphabet Inc. CL A	902,034
8	4,405	Broadcom Inc.	759,804
9	752	Eli Lilly & Co.	665,952
10	3,929	Alphabet Inc. CL C	656,946

The System's investments are commingled in various pooled accounts. Amounts, par value and number of shares represent the System's pro-rata share based on its ownership of the investment pools.

LARGEST BOND HOLDINGS

(By Fair Value)
September 30, 2024

Rank	Par Amount	Bonds & Notes	Fair Value
1	1,682,465	US TREASURY N/B 4.25% 08/15/2054	\$1,717,954
2	1,623,053	US TREASURY N/B 4.375% 05/15/2034	1,699,894
3	2,057,089	US TREASURY N/B 2.875% 05/15/2052	1,611,038
4	1,646,450	FNMA TBA 30 YR 2 Single Family Mortgage	1,363,014
5	1,262,984	FNMA TBA 30 YR 6.5 Single Family Mortgage	1,301,410
6	1,242,890	FNMA TBA 30 YR 5.5 Single Family Mortgage	1,257,282
7	1,463,588	US TREASURY N/B 3.0% 08/15/2052	1,176,187
8	927,305	US TREASURY N/B 4.125% 11/15/2032	953,856
9	896,049	FNMA POOL MA5166 FN 10/53 Fixed 6%	915,975
10	857,873	FED HM LN PC POOL SD8447 FR 07/54 Fixed 6%	876,780

Largest Bond Holdings are exclusive of securities lending collateral.

The System's investments are commingled in various pooled accounts. Amounts, par value and number of shares represent the System's pro-rata share based on its ownership of the investment pools.

INVESTMENT SECTION

SCHEDULE OF INVESTMENT FEES

The State of Michigan Investment Board (Board) is the investment fiduciary and custodian of the System's funds pursuant to State law. Outside advisors are utilized to augment the State of Michigan's internal staff. 64.9% of the total investment portfolio is managed by fully discretionary outside advisors. The Michigan Department of Treasury's cost of operations applicable to the System for the fiscal year end amounted to \$60 thousand or five and nine tenths basis points (0.059%) of the fair value of the Assets under Management of the Board.

Investment Managers' Fees:	Assets Under Management (in thousands)	Fees (in thousands)	Basis Points*
State Treasurer	\$ 101,759	\$ 60	5.9
Outside Advisors for			
Fixed Income	30,354	63	20.8
Absolute Return	23,806	133	55.9
Real Return and Opportunistic	22,403	109	48.7
International Equity	28,559	70	24.5
Domestic Equity	5,774	14	24.2
Private Equity	56,354	451	80.0
Real Estate and Infrastructure	20,805	187	89.9
Total	\$ 289,814	\$ 1,087	
Other Investment Services Fees:			
Assets in Custody	\$ 282,768	\$ 40	
Securities Lending Collateral	13,870	7	

* Private Equity partnership agreements that define the management fees, the asset management fees range from 0 to 250 basis points of the committed capital. For Real Estate and Infrastructure, the asset management fees range from 12 to 150 basis points. For Absolute Return and Real Return and Opportunistic, the asset management fees range from 0 to 200 basis points. These fees, in most cases, are netted against income.

INVESTMENT SECTION

SCHEDULE OF INVESTMENT COMMISSIONS

Fiscal Year Ended September 30, 2024

Investment Brokerage Firms:	Actual Commissions Paid ¹	Actual Number of Shares Traded ¹	Average Commission Per Share ²	Estimated Trade Costs Per Share	Estimated Research Costs Per Share	Estimated Trade Costs	Estimated Research Costs
Bank of America Securities LLC	\$ 1	119	\$ 0.01	\$ 0.01	\$ -	\$ 1	\$ -
Broadcort	-	41	-	0.01	-	-	-
BTIG LLC	1,466	116,988	0.01	0.01	-	585	-
Capital Institutional Services Inc.	483	96,743	-	0.01	-	968	-
Citigroup Global Markets Inc.	-	35	-	0.01	-	-	-
Cowen & Company LLC	270	13,495	0.02	0.01	0.01	135	135
Drexel Hamilton LLC	51	10,181	0.01	0.01	-	102	-
J. P. Morgan Securities Inc.	621	31,106	0.02	0.01	0.01	311	311
Jefferies & Company	3	438	0.01	0.01	-	4	-
Merrill Lynch, Pierce, Fenner & Smith Inc.	53	2,263	0.02	0.01	0.01	23	23
Mischler Financial Group Inc.	45	2,230	0.02	0.01	0.01	22	22
MKM Partners LLC	1,036	59,212	0.02	0.01	0.01	592	592
Morgan Stanley & Co. Inc.	4	489	0.01	0.01	-	5	-
National Financial	1	168	0.01	0.01	-	2	-
Raymond James and Associates Inc.	67	2,685	0.02	0.01	0.01	27	28
RBC Capital Markets	4	587	0.01	0.01	-	6	-
Roberts & Ryan Inv.	78	3,923	0.02	0.01	0.01	40	40
Wayne & Company	1,478	283,411	0.01	0.01	-	1,417	-
Glen Eagle Wealth	15	1,474	0.01	0.01	-	15	1
Total	\$ 5,676	625,588	\$ 0.01	\$ 0.01	\$ -	\$ 4,255	\$ 1,152

¹ Commissions are included in purchase and sale prices of investments. The commissions and shares represent the System's pro-rata share based on ownership of commission and share transactions in the investment pools.

² The average commission per share for all brokerage firms.

INVESTMENT SECTION

INVESTMENT SUMMARY

Fiscal Year Ended September 30, 2024

	Fair Value¹	Percent of Total Fair Value	Investment & Interest Income²	Percent of Total Investment & Interest Income
Fixed Income Pools	\$ 55,314,204	19.1 %	\$ 4,880,145	11.7 %
Domestic Equity Pools	57,006,197	19.7	18,877,570	45.1
Real Estate and Infrastructure Pools	20,804,543	7.2	524,269	1.2
Private Equity Pools	56,354,227	19.4	2,499,775	6.0
International Equity Pools	36,447,867	12.6	8,728,126	20.9
Absolute Return Pools	23,806,203	8.2	3,100,270	7.4
Real Return and Opportunistic Pools	22,402,675	7.7	2,410,369	5.8
Short-Term Investment Pools	17,678,869 ³	6.1	804,268	1.9
Total	\$ 289,814,785	100.0 %	\$ 41,824,792	100.0 %

¹ Fair value excludes \$13,870,429 in securities lending collateral for fiscal year 2024.

² Total Investment & Interest Income excludes net security lending income of \$34,246 for securities lending collateral.

³ Short-Term Investment Pools' fair value includes \$7,047,211 of equity in common cash.

INVESTMENT SECTION

INVESTMENT SUMMARY

This page was intentionally left blank.

ACTUARIAL SECTION

Actuary's Certification
Summary of Actuarial Assumptions and Methods
Actuarial Valuation Data
Prioritized Solvency Test
Analysis of System Experience – Pension
Analysis of System Experience - OPEB
Summary of Plan Provisions
Schedules of Funding Progress

ACTUARIAL SECTION

ACTUARY'S CERTIFICATION



800.521.0498 | P: 248.799.9000 | www.grsconsulting.com

October 18, 2024

Ms. Michelle Lange, Director
Department of Technology, Management and Budget
and
The State of Michigan Retirement Board
P.O. Box 30171
Lansing, Michigan 48909

Ladies and Gentlemen:

The basic financial objective of the Michigan Judges' Retirement System (JRS) is to establish and receive contributions which when combined with present assets and future investment returns will be sufficient to meet the financial obligations of the System to present and future benefit recipients. The progress towards meeting those financial objectives is illustrated in the Schedules of Funding Progress and the Schedules of Employer Contributions.

We performed actuarial funding valuations and issued actuarial funding reports for the JRS pension and retiree health (i.e., OPEB) plans as of September 30, 2023. The purpose of the September 30, 2023 annual actuarial valuations was to determine the contribution requirements for the fiscal year ending September 30, 2024, to measure the System's funding progress and to provide information in connection with applicable Governmental Accounting Standards Board Statements. The valuations should not be relied upon for any other purpose. The valuation process develops employer contributions that are sufficient to fund the System's normal cost (i.e., the costs assigned by the valuation method to the year of service about to be rendered), as well as to fund any unfunded accrued liabilities over a reasonable period. The valuation was completed based upon population data, asset data and plan provisions in effect on September 30, 2023.

In addition to the funding valuation reports, separate reports are issued to provide financial reporting information for JRS in accordance with Governmental Accounting Standards Board (GASB) Statement Nos. 67 and 68 (pension benefits) and Nos. 74 and 75 (retiree health benefits, or OPEB). Reports containing the actuarial results of the financial reporting valuations are produced annually after the publication of this letter. The GASB Statement Nos. 67, 68, 74 and 75 financial reporting valuations are based upon a measurement date of September 30, 2024.

The valuations were based upon information provided by the System's administrative staff concerning System benefit provisions, financial transactions, and individual members, terminated members, retirees and beneficiaries. We checked the data for internal and year to year consistency, but did not audit the data. As a result, we do not assume responsibility for the accuracy or completeness of the data provided by the System's administrative staff. The actuary summarizes and tabulates population data in order to analyze long term trends. The System's auditor audits the actuarial data annually.

One Towne Square | Suite 800 | Southfield, Michigan 48076-3723

ACTUARIAL SECTION

ACTUARY'S CERTIFICATION

Ms. Michelle Lange
October 18, 2024
Page 2

Annual actuarial valuations are based upon assumptions regarding future activity in specific risk areas including the rate of investment return and payroll growth, eligibility for the various classes of benefits and longevity among retired lives. These assumptions are adopted by the Board and the Department after considering the advice of the actuary and other professionals. Each actuarial valuation takes into account all prior differences between actual and assumed experience in each risk area and adjusts the contribution requirements as needed.

The following schedules in the Financial Section, the Actuarial Section, and the Statistical Section of the Annual Comprehensive Financial Report (ACFR) were prepared by the Department of Financial Services based upon certain information presented in the previously mentioned funding and financial reporting valuation reports:

Financial Section

- Note 1 – Table of System's Membership
- Note 4 – Net Pension Liability; Summary of Actuarial Assumptions and Methods
- Note 5 – Net OPEB Liability; Summary of Actuarial Assumptions and Methods
- Note A – Methods and Assumptions Used to Determine Contributions for Fiscal Year 2024
- Schedules of Changes in the Net Pension Liability (NPL) and the Net OPEB Liability and Related Ratios
- Schedules of Contributions Multiyear
- Sensitivity of the NPL to Changes in the Discount Rate
- Sensitivity of the Net OPEB Liability to Changes in the Discount Rate
- Sensitivity of the Net OPEB Liability to Changes in the Healthcare Cost Trend Rate Assumption

Actuarial Section

- Summary of Actuarial Assumptions and Methods used in the September 30, 2023 Pension Funding Valuation
- Percent of Eligible Active Members Retiring Within Next Year
- Separation from Active Employment Before Age and Service Retirement, Disability and Individual Pay Increase Assumptions
- Schedule of Active Member Pension Valuation Data
- Schedule of Changes in the Retirement Rolls
- Prioritized Solvency Tests
- Analyses of System Experience
- Schedule of Active Member OPEB Valuation Data
- Schedule of Changes in the OPEB Rolls
- Schedules of Funding Progress

Statistical Section

- Schedule of Retired Members by Type of Retirement and Type of Pension Benefit
- Schedule of Retired Members by Type of Health Benefit
- Schedules of Average Benefit Payments – Pension, Medical/Rx, Dental, and Vision



ACTUARIAL SECTION

ACTUARY'S CERTIFICATION

Ms. Michelle Lange
October 18, 2024
Page 3

The September 30, 2023 funding valuations and the September 30, 2024 financial reporting valuations were based upon assumptions that were recommended in connection with a study of System experience covering the period from October 1, 2017 through September 30, 2022. Future actuarial measurements may differ significantly from those presented in the annual valuations due to such factors as experience differing from that anticipated by actuarial assumptions, or changes in plan provisions, actuarial assumptions/methods or applicable law. Due to the limited scope of the assignment, we did not perform an analysis of the potential range of future measurements.

The signing actuaries are independent of the plan sponsor.

The actuarial valuations of JRS were performed by qualified actuaries in accordance with standards of practice prescribed by the Actuarial Standards Board and in compliance with applicable State statutes. The assumptions and methods used for funding and financial reporting purposes are in conformity with the Actuarial Standards of Practice issued by the Actuarial Standards Board. Mita D. Drazilov and Louise M. Gates are Members of the American Academy of Actuaries (MAAA) and meet the Qualification Standards of the American Academy of Actuaries to render the actuarial opinions contained herein. It is our opinion that the calculated employer contribution meets the financial objective of the Retirement System.

Respectfully submitted,
Gabriel, Roeder, Smith & Company



Louise M. Gates, ASA, FCA, MAAA



Louise M. Gates, ASA, FCA, MAAA



ACTUARIAL SECTION

SUMMARY OF ACTUARIAL ASSUMPTIONS AND METHODS

1. The investment return rate used in the pension valuation was 6.00% per year net of investment expenses, compounded annually. This rate of return is not the assumed real rate of return. Considering a wage inflation assumption of 2.75%, this investment return rate translates to an assumed long-term real rate of return of 3.25%. Adopted 2021.
2. The healthy life retiree mortality tables used in evaluating allowances to be paid were 100% of the PubG-2010 Male and Female Healthy Annuitant Mortality Tables, adjusted for mortality improvements using projection scale MP-2021 from 2010. Adopted 2023.
3. Sample probabilities of retirement with an age and service allowance are shown in Schedule 1 on the next page. Adopted 2014.
4. Sample probabilities of withdrawal from service and disability, together with individual pay increase assumptions, are shown in Schedule 2 on the next page. Adopted 2010.
5. The active member population is closed to new hires. This will result in a gradual reduction in the total active member payroll over time.
6. An individual entry-age normal actuarial cost method of valuation was used in determining age and service and deferred retirement actuarial liabilities and normal cost. Unfunded actuarial accrued liabilities, including actuarial gains and losses, are financed over a declining 40-year period beginning October 1, 1996. Adopted 1996.
7. The Department of Technology, Management and Budget approved the use of market value of assets as of September 30, 1997 for actuarial valuation purposes. For investment gains or losses that occur after that date, a 5-year smoothing technique will be used. Specifically, the excess (shortfall) of actual investment income (including interest, dividends, realized and unrealized gains or losses) over the imputed-income at the valuation interest rate is considered the gain (loss), which is spread over five years. Adopted 1997.
8. The data about persons now covered and about present assets was furnished by the System's administrative staff. Although examined for general reasonableness, the data was not audited by the actuary.
9. The actuarial valuation computations were made by or under the supervision of a Member of the American Academy of Actuaries (MAAA). The assumptions used in the actuarial valuations were adopted by the System's Board and the Department of Technology, Management and Budget after consulting with the State Treasurer and the actuary.
10. A 5-year experience investigation, covering the period from October 1, 2012 through September 30, 2017 was completed in 2018. The purpose of the study was to analyze the actual experience of the System versus that anticipated by actuarial assumptions then in use.
11. Gabriel, Roeder, Smith & Company was awarded the actuarial and consulting services contract beginning October 4, 2006.

ACTUARIAL SECTION

SUMMARY OF ACTUARIAL ASSUMPTIONS AND METHODS

SCHEDULE 1

PERCENT OF ELIGIBLE ACTIVE MEMBERS RETIRING WITHIN NEXT YEAR

Retirement Ages	Percent of Eligible Active Members Retiring Within Next Year
55-60	10 %
61-64	8
65-69	15
70	20
71	25
72-74	30
75	100

SCHEDULE 2

SEPARATION FROM ACTIVE EMPLOYMENT BEFORE AGE & SERVICE RETIREMENT, DISABILITY & INDIVIDUAL PAY INCREASE ASSUMPTIONS

Sample Ages	Percent of Active Members Withdrawing Within Next Year	Percent of Active Members Becoming Disabled Within Next Year	Percent Increase in Pay During Next Year
30 and under	- %	- %	3.25 %
35	2.25	0.02	3.25
40	2.25	0.06	3.25
45	2.25	0.12	3.25
50	2.25	0.18	3.25
55	2.25	0.24	3.25
60	2.25	0.36	3.25

ACTUARIAL SECTION

SCHEDULES OF ACTIVE MEMBER VALUATION DATA

SCHEDULE OF ACTIVE MEMBER PENSION VALUATION DATA

Valuation Date Sept. 30	Number Inactive	Number Active	Reported Annual Payroll	Average Annual Pay	Increase (Decrease)	Average Age	Average Service
2014	7	154	\$ 17,813,758	\$ 115,674	0.2 %	63.8	23.0
2015	6	128	14,948,393	116,784	1.0	63.9	23.9
2016	4	119	13,903,660	116,837	-	64.8	25.1
2017	1	100	11,955,042	119,550	2.3	65.4	25.7
2018	0	95	11,732,875	123,504	3.3	66.3	26.7
2019	0	75	9,474,528	126,327	2.3	66.7	27.3
2020	0	71	9,148,954	128,859	2.0	67.6	28.4
2021	0	53	7,010,285	132,270	2.6	67.6	29.1
2022	0	43	5,923,421	137,754	4.1	68.3	30.1
2023	0	30	4,438,453	147,948	7.4	67.8	30.6

SCHEDULE OF ACTIVE MEMBER OPEB VALUATION DATA

Valuation Date Sept. 30	Number Active	Reported Annual Payroll	Average Annual Pay	Increase (Decrease)	Average Age	Average Service
2014	40	\$ 6,079,984	\$ 152,000	0.5 %	60.3	17.3
2015	39	5,926,177	151,953	-	59.8	16.8
2016	39	5,888,807	150,995	(0.6)	60.3	17.6
2017	39	5,918,042	151,745	0.5	60.1	17.7
2018	38	5,837,438	153,617	1.2	60.0	17.0
2019	37	5,792,420	156,552	1.9	58.3	15.0
2020	37	5,827,608	157,503	0.6	59.0	15.6
2021	35	5,605,560	160,159	1.7	58.6	15.0
2022	37	5,843,107	157,922	(1.4)	57.8	13.7
2023	37	6,553,793	177,130	12.2	57.6	13.2

ACTUARIAL SECTION

SCHEDULES OF ACTIVE MEMBER VALUATION DATA

SCHEDULE OF CHANGES IN RETIREMENT ROLLS

Year Ended Sept. 30	Added to Rolls		Removed from Rolls		Rolls – End of Year		Average Annual	Change in Annual
	No.	Annual Allowances	No.	Annual Allowances	No.	Annual Allowances	Allowances	Allowances
2014	29	\$ 1,236,656	29	\$ 1,113,996	554	\$ 22,426,801	\$ 40,482	0.5 %
2015	40	1,996,792	34	1,075,366	560	23,348,227	41,693	4.1
2016	22	951,076	35	1,263,957	547	23,035,359	42,112	(1.3)
2017	34	1,595,337	30	996,300	551	23,634,396	42,894	2.6
2018	17	610,404	24	714,245	544	23,530,555	43,255	(0.4)
2019	27	1,598,176	25	863,088	546	24,265,643	44,443	3.1
2020	11	516,322	29	905,646	528	23,876,319	45,220	(1.6)
2021	26	1,612,773	29	1,186,583	525	24,302,509	46,290	1.8
2022	18	1,000,682	27	1,079,950	516	24,223,241	46,944	(0.3)
2023	23	1,320,466	21	738,672	518	24,805,035	47,886	2.4

SCHEDULE OF CHANGES IN THE OPEB ROLLS

Year Ended Sept. 30	Added to Rolls		Removed from Rolls		Rolls – End of Year		Average Annual	Change in Annual
	No.	Annual Allowances ¹	No.	Annual Allowances ¹	No.	Annual Allowances ¹	Allowances	Allowances
2014	3	\$ 25,453	2	\$ 18,483	31	\$ 218,663	\$ 7,054	3.3 %
2015	5	50,874	1	9,241	35	260,296	7,437	19.0
2016	2	48,243	2	17,130	35	291,409	8,326	-
2017	1	26,382	4	20,331	32	297,460	9,296	2.1
2018	1	15,959	2	16,468	31	296,951	9,579	(0.2)
2019	3	24,597	3	47,366	31	274,182	8,845	(7.7)
2020	1	17,880	1	15,248	31	276,814	8,929	1.0
2021	2	25,492	3	17,778	30	284,528	9,484	2.8
2022	3	25,418	3	48,108	30	261,838	8,728	(8.0)
2023	1	11,308	1	10,783	30	262,363	8,745	0.2

¹ Based on the illustrative premiums reported for the indicated valuation.

Notes:

No. refers to number of retiree health contracts for individuals participating in the defined benefit pension plan and receiving the State subsidy.

Annual allowances added to rolls includes increases due to medical inflation and contract changes.

Annual allowances removed from rolls includes decreases due to contract changes.

ACTUARIAL SECTION

PRIORITIZED SOLVENCY TEST

The System's funding objective is to meet long-term benefit promises through contributions that remain approximately level from year to year as a percent of member payroll. If the contributions to the System are level in concept and soundly executed, the System will pay all promised benefits when due, the ultimate test of financial soundness. Testing for level contribution rates is the long-term solvency test.

A prioritized solvency test is another means of checking a system's progress under its funding program. In a short condition test, the plan's present assets (cash and investments) are compared with: (1) active member contributions on deposit; (2) the liabilities for future benefits to present retired lives; and (3) the liabilities for service already rendered by active and inactive members. In a system that has been following the discipline of level percent of payroll financing, the liabilities for active member contributions on deposit (liability 1) and the liabilities for future benefits to present retired lives (liability 2) will be fully covered by present assets (except in rare circumstances). In addition, the liabilities for service already rendered by active members (liability 3) are normally partially covered by the remainder of present assets. Generally, if the System has been using level-cost financing, the funded portion of liability 3 will increase over time. Liability 3 being fully funded is not necessarily a by-product of level percent of payroll funding methods.

The schedules that follow illustrate the history of the liabilities of the System and are indicative of the System's policy of following the discipline of level percent of payroll financing.

PENSION BENEFITS

(in thousands)

Valuation Date	Actuarial Accrued Liability (AAL)			Valuation Assets	Portion of AAL Covered by Assets			
	(1)	(2)	(3)		(1)	(2)	(3)	(4) ²
	Active Member Contributions	Retirants and Beneficiaries	Active and Inactive Members (Employer Financed Portion)					
Sept. 30								
2014	\$ 49,317	\$ 180,888	\$ 22,278	\$ 246,421	100 %	100 %	72.8%	97.6%
2014 ¹	49,317	186,279	21,709	246,421	100	100	49.9	95.8
2015	44,691	196,275	16,281	249,333	100	100	51.4	96.9
2016	45,617	193,368	12,364	254,067	100	100	122.0	101.1
2017	40,701	197,767	9,117	267,850	100	100	322.3	108.2
2017 ¹	40,701	215,771	13,271	267,850	100	100	85.7	99.3
2018	41,809	211,958	11,968	266,347	100	100	105.1	100.2
2018 ¹	41,809	222,484	16,630	274,801	100	100	63.2	97.8
2019	34,987	229,371	12,209	266,449	100	100	17.1	96.3
2020	36,121	223,119	10,274	259,433	100	100	1.9	96.3
2021	29,059	225,288	7,205	262,304	100	100	110.4	100.3
2021 ¹	29,059	229,474	7,821	267,151	100	100	110.2	100.3
2022	24,181	225,666	7,355	262,234	100	100	168.4	102.0
2023	17,596	229,794	5,907	257,419	100	100	169.8	101.6
2023 ¹	17,596	232,575	6,416	257,419	100	100	113.0	100.3

¹ Revised actuarial assumptions and/or methods.

² Percent funded on a total valuation asset and total actuarial accrued liability basis.

ACTUARIAL SECTION

PRIORITIZED SOLVENCY TEST

OTHER POSTEMPLOYMENT BENEFITS

(in thousands)

Valuation Date Sept. 30	Actuarial Accrued Liability (AAL)			Valuation Assets	Portion of Present Value Covered by Assets			
	(1)	(2)	(3)		(1)	(2)	(3)	(4) ¹
	Active Member Contributions ³	Retirants and Beneficiaries	Active and Inactive Members (Employer Financed Portion)					
2014	\$ -	\$ 3,053	\$ 5,612	\$ -	- %	- %	- %	- %
2015	-	4,384	4,742	-	-	-	-	-
2016	-	4,836	5,093	1,030	-	21.1	-	10.4
2017	-	3,465	3,432	1,026	-	29.6	-	14.9
2017 ²	-	3,721	3,772	1,026	-	27.6	-	13.7
2018	-	3,714	3,883	1,105	-	29.8	-	14.5
2018 ²	-	3,976	4,450	1,105	-	27.8	-	13.1
2019	-	4,147	5,729	8,375	-	100.0	73.8	84.8
2020	-	3,866	5,364	9,332	-	100.0	101.9	101.1
2021	-	3,156	4,165	10,508	-	100.0	176.5	143.5
2021 ²	-	3,425	4,646	11,345	-	100.0	170.5	140.6
2022	-	2,717	4,008	12,239	-	100.0	237.6	182.0
2023	-	2,856	3,950	12,941	-	100.0	255.3	190.2
2023 ²	-	2,985	4,161	12,941	-	100.0	239.3	181.1

¹ Percent funded on a total valuation asset and total actuarial accrued liability basis.

² Revised actuarial assumptions and/or methods.

³ Information not available.

ACTUARIAL SECTION

ANALYSIS OF SYSTEM EXPERIENCE – PENSION

GAINS/(LOSSES) IN ACCRUED LIABILITIES

During Year Ended September 30, 2023
Resulting from Differences Between Assumed Experience & Actual Experience

<u>Type of Activity</u>	<u>Gain/(Loss)</u>
1. Retirements (including Disability Retirement). If members retire at older ages or with lower final average pay than assumed, there is a gain. If younger ages or higher average pays, a loss.	\$ (154,140)
2. Withdrawal from Employment (including death-in-service). If more liabilities are released by withdrawals and deaths than assumed, there is a gain. If smaller releases, a loss.	(11,720)
3. Pay Increases. If there are smaller pay increases than assumed, there is a gain. If greater increases, a loss.	(801,762)
4. Investment Income. If there is greater investment income than assumed, there is a gain. If less income, a loss.	3,783,146
5. Death After Retirement. If retirants live longer than assumed, there is a loss. If not as long, a gain.	(2,267,033)
6. Rehires. Rehires into the System will generally result in an actuarial loss.	-
7. Other. Miscellaneous gains and losses resulting from data adjustments, timing of financial transactions, etc.	(1,735,290)
8. Composite Gain (or Loss) During Year.	<u>\$ (1,186,799)</u>

ACTUARIAL SECTION

ANALYSIS OF SYSTEM EXPERIENCE – OPEB

GAINS/(LOSSES) IN ACCRUED LIABILITIES

During Year Ended September 30, 2023

Resulting from Differences Between Assumed Experience & Actual Experience

<u>Type of Activity</u>	<u>Gain/(Loss)</u>
1. Premiums. Gains and losses resulting from actual premiums in valuation year versus that assumed from prior valuation.	\$ 387,635
2. Investment Income. If there is greater investment income than assumed, there is a gain. If less income, a loss.	(133,029)
3. Demographic and Other. Gains and losses resulting from demographic experience, data adjustments, timing of financial transactions, etc.	225,977
4. Composite Gain (or Loss) During Year.	<u>\$ 480,583</u>

ACTUARIAL SECTION

SUMMARY OF PLAN PROVISIONS

Our actuarial valuation of the System as of September 30, 2023, is based on the present provisions of the Judges' Retirement Act (Public Act No. 234 of 1992, as amended).

REGULAR RETIREMENT

- **Eligibility** – Age 60 with 8 years credited service; or age 55 with 18 years credited service, or 25 years with no age requirement.
- **Annual Amount** – If less than 12 years of credited service, 3% of final annual compensation times years of credited service; for 12 or more years of credited service, 50% of final annual compensation plus 2.5% of such compensation for each year of credited service in excess of 12 years to a maximum of 60%. Former System members receive 3% of final annual compensation times years of credited service to a maximum of the greater of 40% of final annual compensation or \$15,000, but not to exceed 66.67% of final annual compensation when added to a local retirement system benefit; or 3.5% of final annual compensation times years of credited service to a maximum of 66.67% of final annual compensation if elected.
- **Final Annual Compensation** – Annual state salary at time of retirement plus state salary standardization, if any. For former Probate System members, final annual compensation is member's certified salary at time of retirement. For 36th District Court judges, final annual compensation is total state and district control unit salary at time of retirement. For Probate judges serving in a single county of less than 15,000 population, final annual compensation is total judicial salary at the time of retirement.

EARLY RETIREMENT

(Age Reduction Factor Used)

- **Eligibility** – Age 55 with 12 but less than 18 years credited service.
- **Annual Amount** – Regular retirement benefit, reduced by 0.5% for each month by which the commencement age is less than 60.

DEFERRED RETIREMENT

(Vested benefit)

- **Eligibility** – 8 years of credited service.
- **Annual Amount** – Regular retirement benefit. If less than 12 years of credited service, payable at age 60, if 18 or more years of credited service payable at age 55; if more than 12 but less than 18 years of credited service reduced amount payable at age 55.

DISABILITY RETIREMENT

- **Eligibility** – 8 years of credited service.
- **Annual Amount** – Regular retirement benefit, based upon member's credited service and final salary at time of disability.

DEATH BEFORE OR AFTER RETIREMENT

(Spouse or Dependent Children)

- **Eligibility** – 8 years of credited service.
- **Annual Amount** – 50% of member's accrued pension

POST RETIREMENT COST-OF-LIVING ADJUSTMENTS

None, except that judges who were active judges prior to September 8, 1961, (and their survivors) have their benefits adjusted as active judges' salaries change.

ACTUARIAL SECTION

SUMMARY OF PLAN PROVISIONS

MEMBER CONTRIBUTIONS

- **Non-Trial Judges** – 5% of salary (2% for health benefits)
- **Trial Judges with Full Standardization** – 7% of salary
- **Trial Judges without Full Standardization** – 3.5% of salary
- **Probate Judges under 3% Formula** – 7% of salary to maximum of \$980
- **Probate Judges under 3.5% Formula** – 7% of salary (no maximum)
- **District Court Judges of the Thirty-sixth District** – 3.5% of salary

DEFINED CONTRIBUTION LEGISLATION – (PUBLIC ACT 523 OF 1996)

New employees hired on or after March 31, 1997, become participants in Tier 2 (i.e., a defined contribution plan) rather than Tier 1 (i.e., the defined benefit plan described on prior page).

Active members on March 30, 1997, had an opportunity to irrevocably elect to terminate membership in Tier 1 and become participants in Tier 2. Elections were in writing and submitted between January 2, 1998, and April 30, 1998. Such members became Tier 2 participants on June 1, 1998, and had the actuarial present value of their Tier 1 accrued benefit transferred into Tier 2 by September 30, 1998.

ACTUARIAL SECTION

SCHEDULES OF FUNDING PROGRESS

SCHEDULE OF FUNDING PROGRESS – PENSION BENEFITS

(in millions)

Valuation Date Sept 30	Actuarial Value of Assets (a)	Actuarial Accrued Liability (AAL) Entry Age (b)	Unfunded (Overfunded) Accrued Liability (UAAL) (b-a)	Funded Ratio (a/b)	Covered Payroll (c)	UAAL as a % of Covered Payroll ((b-a)/c)
2014	\$ 246.4	\$ 257.3	\$ 10.9	95.8 %	\$ 17.8	61.1 %
2015	249.3	257.2	7.9	96.9	14.9	52.9
2016	254.1	251.3	(2.7)	101.1	13.9	(19.5)
2017	267.8	247.6	(20.3)	108.2	12.0	(169.5)
2017 ¹	267.8	269.7	1.9	99.3	12.0	15.8
2018	266.3	265.7	(0.6)	100.2	11.7	(5.2)
2018 ¹	274.8	280.1	6.1	97.8	11.7	52.2
2019	266.4	276.6	10.1	96.3	9.5	106.8
2020	259.4	269.5	10.1	96.3	9.1	110.2
2021	262.3	261.6	(0.8)	100.3	7.0	(10.7)
2021 ¹	267.2	266.4	(0.8)	100.3	7.0	(11.4)
2022	262.2	257.2	(5.0)	102.0	5.9	(84.9)
2023	257.4	253.3	(4.1)	101.6	4.4	(92.9)
2023 ¹	257.4	256.6	(0.8)	100.3	4.4	(18.7)

¹ Revised actuarial assumptions and/or methods.

Source: Gabriel, Roeder, Smith & Co.

SCHEDULE OF FUNDING PROGRESS – OTHER POSTEMPLOYMENT BENEFITS

(in millions)

Valuation Date Sept 30	Actuarial Value of Assets (a)	Actuarial Accrued Liability (AAL) Entry Age (b)	Unfunded (Overfunded) Accrued Liability (UAAL) (b-a)	Funded Ratio (a/b)	Covered Payroll (c)	UAAL as a % of Covered Payroll ((b-a)/c)
2014	\$ -	\$ 8.7	\$ 8.7	- %	\$ 6.1	142.5 %
2015	-	9.1	9.1	-	5.9	154.0
2016	1.0	9.9	8.9	10.4	5.9	151.1
2017	1.0	7.2	6.1	14.3	5.9	103.6
2017 ¹	1.0	7.5	6.5	13.7	5.9	109.3
2018	1.1	7.6	6.5	14.5	5.8	111.2
2018 ¹	1.1	8.4	7.3	13.1	5.8	125.4
2019	8.4	9.9	1.5	84.8	5.8	25.9
2020	9.3	9.2	(0.1)	101.1	5.8	(1.8)
2021	10.5	7.3	(3.2)	143.5	5.6	(56.9)
2021 ¹	11.3	8.1	(3.3)	140.6	5.6	(58.4)
2022	12.2	6.7	(5.5)	182.0	5.8	(94.4)
2023	12.9	6.8	(6.1)	190.2	6.6	(93.6)
2023 ¹	12.9	7.1	(5.8)	181.1	6.6	(88.4)

¹ Change in assumptions shown for years where assumptions other than the trend assumption have changed.

Source: Gabriel, Roeder, Smith, & Co.

ACTUARIAL SECTION

SCHEDULES OF FUNDING PROGRESS

This page was intentionally left blank.

STATISTICAL SECTION

Contents

Schedules of Additions by Source
Schedules of Deductions by Type
Schedules of Changes in Fiduciary Net Position
Schedules of Benefits and Refunds by Type
Schedules of Retired Members by Type of Benefit
Schedule of Other Postemployment Benefits
Schedules of Average Benefit Payments
Schedule of Principal Participating Courts
Ten Year History of Membership
Schedule of Participating Courts

STATISTICAL SECTION

CONTENTS

This part of the System's annual comprehensive financial report presents detailed information as a context for understanding what the information in the financial statements, note disclosures, and required supplementary information says about the System's overall financial health.

FINANCIAL TRENDS

These schedules contain trend information to help the reader understand how the System's financial performance and fiscal health has changed over time. The schedules are presented for the last ten fiscal years. Schedules included are:

- Schedule of Pension Plan Additions by Source
- Schedule of OPEB Plan Additions by Source
- Schedule of Pension Plan Deductions by Type
- Schedule of OPEB Plan Deductions by Type
- Schedule of Changes in Fiduciary Net Position – Pension Plan
- Schedule of Changes in Fiduciary Net Position – OPEB Plan
- Schedule of Pension Benefit and Refunds by Type
- Schedule of Other Postemployment Benefits and Refunds by Type

OPERATING INFORMATION

These schedules contain contextual information to assist the reader's understanding of how the System's financial information relates to the combination of participating members and the benefits it provides. Schedules are presented for the last ten fiscal years, except where noted. Schedules included are:

- Schedule of Retired Members by Type of Pension Benefits
- Schedule of Retired Members by Type of Other Postemployment Benefits
- Schedule of Other Postemployment Benefits
- Schedule of Average Benefit Payments – Pension
- Schedule of Average Benefit Payments – OPEB
- Schedule of Principal Participating Courts
- Ten Year History of Membership
- Schedule of Participating Courts

STATISTICAL SECTION

SCHEDULES OF ADDITIONS BY SOURCE

SCHEDULE OF PENSION PLAN ADDITIONS BY SOURCE

Last Ten Years

Fiscal Year Ended Sept. 30	Member Contributions	Employer Contributions	Net Investment & Other Income (Loss)	Total
2015	\$ 902,078	\$ 2,592,536	\$ 5,884,697	\$ 9,379,312
2016	805,452	2,138,379	18,481,767	21,425,599
2017	697,444	1,019,814	32,268,247	33,985,506
2018	653,414	1,736,417	28,281,200	30,671,032
2019	566,234	2,827,661	13,038,437	16,432,333
2020	500,206	2,840,119	12,933,970	16,274,296
2021	414,543	2,849,923	66,635,405	69,899,872
2022	359,130	1,517,097	(12,899,176)	(11,022,949)
2023	253,647	1,274,198	21,198,331	22,726,176
2024	221,986	1,005,350	38,924,698	40,152,034

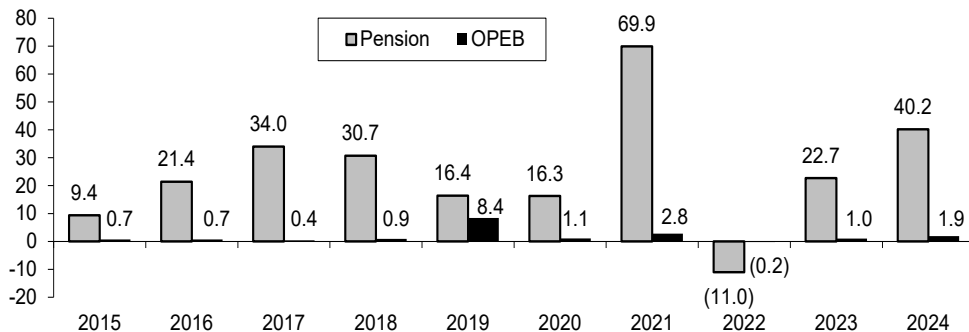
SCHEDULE OF OPEB PLAN ADDITIONS BY SOURCE

Last Ten Years

Fiscal Year Ended Sept. 30	Member Contributions	Employer Contributions	Net Investment & Other Income (Loss)	Total
2015	\$ 434,377	\$ 210,000	\$ 82,806	\$ 727,182
2016	432,494	154,000	149,635	736,128
2017	116,511	115,000	193,392	424,903
2018	112,892	539,300	218,026	870,217
2019	101,821	7,557,353	731,729	8,390,903
2020	133,374	398,154	539,992	1,071,520
2021	108,016	216,165	2,440,396	2,764,577
2022	124,819	241,689	(610,631)	(244,123)
2023	115,406	-	876,866	992,272
2024	104,916	-	1,830,723	1,935,639

TOTAL ADDITIONS

Year Ended September 30
(in millions)



STATISTICAL SECTION

SCHEDULES OF DEDUCTIONS BY TYPE

SCHEDULE OF PENSION PLAN DEDUCTIONS BY TYPE

Last Ten Years

Fiscal Year Ended Sept. 30	Benefit Payments	Refunds and Transfers	Administrative and Other Expenses	Total
2015	\$ 23,241,431	\$ -	\$ 312,400	\$ 23,553,832
2016	23,301,601	-	335,384	23,636,985
2017	23,724,056	-	353,994	24,078,050
2018	23,816,805	141,585	413,701	24,372,091
2019	24,111,344	-	376,191	24,487,534
2020	24,250,596	-	387,432	24,638,029
2021	24,280,660	-	375,789	24,656,449
2022	24,354,812	-	332,916	24,687,728
2023	24,795,840	-	355,738	25,151,577
2024	24,834,930	1,083,353	328,770	26,247,053

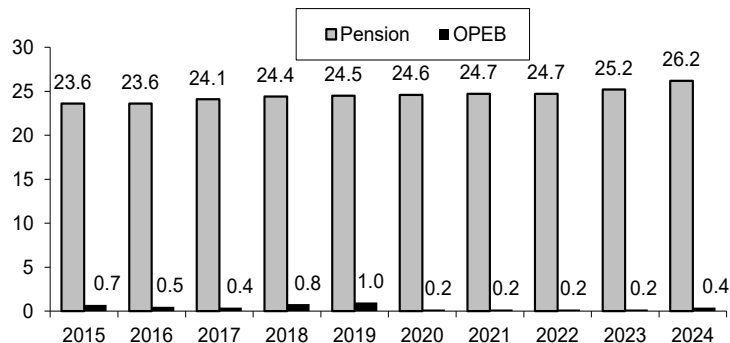
SCHEDULE OF OPEB PLAN DEDUCTIONS BY TYPE

Last Ten Years

Fiscal Year Ended Sept. 30	Benefit Payments	Refunds and Transfers	Uncollectible Receivable	Administrative and Other Expenses	Total
2015	\$ 600,781	\$ 348	\$ -	\$ 112,910	\$ 714,039
2016	459,119	50	-	84,032	543,200
2017	301,555	-	-	127,479	429,034
2018	719,565	800	-	120,761	841,126
2019	940,224	951	-	99,398	1,040,573
2020	136,516	-	-	88,302	224,819
2021	83,364	702	45,102	104,764	233,932
2022	56,064	8,213	-	92,145	156,422
2023	173,799	-	-	70,534	244,333
2024	289,962	856	-	75,701	366,519

TOTAL DEDUCTIONS

Year Ended September 30
(in millions)



STATISTICAL SECTION

SCHEDULES OF DEDUCTIONS BY TYPE

This page was intentionally left blank.

STATISTICAL SECTION

SCHEDULES OF CHANGES IN FIDUCIARY NET POSITION

SCHEDULE OF CHANGES IN FIDUCIARY NET POSITION – PENSION PLAN

Last Ten Years
(in thousands)

	Fiscal Year				
	2015	2016	2017	2018	2019
Member contributions	\$ 902	\$ 805	\$ 697	\$ 653	\$ 566
Employer contributions	2,593	2,138	1,020	1,736	2,828
Net investment income (loss)	5,840	18,425	32,218	28,280	13,036
Court fees	41	41	41	-	-
Miscellaneous income	3	15	10	1	2
Total Additions	<u>9,379</u>	<u>21,426</u>	<u>33,986</u>	<u>30,671</u>	<u>16,432</u>
Retirement benefits	23,241	23,302	23,724	23,817	24,111
Refunds of contributions	-	-	-	142	-
Administrative and other expenses	312	335	354	414	376
Total Deductions	<u>23,552</u>	<u>23,637</u>	<u>24,078</u>	<u>24,372</u>	<u>24,488</u>
Change in net position	<u>\$ (14,175)</u>	<u>\$ (2,211)</u>	<u>\$ 9,907</u>	<u>\$ 6,299</u>	<u>\$ (8,055)</u>

SCHEDULE OF CHANGES IN FIDUCIARY NET POSITION – OPEB PLAN

Last Ten Years
(in thousands)

	Fiscal Year				
	2015	2016	2017	2018	2019
Member contributions	\$ 434	\$ 432	\$ 117	\$ 113	\$ 102
Employer contributions	210	154	115	539	7,557
Other governmental contributions	-	93	74	114	327
Net investment income (loss)	65	56	119	104	404
Court fees	18	-	-	-	-
Other non-operating revenue	-	-	-	-	-
Miscellaneous income	-	1	-	-	-
Total Additions	<u>727</u>	<u>736</u>	<u>425</u>	<u>870</u>	<u>8,391</u>
Health benefits	601	459	302	720	940
Refunds of contributions	-	-	-	1	1
Uncollectible receivable	-	-	-	-	-
Administrative and other expenses	113	84	127	121	99
Total Deductions	<u>714</u>	<u>543</u>	<u>429</u>	<u>841</u>	<u>1,041</u>
Change in net position	<u>\$ 13</u>	<u>\$ 193</u>	<u>\$ (4)</u>	<u>\$ 29</u>	<u>\$ 7,350</u>

STATISTICAL SECTION

SCHEDULES OF CHANGES IN FIDUCIARY NET POSITION

	Fiscal Year (continued)				
	2020	2021	2022	2023	2024
Member contributions	\$ 500	\$ 415	\$ 359	\$ 254	\$ 222
Employer contributions	2,840	2,850	1,517	1,274	1,005
Net investment income (loss)	12,933	66,635	(12,900)	21,198	38,924
Court fees	-	-	-	-	-
Miscellaneous income	1	-	-	1	-
Total additions	<u>16,274</u>	<u>69,900</u>	<u>(11,024)</u>	<u>22,727</u>	<u>40,152</u>
Retirement benefits	24,251	24,281	24,355	24,796	24,835
Refunds of contributions	-	-	-	-	1,083
Administrative and other expenses	387	376	333	356	329
Total deductions	<u>24,638</u>	<u>24,656</u>	<u>24,688</u>	<u>25,152</u>	<u>26,247</u>
Change in net position	<u>\$ (8,364)</u>	<u>\$ 45,243</u>	<u>\$ (35,711)</u>	<u>\$ (2,425)</u>	<u>\$ 13,905</u>

	Fiscal Year (continued)				
	2020	2021	2022	2023	2024
Member contributions	\$ 133	\$ 108	\$ 125	\$ 115	\$ 105
Employer contributions	398	216	242	-	-
Other governmental contributions	55	103	141	180	245
Net investment income (loss)	468	2,325	(614)	830	1,817
Court fees	-	-	-	-	-
Other non-operating revenue	-	-	-	42	-
Miscellaneous income	18	12	3	4	14
Total Additions	<u>1,072</u>	<u>2,765</u>	<u>(103)</u>	<u>1,172</u>	<u>2,180</u>
Health benefits	137	83	56	174	290
Refunds of contributions	-	1	8	-	1
Uncollectible receivable	-	45	-	-	-
Administrative and other expenses	88	105	92	71	76
Total Deductions	<u>225</u>	<u>234</u>	<u>156</u>	<u>244</u>	<u>367</u>
Change in net position	<u>\$ 847</u>	<u>\$ 2,531</u>	<u>\$ (259)</u>	<u>\$ 928</u>	<u>\$ 1,814</u>

STATISTICAL SECTION

SCHEDULES OF BENEFITS AND REFUNDS BY TYPE

SCHEDULE OF PENSION BENEFITS AND REFUNDS BY TYPE

Last Ten Years

Fiscal Year Ended Sept. 30	Regular Benefits	Disability Benefits	Survivor Benefits	Refunds		Total
				Employee Contribution	Retired Benefits	
2015	\$ 18,517,601	\$ 211,479	\$ 4,512,352	\$ -	\$ -	\$ 23,241,432
2016	18,731,864	211,078	4,358,660	-	-	23,301,601
2017	19,290,587	212,964	4,220,505	-	-	23,724,056
2018	19,340,453	211,078	4,265,275	141,585	-	23,958,390
2019	19,708,925	211,078	4,191,341	-	-	24,111,344
2020	19,870,735	211,078	4,168,784	-	-	24,250,596
2021	20,036,577	211,078	4,033,005	-	-	24,280,660
2022	19,951,739	211,078	4,191,995	-	-	24,354,812
2023	20,331,882	211,078	4,252,880	-	-	24,795,840
2024	20,373,557	211,078	4,250,296	1,083,353	-	25,918,284

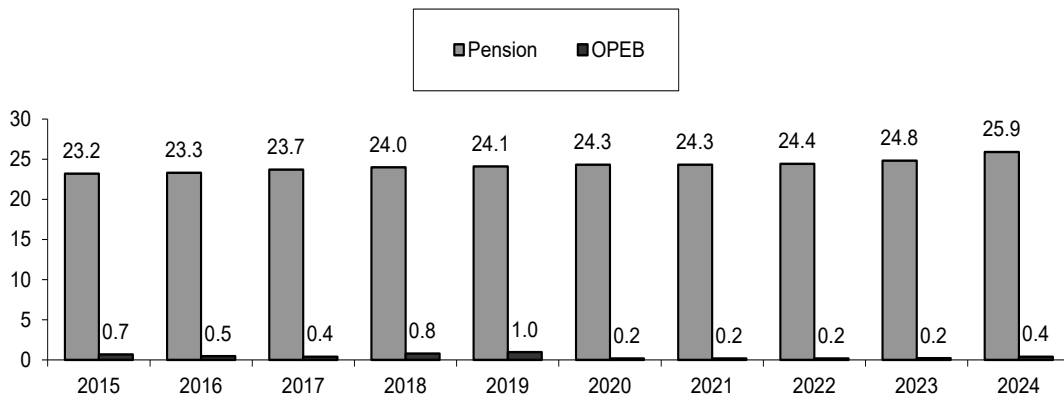
SCHEDULE OF OTHER POSTEMPLOYMENT BENEFITS AND REFUNDS BY TYPE

Last Ten Years

Fiscal Year Ended Sept. 30	Health Benefits	Dental Benefits	Vision Benefits	Health Refunds	Uncollectible Receivable	Administrative Expenses	Total
2015	\$ 480,792	\$ 114,263	\$ 5,726	\$ 348	\$ -	\$ 112,910	\$ 714,039
2016	346,436	108,303	4,380	50	-	84,032	543,200
2017	294,635	6,921	-	-	-	127,479	429,034
2018	707,588	11,977	-	800	-	120,761	841,126
2019	940,224	-	-	951	-	99,398	1,040,572
2020	136,516	-	-	-	-	88,302	224,819
2021	83,364	-	-	702	45,102	104,764	233,932
2022	43,095	15,739	(2,770)	8,213	-	92,145	156,422
2023	167,065	6,734	-	-	-	70,534	244,333
2024	289,962	-	-	856	-	75,701	366,519

TOTAL BENEFIT DEDUCTIONS

Year Ended September 30
(in millions)



STATISTICAL SECTION

SCHEDULES OF RETIRED MEMBERS BY TYPE OF BENEFIT

SCHEDULE OF RETIRED MEMBERS BY TYPE OF PENSION BENEFITS

September 30, 2023

Amount of Monthly Pension	Number of Retirees	Type of Retirement *					Selected Option**		
		1	2	3	4	5	Opt. 1	Opt. 2	Opt. 3
\$ 401 - 800	17	7	9	1	-	-	13	4	-
801 - 1,200	22	8	12	1	1	-	18	3	1
1,201 - 1,600	23	9	10	4	-	-	16	6	1
1,601 - 2,000	49	10	37	2	-	-	42	6	1
2,001 - 2,400	32	11	18	2	1	-	27	5	-
2,401 - 2,800	30	15	15	-	-	-	23	6	1
2,801 - 3,200	27	11	13	-	1	2	20	7	-
3,201 - 3,600	20	13	6	1	-	-	9	11	-
3,601 - 4,000	29	21	5	2	-	1	19	10	-
Over 4,000	269	256	6	4	2	1	227	41	1
Totals	518	361	131	17	5	4	414	99	5

* Type of Retirement

- 1 – Normal retirement for age & service
- 2 – Survivor payment – normal retirement
- 3 – Survivor payment – death in service
- 4 – Non-duty disability retirement
- 5 – Survivor payment – disability retirement

** Selected Option

- Opt. 1 – Straight life allowance
- Opt. 2 – 100% survivor option
- Opt. 3 – 50% survivor option

Source: Gabriel, Roeder, Smith & Co.

SCHEDULE OF RETIRED MEMBERS BY TYPE OF OTHER POSTEMPLOYMENT BENEFITS*

September 30, 2023

Amount of Monthly Pension Benefit	Number of Retirees	Type of Other Postemployment Benefits		
		Health	Dental	Vision
\$ 401 - 800	17	-	1	1
801 - 1,200	22	1	3	3
1,201 - 1,600	23	-	3	3
1,601 - 2,000	49	3	6	4
2,001 - 2,400	32	4	7	6
2,401 - 2,800	30	4	6	7
2,801 - 3,200	27	2	1	1
3,201 - 3,600	20	1	2	2
3,601 - 4,000	29	3	7	5
Over 4,000	269	29	49	50
Totals	518	47	85	82

* Number counts include members participating in the defined benefit pension plan and receiving the corresponding benefit including those who do not receive an employer paid subsidy.

Source: Gabriel, Roeder, Smith & Co.

STATISTICAL SECTION

SCHEDULE OF OTHER POSTEMPLOYMENT BENEFITS

For Year Ended September 30, 2024

Claims:

Health Insurance	\$285,563
Dental Insurance	(134)
Vision Insurance	(1,362)

Estimated Claims Liability:

Health Insurance	4,399
Dental Insurance	134
Vision Insurance	1,362

Administrative Fees:

Health Insurance	11,919
Vision Insurance	106
Dental Insurance	2,850

Personnel Services:

Staff Salaries	30,241
Staff Retirement and Social Security	16,011
Staff Other Fringe Benefits	6,117

Professional Services:

Accounting	139
Actuarial	3,238
Attorney General Fees	245
Audit	3,446

Building and Equipment:

Building Rentals	62
Equipment Purchase, Maintenance, and Rentals	1

Miscellaneous:

Postage, Telephone and Other	439
Printing	4
Technological Support	882

Grand Total

\$365,662

STATISTICAL SECTION

SCHEDULES OF AVERAGE BENEFIT PAYMENTS

SCHEDULE OF AVERAGE BENEFIT PAYMENTS – PENSION*

Last Ten Years

Payment Periods	Credited Service (Years) as of September 30							Total
	0 - 5	5 - 10	10 - 15	15 - 20	20 - 25	25 - 30	30 +	
Period 10/1/13 to 9/30/14								
Average Monthly Benefit	\$ 1,159	\$ 1,391	\$ 2,496	\$ 3,772	\$ 3,743	\$ 3,719	\$ 3,876	\$ 3,373
Average Final Average Salary	43,634	76,195	74,592	90,417	93,965	91,634	97,007	87,534
Number of Active Retirants	6	32	98	214	134	46	24	554
Period 10/1/14 to 9/30/15								
Average Monthly Benefit	\$ 1,511	\$ 1,391	\$ 2,503	\$ 3,793	\$ 3,887	\$ 3,996	\$ 4,042	\$ 3,474
Average Final Average Salary	59,132	81,204	76,126	91,310	95,344	96,935	97,792	89,602
Number of Active Retirants	6	29	96	217	143	43	26	560
Period 10/1/15 to 9/30/16								
Average Monthly Benefit	\$ 1,511	\$ 1,337	\$ 2,523	\$ 3,866	\$ 3,882	\$ 4,027	\$ 4,076	\$ 3,509
Average Final Average Salary	59,132	80,925	77,284	92,681	95,740	98,622	101,248	90,780
Number of Active Retirants	6	29	91	213	139	43	26	547
Period 10/1/16 to 9/30/17								
Average Monthly Benefit	\$ 1,388	\$ 1,408	\$ 2,500	\$ 3,892	\$ 3,982	\$ 4,215	\$ 4,206	\$ 3,574
Average Final Average Salary	101,246	84,661	78,108	94,497	97,008	102,377	100,443	92,954
Number of Active Retirants	5	29	92	208	138	48	31	551
Period 10/1/17 to 9/30/18								
Average Monthly Benefit	\$ 1,388	\$ 1,341	\$ 2,519	\$ 3,895	\$ 4,031	\$ 4,258	\$ 4,183	\$ 3,605
Average Final Average Salary	101,246	85,145	80,246	95,039	98,859	103,174	99,914	94,232
Number of Active Retirants	5	29	85	206	139	47	33	544
Period 10/1/18 to 9/30/19								
Average Monthly Benefit	\$ 1,388	\$ 1,311	\$ 2,558	\$ 3,980	\$ 4,045	\$ 4,541	\$ 4,451	\$ 3,704
Average Final Average Salary	101,246	85,145	80,945	96,306	100,021	110,472	105,932	96,431
Number of Active Retirants	5	29	83	196	140	50	43	546
Period 10/1/19 to 9/30/20								
Average Monthly Benefit	\$ 1,388	\$ 1,332	\$ 2,590	\$ 4,050	\$ 4,092	\$ 4,666	\$ 4,499	\$ 3,768
Average Final Average Salary	101,246	85,868	82,399	98,487	101,083	113,262	107,004	98,225
Number of Active Retirants	5	28	79	184	139	51	42	528
Period 10/1/20 to 9/30/21								
Average Monthly Benefit	\$ 1,388	\$ 1,348	\$ 2,588	\$ 4,103	\$ 4,156	\$ 4,831	\$ 4,689	\$ 3,858
Average Final Average Salary	101,246	86,358	82,476	99,220	102,359	116,012	110,455	99,755
Number of Active Retirants	5	27	77	175	138	57	46	525
Period 10/1/21 to 9/30/22								
Average Monthly Benefit	\$ 1,216	\$ 1,343	\$ 2,665	\$ 4,084	\$ 4,143	\$ 4,878	\$ 4,717	\$ 3,912
Average Final Average Salary	93,754	86,518	84,723	99,682	103,116	118,387	112,209	101,340
Number of Active Retirants	3	24	74	167	134	66	48	516
Period 10/1/22 to 9/30/23								
Average Monthly Benefit	\$ 1,216	\$ 1,293	\$ 2,710	\$ 4,100	\$ 4,128	\$ 5,034	\$ 4,982	\$ 3,991
Average Final Average Salary	93,754	87,458	85,706	100,365	103,728	120,942	117,023	103,082
Number of Active Retirants	3	23	72	163	133	68	56	518

* Number counts only include members participating in the defined benefit plan and receiving the corresponding benefit.

Source: Gabriel, Roeder, Smith & Co.

STATISTICAL SECTION

SCHEDULES OF AVERAGE BENEFIT PAYMENTS

SCHEDULE OF AVERAGE BENEFIT PAYMENTS – HEALTH*

Last Ten Years

Payment Periods	Credited Service (Years) as of September 30							Total
	0 - 5	5 - 10	10 - 15	15 - 20	20 - 25	25 - 30	30 +	
Period 10/1/13 to 9/30/14								
Average Monthly Benefit	\$ 17	\$ 2,102	\$ 2,293	\$ 3,732	\$ 3,646	\$ 5,081	\$ 5,859	\$ 3,502
Average Final Average Salary	19,500	84,638	72,072	87,984	100,088	127,752	131,721	91,744
Number of Active Retirants	1	3	13	28	19	6	2	72
Period 10/1/14 to 9/30/15								
Average Monthly Benefit	\$ -	\$ 1,728	\$ 2,425	\$ 4,050	\$ 4,187	\$ 5,081	\$ 5,859	\$ 3,852
Average Final Average Salary	-	84,638	75,582	93,677	109,512	127,752	131,721	98,425
Number of Active Retirants	-	3	12	29	19	6	2	71
Period 10/1/15 to 9/30/16								
Average Monthly Benefit	\$ -	\$ 1,523	\$ 2,631	\$ 4,357	\$ 4,263	\$ 4,542	\$ 5,859	\$ 4,038
Average Final Average Salary	-	94,507	84,721	98,068	108,486	127,752	131,721	102,473
Number of Active Retirants	-	2	10	27	17	6	2	64
Period 10/1/16 to 9/30/17								
Average Monthly Benefit	\$ -	\$ 1,927	\$ 2,631	\$ 4,532	\$ 4,720	\$ 4,745	\$ 5,859	\$ 4,264
Average Final Average Salary	-	77,073	84,721	101,830	112,020	131,836	131,721	104,578
Number of Active Retirants	-	1	10	25	14	5	2	57
Period 10/1/17 to 9/30/18								
Average Monthly Benefit	\$ -	\$ 1,927	\$ 2,631	\$ 4,697	\$ 4,972	\$ 4,745	\$ 5,859	\$ 4,382
Average Final Average Salary	-	77,073	84,721	104,825	117,679	131,836	131,721	107,137
Number of Active Retirants	-	1	10	24	13	5	2	55
Period 10/1/18 to 9/30/19								
Average Monthly Benefit	\$ -	\$ 1,927	\$ 2,829	\$ 4,815	\$ 4,434	\$ 4,745	\$ 5,875	\$ 4,391
Average Final Average Salary	-	77,073	90,437	106,165	116,234	131,836	141,379	109,762
Number of Active Retirants	-	1	9	23	13	5	3	54
Period 10/1/19 to 9/30/20								
Average Monthly Benefit	\$ -	\$ 1,927	\$ 2,702	\$ 4,908	\$ 4,474	\$ 5,401	\$ 5,875	\$ 4,514
Average Final Average Salary	-	77,073	87,887	108,069	116,577	138,789	141,379	112,048
Number of Active Retirants	-	1	8	21	14	6	3	53
Period 10/1/20 to 9/30/21								
Average Monthly Benefit	\$ -	\$ 1,927	\$ 2,934	\$ 5,112	\$ 4,474	\$ 6,151	\$ 6,552	\$ 4,803
Average Final Average Salary	-	77,073	93,582	111,275	116,577	149,397	154,928	117,432
Number of Active Retirants	-	1	7	19	14	7	3	51
Period 10/1/21 to 9/30/22								
Average Monthly Benefit	\$ -	\$ 1,927	\$ 2,934	\$ 5,210	\$ 4,266	\$ 6,151	\$ 7,067	\$ 4,873
Average Final Average Salary	-	77,073	93,582	115,793	120,729	149,397	159,255	121,387
Number of Active Retirants	-	1	7	18	12	7	4	49
Period 10/1/22 to 9/30/23								
Average Monthly Benefit	\$ -	\$ -	\$ 2,934	\$ 5,453	\$ 4,266	\$ 6,151	\$ 7,480	\$ 5,094
Average Final Average Salary	-	-	93,582	117,777	120,729	149,397	163,935	124,547
Number of Active Retirants	-	-	7	16	12	7	5	47

* Number counts only include members participating in the defined benefit plan and receiving the corresponding benefit. Average monthly benefits shown are pension benefits.

Source: Gabriel, Roeder, Smith & Co.

STATISTICAL SECTION

SCHEDULES OF AVERAGE BENEFIT PAYMENTS

SCHEDULE OF AVERAGE BENEFIT PAYMENTS – DENTAL *

Last Ten Years

Payment Periods	Credited Service (Years) as of September 30							Total
	0 - 5	5 - 10	10 - 15	15 - 20	20 - 25	25 - 30	30 +	
Period 10/1/13 to 9/30/14								
Average Monthly Benefit	\$ -	\$ 1,923	\$ 2,758	\$ 3,790	\$ 3,592	\$ 4,148	\$ 3,476	\$ 3,517
Average Final Average Salary	-	84,070	78,748	90,107	93,759	103,377	99,613	90,883
Number of Active Retirants	-	5	21	44	35	15	4	124
Period 10/1/14 to 9/30/15								
Average Monthly Benefit	\$ -	\$ 1,699	\$ 2,741	\$ 3,863	\$ 3,631	\$ 4,184	\$ 3,476	\$ 3,552
Average Final Average Salary	-	84,070	81,188	89,897	94,432	108,597	99,613	91,921
Number of Active Retirants	-	5	20	46	33	14	4	122
Period 10/1/15 to 9/30/16								
Average Monthly Benefit	\$ -	\$ 1,589	\$ 2,982	\$ 4,073	\$ 3,716	\$ 3,977	\$ 3,476	\$ 3,686
Average Final Average Salary	-	88,862	87,229	94,191	94,351	111,362	99,613	95,283
Number of Active Retirants	-	4	16	41	29	13	4	107
Period 10/1/16 to 9/30/17								
Average Monthly Benefit	\$ -	\$ 1,745	\$ 2,982	\$ 4,171	\$ 3,978	\$ 4,077	\$ 4,733	\$ 3,877
Average Final Average Salary	-	81,169	87,229	96,403	97,245	109,072	121,142	97,547
Number of Active Retirants	-	3	16	39	28	15	4	105
Period 10/1/17 to 9/30/18								
Average Monthly Benefit	\$ -	\$ 1,745	\$ 3,152	\$ 4,266	\$ 4,072	\$ 4,077	\$ 4,113	\$ 3,952
Average Final Average Salary	-	81,169	91,729	98,152	99,422	109,072	109,976	99,293
Number of Active Retirants	-	3	14	38	27	15	5	102
Period 10/1/18 to 9/30/19								
Average Monthly Benefit	\$ -	\$ 1,745	\$ 3,527	\$ 4,424	\$ 3,953	\$ 4,200	\$ 4,412	\$ 4,069
Average Final Average Salary	-	81,169	98,479	99,717	98,726	109,820	118,430	101,501
Number of Active Retirants	-	3	12	35	27	16	6	99
Period 10/1/19 to 9/30/20								
Average Monthly Benefit	\$ -	\$ 1,738	\$ 3,125	\$ 4,608	\$ 3,990	\$ 4,464	\$ 4,412	\$ 4,152
Average Final Average Salary	-	81,169	93,993	103,891	99,523	113,569	118,430	103,595
Number of Active Retirants	-	3	9	31	28	17	6	94
Period 10/1/20 to 9/30/21								
Average Monthly Benefit	\$ -	\$ 1,738	\$ 3,382	\$ 4,941	\$ 4,203	\$ 4,895	\$ 5,064	\$ 4,484
Average Final Average Salary	-	81,169	99,739	108,398	103,941	120,815	123,927	109,297
Number of Active Retirants	-	3	8	27	26	18	8	90
Period 10/1/21 to 9/30/22								
Average Monthly Benefit	\$ -	\$ 1,517	\$ 3,382	\$ 4,847	\$ 4,093	\$ 4,895	\$ 5,463	\$ 4,505
Average Final Average Salary	-	65,512	99,739	108,398	105,909	120,815	129,382	110,643
Number of Active Retirants	-	2	8	27	24	18	9	88
Period 10/1/22 to 9/30/23								
Average Monthly Benefit	\$ -	\$ 1,108	\$ 3,382	\$ 4,946	\$ 4,093	\$ 4,895	\$ 5,830	\$ 4,606
Average Final Average Salary	-	53,950	99,739	108,934	105,909	120,815	134,709	112,116
Number of Active Retirants	-	1	8	24	24	18	10	85

* Number counts only include members participating in the defined benefit plan and receiving the corresponding benefit. Average monthly benefits shown are pension benefits.

Source: Gabriel, Roeder, Smith & Co.

STATISTICAL SECTION

SCHEDULES OF AVERAGE BENEFIT PAYMENTS

SCHEDULE OF AVERAGE BENEFIT PAYMENTS – VISION*

Last Ten Years

Payment Periods	Credited Service (Years) as of September 30							Total
	0 - 5	5 - 10	10 - 15	15 - 20	20 - 25	25 - 30	30 +	
Period 10/1/13 to 9/30/14								
Average Monthly Benefit	\$ 17	\$ 2,186	\$ 2,635	\$ 4,117	\$ 3,858	\$ 4,251	\$ 4,685	\$ 3,755
Average Final Average Salary	19,500	96,442	76,039	95,551	97,154	107,446	128,996	94,736
Number of Active Retirants	1	3	16	39	34	12	3	108
Period 10/1/14 to 9/30/15								
Average Monthly Benefit	\$ -	\$ 1,813	\$ 2,763	\$ 4,178	\$ 4,001	\$ 4,381	\$ 4,685	\$ 3,895
Average Final Average Salary	-	96,442	79,112	94,711	99,476	111,122	128,996	96,819
Number of Active Retirants	-	3	15	41	32	12	3	106
Period 10/1/15 to 9/30/16								
Average Monthly Benefit	\$ -	\$ 1,649	\$ 2,942	\$ 4,369	\$ 4,141	\$ 4,155	\$ 4,685	\$ 4,043
Average Final Average Salary	-	112,213	88,092	98,758	100,113	114,619	128,996	100,931
Number of Active Retirants	-	2	12	37	28	11	3	93
Period 10/1/16 to 9/30/17								
Average Monthly Benefit	\$ -	\$ 2,179	\$ 2,942	\$ 4,495	\$ 4,300	\$ 4,033	\$ 4,912	\$ 4,171
Average Final Average Salary	-	112,485	88,092	101,484	101,237	108,829	119,411	101,861
Number of Active Retirants	-	1	12	35	28	14	5	95
Period 10/1/17 to 9/30/18								
Average Monthly Benefit	\$ -	\$ 2,179	\$ 3,136	\$ 4,610	\$ 4,343	\$ 4,033	\$ 4,912	\$ 4,259
Average Final Average Salary	-	112,485	91,298	103,588	103,435	108,829	119,411	103,823
Number of Active Retirants	-	1	11	34	28	14	5	93
Period 10/1/18 to 9/30/19								
Average Monthly Benefit	\$ -	\$ 2,179	\$ 3,364	\$ 4,625	\$ 4,081	\$ 4,167	\$ 5,077	\$ 4,263
Average Final Average Salary	-	112,485	97,100	103,588	100,961	109,642	126,291	104,705
Number of Active Retirants	-	1	10	34	26	15	6	92
Period 10/1/19 to 9/30/20								
Average Monthly Benefit	\$ -	\$ 2,179	\$ 2,779	\$ 4,799	\$ 4,081	\$ 4,449	\$ 5,077	\$ 4,347
Average Final Average Salary	-	112,485	90,742	107,087	100,961	113,637	126,291	106,532
Number of Active Retirants	-	1	7	31	26	16	6	87
Period 10/1/20 to 9/30/21								
Average Monthly Benefit	\$ -	\$ 2,179	\$ 3,063	\$ 4,926	\$ 4,205	\$ 4,907	\$ 5,442	\$ 4,593
Average Final Average Salary	-	112,485	97,861	109,120	105,866	121,305	130,057	111,637
Number of Active Retirants	-	1	6	29	24	17	7	84
Period 10/1/21 to 9/30/22								
Average Monthly Benefit	\$ -	\$ -	\$ 3,063	\$ 4,838	\$ 4,131	\$ 4,907	\$ 5,838	\$ 4,624
Average Final Average Salary	-	-	97,861	109,120	107,311	121,305	135,329	112,826
Number of Active Retirants	-	-	6	29	23	17	8	83
Period 10/1/22 to 9/30/23								
Average Monthly Benefit	\$ -	\$ -	\$ 3,063	\$ 4,955	\$ 4,131	\$ 4,907	\$ 6,205	\$ 4,712
Average Final Average Salary	-	-	97,861	109,801	107,311	121,305	140,588	113,993
Number of Active Retirants	-	-	6	27	23	17	9	82

* Number counts only include members participating in the defined benefit plan and receiving the corresponding benefit. Average monthly benefits shown are pension benefits.

Source: Gabriel, Roeder, Smith & Co.

STATISTICAL SECTION

SCHEDULES OF PRINCIPAL PARTICIPATING COURTS

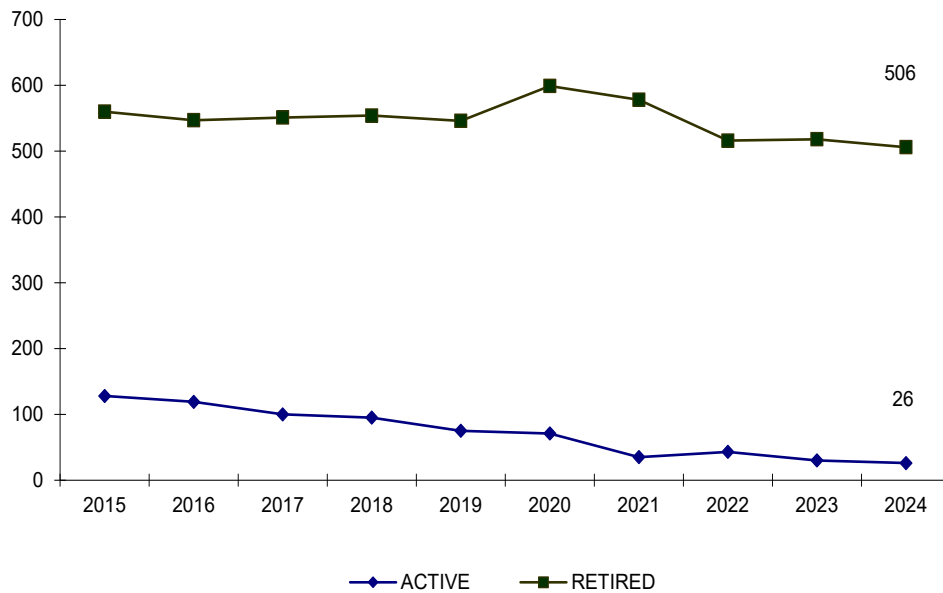
For Fiscal Years Ending September 30, 2024 and 2015

Participating Court	2024		2015	
	Employees	Percentage of Total System	Employees	Percentage of Total System
Court of Appeals	4	20.0 %	13	10.1 %
03rd Circuit	2	10.0	12	9.3
36th Circuit	2	10.0	7	5.4
06th District	2	10.0	6	4.7
All other	10	50.0	91	70.5
Total	20	100.0 %	129	100.0 %

STATISTICAL SECTION

TEN YEAR HISTORY OF MEMBERSHIP

Fiscal Year Ended September 30, 2024



Source: Gabriel, Roeder, Smith & Co.

STATISTICAL SECTION

SCHEDULE OF PARTICIPATING COURTS

At September 30, 2024

Supreme Court
Appeals Court
03rd Circuit Court
06th Circuit Court
08th District Court
16th District Court
17th District Court
21st District Court
33rd District Court
36th District Court

39th District Court
40th District Court
48th District Court
66th District Court
67th District Court
70th District Court
71st District Court
Kent County Probate Court
Ottawa County Probate Court
Wayne County Probate Court

STATISTICAL SECTION

SCHEDULE OF PARTICIPATING COURTS

This page was intentionally left blank.

ACKNOWLEDGMENTS

ACKNOWLEDGMENTS

The *Michigan Judges' Retirement System Annual Comprehensive Financial Report* is prepared by Financial Services, Fiscal Management Division. Staff of the division for the fiscal year 2024 report included:

Management:

Michael Foerster, Director
Paula Webb, Accounting Manager

Accountants:

Nick Carey
Dan Harry
Amanda Lamp
Rick Legal
Hope Richardson

Technical and Support Staff:

Cari Beach
Jamin Schroeder
Sophia Thelen

Special thanks are also extended to the Office of Retirement Services personnel, accounting and support personnel throughout Financial Services, Treasury's Bureau of Investments, Department of Health and Human Services cashing personnel, Office of the Auditor General, Gabriel, Roeder, Smith & Co., and the staff at the Office of Financial Management. Preparation of this report would not have been possible without the efforts of these individuals.

This report may be viewed online at: www.michigan.gov/ors