



**Office of the Auditor General**

201 N. Washington Square, Sixth Floor • Lansing, Michigan 48913 • Phone: (517) 334-8050 • [audgen.michigan.gov](http://audgen.michigan.gov)

**Doug A. Ringler, CPA, CIA**  
Auditor General

April 9, 2024

The Honorable Mark E. Huizenga  
Michigan Senate  
Connie Binsfeld Building, Suite 7200  
Lansing, Michigan

Senator Huizenga:

Enclosed are answers to three questions you posed regarding Michigan Reconnect Initiative and Program (Reconnect) expenditures, student eligibility, and use of Reconnect grants as last-dollar financial assistance. To develop our answers, we reviewed appropriations acts, analyzed expenditures recorded in the State's accounting system, and reviewed reimbursements from the Michigan Student Scholarships and Grants system. Although we have no reason to question the accuracy, we did not audit the appropriation and expenditure data. We also obtained Reconnect student and grant data from the Michigan Department of Lifelong Education, Advancement, and Potential. In addition, we requested supporting documentation from 22 sampled community colleges to review compliance with student eligibility and last-dollar financial assistance statutory requirements.

We appreciate the opportunity to assist you in answering questions regarding this topic. If you have further questions, please do not hesitate to contact our office.

Sincerely,

A handwritten signature in black ink that reads 'Doug Ringler'. The signature is written in a cursive, flowing style.

Doug Ringler  
Auditor General

Enclosures

**Report Fraud/Waste/Abuse**

Online: [audgen.michigan.gov/report-fraud/](http://audgen.michigan.gov/report-fraud/)

Hotline: (517) 334-8060, Ext. 1650



### Background:

The Michigan Reconnect Initiative and Program (Reconnect) were enacted on April 2, 2020 by Public Acts 68 and 84 of 2020 and are intended to:

- Provide last-dollar financial assistance to individuals aged 25 and older seeking associate degrees or industry-recognized certificates or credentials.
- Provide those individuals with greater access to the education and skills needed to succeed in, and meet the demands of, an evolving economy in which there is continuing demand for a talented local workforce.
- Achieve the goal of increasing the number of residents ages 25 to 64 with a college degree or skill certificate or credential to 60% by 2030.

Reconnect was originally administered under the Department of Labor and Economic Opportunity (LEO) and was later transferred to Michigan Department of Lifelong Education, Advancement, and Potential (MiLEAP) in December 2023. MiLEAP's (formerly LEO's) role is to provide guidance to and work closely with Michigan's 31 public community colleges, including the three tribal colleges, to administer the Reconnect program (see Exhibit 1 on page 5).

Those interested in participating in the Reconnect program must meet initial eligibility requirements outlined in the statute, such as age, residency, and enrollment requirements (see Exhibit 2 on page 6). Applicants must complete an online Reconnect application and are notified immediately if they have been accepted into the program. Accepted applicants must also apply and be admitted to a Michigan community college, file the Free Application for Federal Student Aid (FAFSA), and enroll in an approved program of study to participate in the program. Reconnect students must also meet continuing eligibility requirements each year to remain eligible for Reconnect grants, such as GPA, residency, and enrollment requirements.

Reconnect covers the costs of in-district tuition, contact hours\*, and mandatory fees\* for eligible students. If a student chooses to attend an out-of-district community college, or does not live in a community college district, the Reconnect student\* may be responsible for covering any remaining cost difference between the in-district tuition rate and out-of-district tuition rate. Reconnect does not cover application and graduation fees, lab fees, course-specific fees, textbooks and other course material, and fees not charged to all students (i.e., parking fees, fitness center, athletic fees). Community colleges are responsible for calculating the Reconnect grant amount for each eligible student following departmental guidance and submitting a bill to the department for reimbursement. As last-dollar financial assistance, Reconnect pays for any remaining eligible costs not already covered by a student's Pell Grant or other State tuition-restricted scholarships or awards. Therefore, it is possible that an eligible Reconnect student does not receive a Reconnect grant because other awards covered the students' entire eligible cost.

MiLEAP informed us Reconnect funds were, and continue to be, used to cover the costs for "Future for Frontliners (F4F) dual-eligible students"\*. An F4F dual-eligible student is a community college student previously accepted into the F4F program but later moved to the Reconnect program because of a LEO administrative decision. Due to program similarities, LEO did not require F4F dual-eligible students to complete a Reconnect application. For academic years\* 2021 through 2023, approximately 35% of enrolled Reconnect students were F4F dual-eligible students (see Exhibit 3 on page 8). Reconnect grants for F4F dual-eligible students **are** included in our response to question 1; and we included F4F dual-eligible students in our sample-based review for questions

\* See glossary at end of letter for definition.

2 and 3 to verify they met initial and continuing eligibility requirements and last-dollar assistance requirements outlined in the statute.

While we presented expenditures related to the Reconnect Short Term Training Program\* and wraparound services\* in our answer to question 1, we did not include the expenditures in our review for questions 2 and 3 due to the overall immaterial nature to the program. Also, our review for questions 2 and 3 focused on the original program requirements contained in Public Act 68 of 2020 and did not include the updated program requirements enacted by Public Act 252 of 2022 (generally effective beginning academic year 2024) because a full academic year has not yet been completed under the new requirements.

**Questions and Answers:**

**Q1:** What are total Michigan Reconnect expenditures since program inception?

**A1:** We prepared Exhibits 4 through 11 to summarize Reconnect appropriations, expenditures, amounts paid to community colleges, and the average Reconnect grant per student per semester. Exhibit highlights include:

- Reconnect grant program appropriations totaled \$205.2 million for the four fiscal year period 2021 through 2024. In fiscal year 2024, an additional \$70 million was appropriated for the Michigan Reconnect expansion to 21 years of age (see Exhibit 4A and B).
- Work projects were established to carry forward unexpended appropriations from fiscal year 2021 through 2023. As of February 29, 2024, \$36.1 million (25%) of the \$146 million appropriated for the three-year period remains unexpended (see Exhibit 5).
- \$91.8 million was paid to Michigan community colleges for Reconnect grants for the three-year period covering academic years 2021 through 2023 (see Exhibit 8).
- Of the approximately 51,000 Reconnect students participating in Reconnect during academic years 2021 through 2023, approximately 34,000 (67%) received a Reconnect grant, averaging \$1,171 per student per semester, while approximately 17,000 (33%) did not receive a Reconnect grant because other award(s) covered their eligible costs (see Exhibits 10 and 11).
- Operating expenses, such as wages and advertising, totaled \$8.3 million (7.7%) for the three fiscal year period 2021 through 2023 (see Exhibit 6).
- Reconnect grants paid to community colleges for the three-year period covering academic years 2021 through 2023 averaged approximately \$1.0 million annually, with amounts ranging from \$1,300 to \$3.9 million (see Exhibits 8 and 9).

**Q2:** Do Michigan Reconnect students meet eligibility requirements?

**A2:** Yes, 100% of sampled students met initial and continuing eligibility requirements based on our review of student self-attested and other substantiated documentation, aside from completion of a Reconnect application for the F4F dual-eligible students (explained in the table below).

We randomly sampled 77 students from the population of approximately 51,000 Reconnect students enrolled in a community college at some point during academic years 2021 through 2023. We evaluated compliance with both initial and continuing eligibility requirements outlined in Public Act 68 of 2020 (see Exhibit 2 on page 6). The

\* See glossary at end of letter for definition.

77 sampled Reconnect students included 32 F4F dual-eligible students and related to 22 of Michigan's 31 public community colleges. We requested supporting documentation from MiLEAP and each sampled student's applicable community college to perform our review and summarized our results by eligibility requirement below.

Eligibility Review Results			
Sample Results		Type of Documentation Obtained	
Requirement	Known Errors	Student Self-Attested	Substantiated Support
<b>Initial Eligibility</b>			
<b>77 Reconnect students reviewed, including 32 F4F dual-eligible students</b>			
Age (25+)	0		77 (100%)
MI Resident for at Least 1 Year	0	73 (95%)	4 (5%)
Highschool Graduate or Equivalent	0	60 (78%)	17 (22%)
Enrolled at Eligible Institution	0		77 (100%)
Enrolled at Least Half-time	0		77 (100%)
Enrolled in Eligible Program	0		77 (100%)
No Prior Degree	0		77 (100%) <sup>1</sup>
Completed Reconnect Application:			
Reconnect-only Students* (45 tested)	0		45 (100%)
F4F Dual-Eligible Students (32 tested)	See footnote 2		
Filed FAFSA	0		77 (100%)
Applied for Gift Aid*	0		77 (100%)
<b>Continuing Eligibility</b>			
<b>46<sup>3</sup> Reconnect students reviewed, including 23 F4F dual-eligible students</b>			
Continues to be MI Resident	0	46 (100%)	
Enrolled at Eligible Institution	0		46 (100%)
Continuing Enrollment at Least Half-time <sup>4</sup>	0		46 (100%)
Enrolled in Eligible Program	0		46 (100%)
GPA (2.0+) <sup>4</sup>	0		46 (100%)
Advising Program Participation	0		46 (100%)
Filed FAFSA	0		46 (100%)
Applied for Gift Aid	0		46 (100%)
<p><sup>1</sup> Departmental guidance allows community colleges to rely on student's self-attestation on the FAFSA for verification of no prior degree(s); however, the FAFSA self-attestation pertains to bachelor's degrees only and does not address associate degrees. As a result, we verified with Center for Educational Performance and Information* that the sampled students had not previously earned an associate or bachelor's degree(s).</p> <p><sup>2</sup> LEO did not require any F4F dual-eligible students to complete a Reconnect application because the Reconnect and F4F applications shared similarities including information about the applicant's residency, date of birth, high school graduation or equivalent, and prior degrees. We verified all sampled F4F dual-eligible students completed a F4F application. We also verified the sampled F4F dual eligible students met all other Reconnect eligibility requirements.</p> <p><sup>3</sup> 46 of the 77 sampled Reconnect students continued their education beyond one year and were required to meet continuing eligibility requirements. The remaining 31 students did not continue their participation in the program (e.g., withdrew, no longer enrolled, earned a degree, etc.) and were therefore not tested for continuing eligibility.</p> <p><sup>4</sup> During our review, we identified instances where community colleges correctly determined students did not meet the applicable continuing eligibility requirement and the community college did not seek a Reconnect reimbursement. Since the community colleges appropriately handled these instances, we did not note them as an error.</p>			

Departmental guidance to community colleges allowed for students to self-attest whether they meet certain initial and continuing eligibility criterion, such as residency and high school graduation. For each eligibility requirement, the table denotes whether

\* See glossary at end of letter for definition.

MiLEAP and community colleges provided us with either: (1) documentation containing a student self-attestation, such as information from the student-completed FAFSA or community college application or (2) documentation from a substantiated source, such as driver's license, birth certificate, or high school transcripts.

**Q3:** Are community colleges utilizing Michigan Reconnect funds as last-dollar financial assistance, as required?

**A3:** Generally, yes. Reconnect grants were properly utilized as the last-dollar financial assistance in 98% of sampled semester billings reviewed.

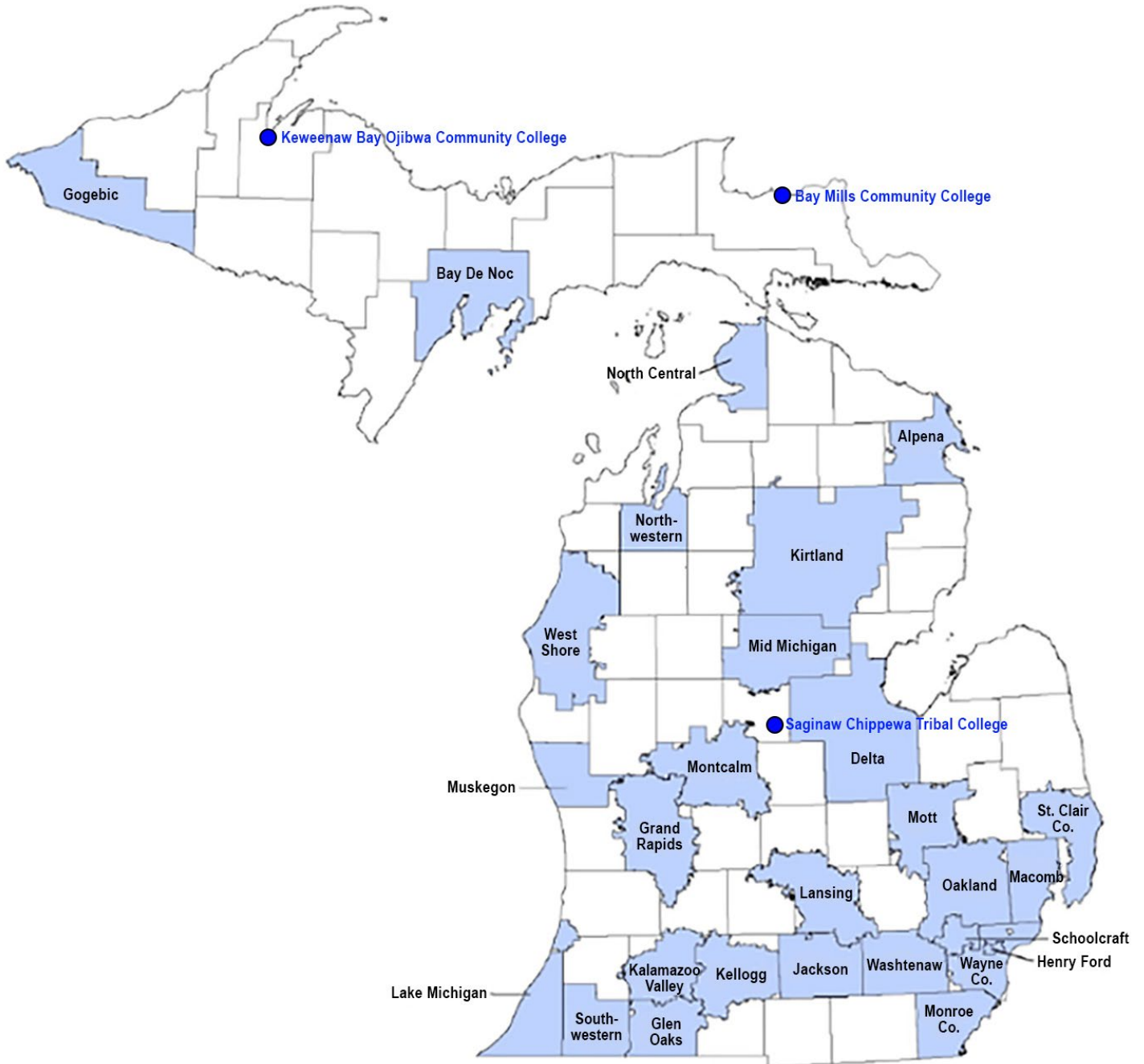
We used the same sample of students from question 2 for question 3 to evaluate compliance with the last-dollar financial assistance requirement outlined in Public Act 68 of 2020 (see Exhibit 2 on page 6). For academic years 2021 through 2023, the 77 sampled Reconnect students had 239 total semester billings resulting in Reconnect grants paid to community colleges totaling \$324,698. We reviewed all 239 semester billings, which included 50 billings seeking no Reconnect reimbursement (\$0) because other awards covered all the student's eligible costs. We requested supporting documentation from each sampled student's applicable community college to perform our review, such as financial award documents, semester billing statements, and tuition and fee schedules. Our results are summarized below.

<b>Last-Dollar Financial Assistance Review Results</b>	
<b>Sample Details</b>	
Number of Sampled Students	77
Number of Semester Billings Reviewed	239
Total Reconnect Grant Amount Reviewed	\$324,698
<b>Sample Results</b>	
Semester Billings Reviewed with No Errors	253 (98.3%)
Semester Billing Reviewed with Errors	4 (1.7%)
<b>Description of Errors</b>	
Community college error calculating in-district tuition rate	\$55 Overpayment
Community college did not deduct a scholarship, as required, before calculating the Reconnect grant amount	\$250 Overpayment
Community college did not include all allowable contact hours when calculating Reconnect grant amount	\$440 Underpayment
Community college did not recalculate student's financial aid need after changes to student's enrollment	\$938 Underpayment
<b>Net Impact on Sampled Reconnect Grants</b>	<b>\$1,073 (0.3%) Underpayment</b>



UNAUDITED

## Michigan Community College Districts August 2017



Source: This map was prepared by the House Fiscal Agency. We added the locations of the 3 tribal community colleges.



UNAUDITED

### Reconnect Program Requirements Under Public Act 68 of 2020 Applicable to Academic Years 2021 Through 2023

#### Initial Eligibility

Sec. 15. To establish initial eligibility for a Michigan Reconnect grant, an individual must meet all of the following conditions by the date of his or her enrollment described in subdivision (d):

Public Act Citation*	Description	Public Act Requirement
(a)	Age (25+)	Be at least 25 years old.
(b)	MI Resident for at Least 1 Year	Be a resident of this state for at least the immediately preceding year.
(c)	Highschool Graduate or Equivalent	Have graduated from high school with a diploma or certificate of completion or achieved a high school equivalency certificate. As used in this subdivision, "high school equivalency certificate" means that term as defined in section 4 of the school aid act of 1979, 1979 PA 94, MCL 388.1604.
(d)	Enrollment	Be admitted to, and enrolled as at least a half-time student in, a Pell-eligible program at an eligible institution leading to an associate degree or industry-recognized certificate or credential.
(e)	No Prior Degree	Not have previously earned an associate or baccalaureate degree.
(f)	Completed Reconnect Application	Timely complete a Michigan Reconnect grant application in a form and manner determined by the department.
(g)	Filed FAFSA	Timely file the Free Application for Federal Student Aid for the enrollment period described in subdivision (d).
(h)	Applied for Gift Aid	Timely apply for all available gift aid for the enrollment period described in subdivision (d).

#### Continuing Eligibility

Sec. 16. To establish continuing eligibility for a Michigan Reconnect grant at an eligible institution, an individual must meet all of the following conditions:

Public Act Citation*	Description	Public Act Requirement
(a)	Continues to be MI Resident	Continue to be a resident of this state.
(b)	Continuing Enrollment	Except as otherwise provided in section 18(1), maintain continuous enrollment as at least a half-time student in a Pell-eligible program at an eligible institution leading to an associate degree or industry-recognized certificate or credential.
(c)	GPA (2.0+)	Maintain a 2.0 grade point average in courses taken by the individual as a Michigan Reconnect grant student.
(d)	Advising Program Participation	Participate in relevant academic and career advising programs offered by the eligible institution.



### Continuing Eligibility, *continued*

Public Act Citation*	Description	Public Act Requirement
(e)	Filed FAFSA	Timely file the Free Application for Federal Student Aid for each academic year in which he or she applies for a Michigan Reconnect grant.
(f)	Applied for Gift Aid	Timely apply for all available gift aid for each academic year in which he or she applies for a Michigan Reconnect grant.

### Last-Dollar Financial Assistance

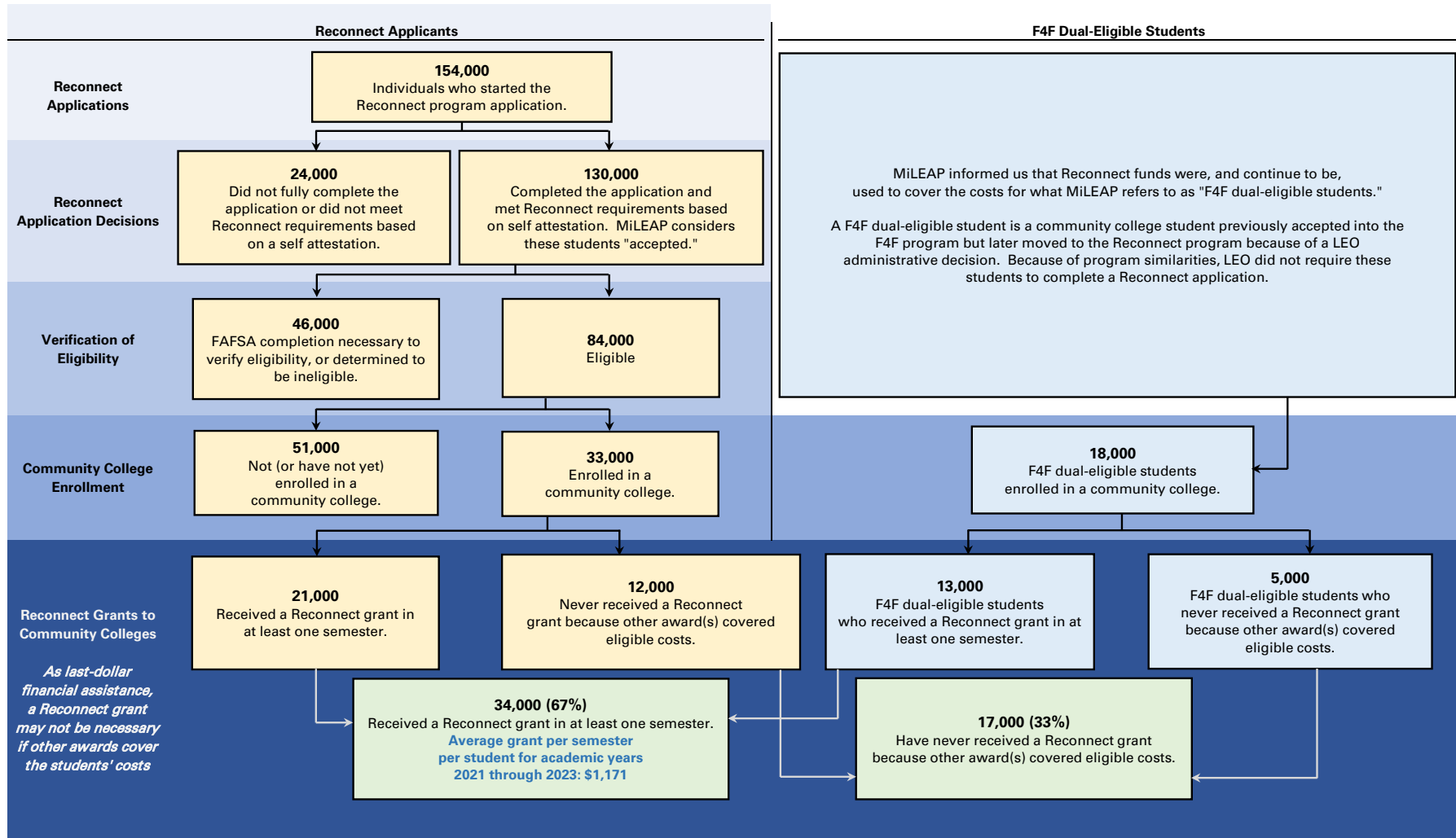
Sec. 17. Regardless of which community college district that a Michigan Reconnect grant student resides in, if any, the amount of a Michigan Reconnect grant must not exceed the cost of tuition at the in-district resident rate and mandatory fees at the eligible institution attended less all gift aid. Gift aid must be credited first to the student's tuition and mandatory fees. If awarded, Michigan Reconnect grant money must be paid to the eligible institution for credit to the student's account.

\* Public Act 68 of 2020, effective April 2, 2020, implemented the above requirements and are generally applicable to academic years 2021 through 2023 which were used to answer questions 2 and 3. Public Act 252 of 2022 went into effect March 29, 2023, and therefore, the above may not match the current requirements in the *MCL*.

Source: The OAG prepared this exhibit based on Public Act 68 of 2020.



**Reconnect Application, Enrollment, and Grant Process Including Applicant and Student Counts  
From September 1, 2020 Through August 31, 2023**



Source: The OAG prepared this exhibit using data from the Michigan Student Scholarships and Grants\* (MiSSG).

\* See glossary at end of letter for definition.

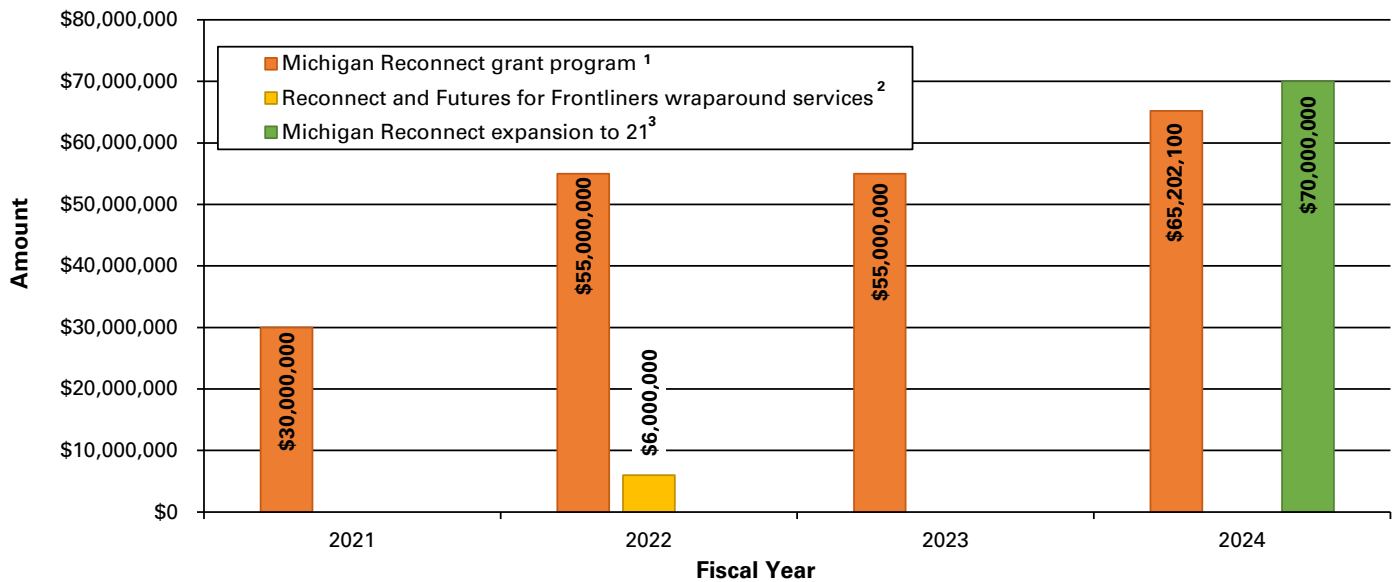
UNAUDITED

**Reconnect Appropriations by Line Item by Fiscal Year  
Fiscal Years 2021 Through 2024**

A. Appropriations Table

	<u>Fiscal Year</u>	<u>Amount</u>
Michigan Reconnect grant program <sup>1</sup>	2021	\$ 30,000,000
	2022	55,000,000
	2023	55,000,000
	2024	65,202,100
		<u>\$ 205,202,100</u>
Reconnect and Futures for Frontliners wraparound services <sup>2</sup>	2022	6,000,000
Michigan Reconnect expansion to 21 <sup>3</sup>	2024	70,000,000
<b>Total</b>		<u><u>\$ 281,202,100</u></u>

B. Appropriations Bar Graph



<sup>1</sup> Primary appropriation used to fund the Reconnect program.

<sup>2</sup> The appropriation for wraparound services was intended to provide child care, broadband access, transportation, or other services to individuals enrolled in the Reconnect or Futures for Frontliners programs to support continued efforts to remove barriers to employment and improve student success.

<sup>3</sup> The Reconnect expansion to 21 program is a similar program to Reconnect but is designed for individuals not less than 21 years of age and not more than 24 and who have had their education disrupted by COVID-19 by not having previously earned an associate or bachelor's degree. This program is funded with federal funds.

Source: The OAG prepared this exhibit with information from Public Acts 166 of 2020, 87 of 2021, 166 of 2022, and 119 of 2023.

UNAUDITED

**Reconnect Appropriations and Expenditures  
From October 1, 2021 Through February 29, 2024**

Appropriated Line Item	Fiscal Year Appropriated	Amount Appropriated	Amount Expended in Fiscal Year				Total Amount Expended	Amount Remaining*, As of February 29, 2024
			2021	2022	2023	2024, As of February 29, 2024		
Michigan Reconnect grant program	2021	\$ 30,000,000	\$ 17,005,782	\$ 12,994,217	\$	\$	\$ 29,999,999	\$ 1
	2022	55,000,000		32,145,040	377,433	847,566	33,370,039	21,629,961
	2023	55,000,000			41,375,771		41,375,771	13,624,229
	2024	65,202,100				32,197,569	32,197,569	33,004,531
		<u>\$ 205,202,100</u>	<u>\$ 17,005,782</u>	<u>\$ 45,139,257</u>	<u>\$ 41,753,204</u>	<u>\$ 33,045,136</u>	<u>\$ 136,943,379</u>	<u>68,258,721</u>
Reconnect and Futures for Frontliners wraparound services	2022	6,000,000		203,018	4,629,404	361,587	5,194,008	805,992
Michigan Reconnect expansion to 21	2024	70,000,000				3,194,464	3,194,464	66,805,536
	Total	<u>\$ 281,202,100</u>	<u>\$ 17,005,782</u>	<u>\$ 45,342,274</u>	<u>\$ 46,382,608</u>	<u>\$ 36,601,187</u>	<u>\$ 145,331,851</u>	<u>\$ 135,870,249</u>

\* The remaining amounts at the end of fiscal years 2021 through 2023 were carried forward as work projects for subsequent fiscal years under the provisions of MCL Section 18.1451a(3). As of February 29, 2024, \$36.1 million (25%) of the \$146 million appropriated for the three-year period remains unexpended.

Source: The OAG prepared this exhibit using data from Statewide Integrated Governmental Management Applications\* (SIGMA) and information from Public Acts 166 of 2020, 87 of 2021, 166 of 2022, and 119 of 2023.

\* See glossary at end of letter for definition.



UNAUDITED

**Reconnect Expenditures by Category  
From October 1, 2021 Through September 30, 2023**

Category	Amount Expended in Fiscal Year			Total Amount Expended
	2021	2022	2023	
<b>Student Grants</b>				
Reconnect grants <sup>1</sup>	\$ 14,222,753	\$ 40,897,338	\$ 37,462,744	\$ 92,582,835
Short Term Training Program <sup>2</sup>	423,363	707,011	(1,500)	1,128,874
Wraparound services <sup>3</sup>		203,018	4,629,404	4,832,421
Total student grants	<u>\$ 14,646,117</u>	<u>\$ 41,807,366</u>	<u>\$ 42,090,648</u>	<u>\$ 98,544,130</u>
<b>Administrative Grants</b>				
Michigan College Access Network	\$ 215,625	\$ 703,417	\$ 794,076	\$ 1,713,118
The Graduate Network	92,840			92,840
SOVA Solutions	47,750			47,750
Total administrative grants	<u>\$ 356,215</u>	<u>\$ 703,417</u>	<u>\$ 794,076</u>	<u>\$ 1,853,708</u>
<b>Operating Expenses</b>				
Wages and benefits	\$ 1,145,393	\$ 1,471,889	\$ 2,202,175	\$ 4,819,458
Advertising	619,000	925,507	845,007	2,389,514
Other operating expenses	239,057	434,095	450,702	1,123,854
Total operating expenses	<u>\$ 2,003,451</u>	<u>\$ 2,831,491</u>	<u>\$ 3,497,884</u>	<u>\$ 8,332,826</u>
<b>Total</b>	<b><u>\$ 17,005,782</u></b>	<b><u>\$ 45,342,274</u></b>	<b><u>\$ 46,382,608</u></b>	<b><u>\$108,730,664</u></b>

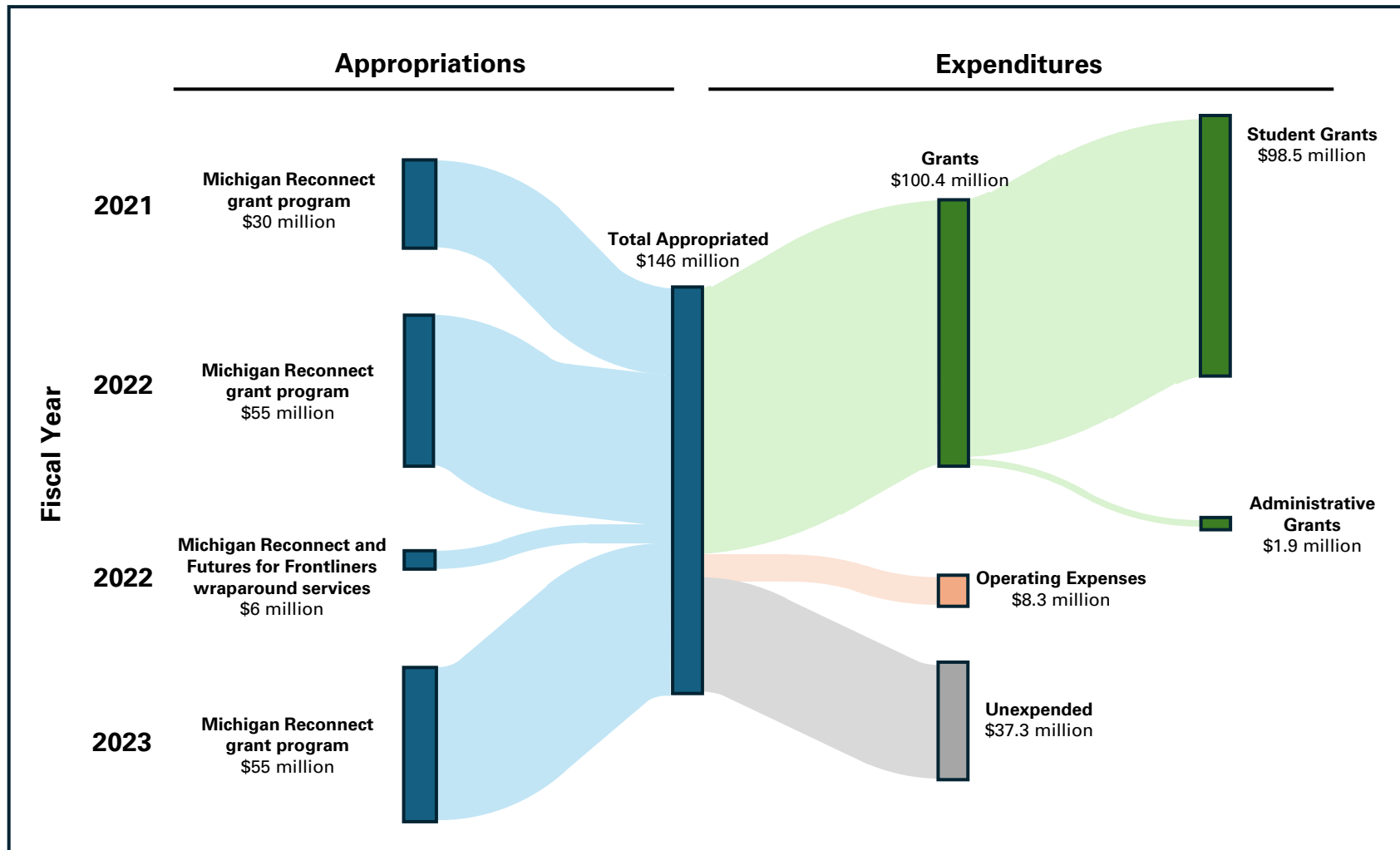
<sup>1</sup> The grant amounts come from SIGMA, the State's accounting system, and therefore may not match values in other exhibits prepared with data from MiSSG.

<sup>2</sup> The Reconnect Short Term Training Program provided a one-time grant not to exceed \$1,500 to contribute to tuition costs for a qualified occupational training program at a qualified private training institution under *MCL* Section 390.1721.

<sup>3</sup> The appropriation for wraparound services was intended to provide child care, broadband access, transportation, or other services to individuals enrolled in the Reconnect or Futures for Frontliners programs to support continued efforts to remove barriers to employment and improve student success.

Source: The OAG prepared this exhibit using data from SIGMA.

**Reconnect Appropriations and Expenditures**  
**Fiscal Year 2021 Through Fiscal Year 2023**



Source: The OAG prepared this exhibit using data from SIGMA and information from Public Acts 166 of 2020, 87 of 2021, 166 of 2022, and 119 of 2023.

UNAUDITED

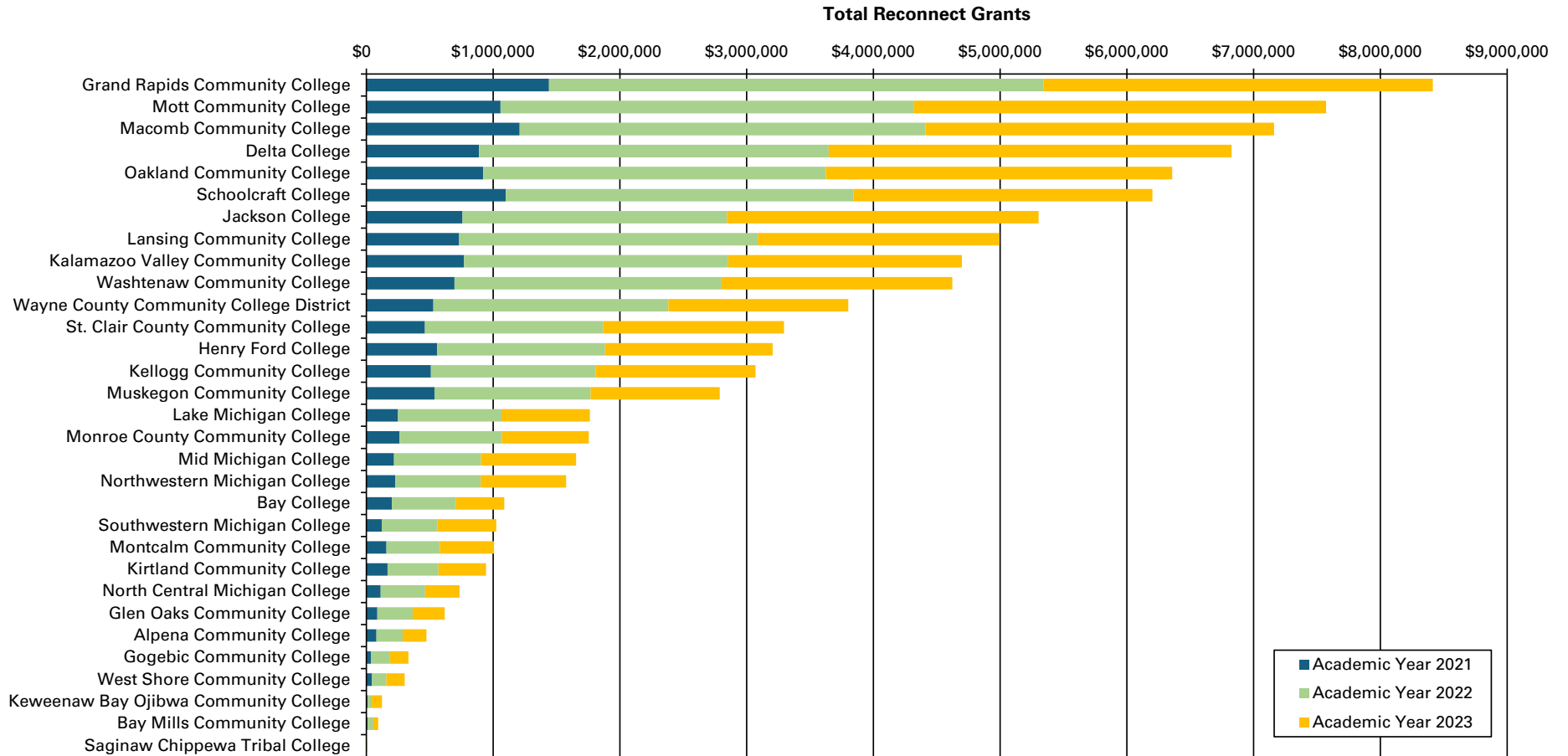
**Reconnect Grants to Community Colleges by Academic Year  
 From September 1, 2020 Through August 31, 2023**

Community College	Academic Year			Total
	2021	2022	2023	
Grand Rapids Community College	\$ 1,439,931	\$ 3,904,045	\$ 3,070,117	\$ 8,414,093
Mott Community College	1,057,912	3,262,857	3,251,249	7,572,018
Macomb Community College	1,208,770	3,200,997	2,751,068	7,160,835
Delta College	888,846	2,757,890	3,178,336	6,825,072
Oakland Community College	922,248	2,701,475	2,734,069	6,357,792
Schoolcraft College	1,100,723	2,743,928	2,356,158	6,200,808
Jackson College	757,825	2,085,424	2,459,576	5,302,825
Lansing Community College	732,537	2,356,013	1,907,874	4,996,424
Kalamazoo Valley Community College	771,384	2,082,754	1,844,166	4,698,304
Washtenaw Community College	694,514	2,107,704	1,819,580	4,621,797
Wayne County Community College District	529,131	1,852,818	1,419,545	3,801,493
St. Clair County Community College	461,306	1,404,805	1,429,343	3,295,454
Henry Ford College	559,088	1,323,182	1,323,259	3,205,529
Kellogg Community College	509,707	1,297,967	1,262,589	3,070,262
Muskegon Community College	536,452	1,232,830	1,019,301	2,788,583
Lake Michigan College	250,357	815,445	697,683	1,763,486
Monroe County Community College	261,958	809,091	683,160	1,754,209
Mid Michigan College	217,181	687,303	750,119	1,654,603
Northwestern Michigan College	228,577	672,735	674,127	1,575,439
Bay College	201,709	506,125	380,338	1,088,172
Southwestern Michigan College	121,552	440,220	462,274	1,024,046
Montcalm Community College	157,882	421,314	428,313	1,007,509
Kirtland Community College	167,272	402,353	374,285	943,910
North Central Michigan College	113,346	349,441	272,945	735,732
Glen Oaks Community College	85,797	279,515	253,241	618,553
Alpena Community College	80,125	205,589	188,707	474,421
Gogebic Community College	36,512	150,168	145,931	332,611
West Shore Community College	43,718	114,420	144,337	302,475
Keweenaw Bay Ojibwa Community College	8,750	34,145	80,195	123,090
Bay Mills Community College	9,355	44,772	39,723	93,850
Saginaw Chippewa Tribal College		4,279	1,260	5,539
<b>Total</b>	<b>\$ 14,154,464</b>	<b>\$ 40,251,604</b>	<b>\$ 37,402,864</b>	<b>\$ 91,808,931</b>
<b>Average</b>	<b>\$ 456,596</b>	<b>\$ 1,298,439</b>	<b>\$ 1,206,544</b>	<b>\$ 2,961,578</b>

Source: The OAG prepared this exhibit using data from MiSSG.

UNAUDITED

**Total Reconnect Grants for Community Colleges by Academic Year  
From September 1, 2020 Through August 31, 2023**



Source: The OAG prepared this exhibit using data from MiSSG.

UNAUDITED

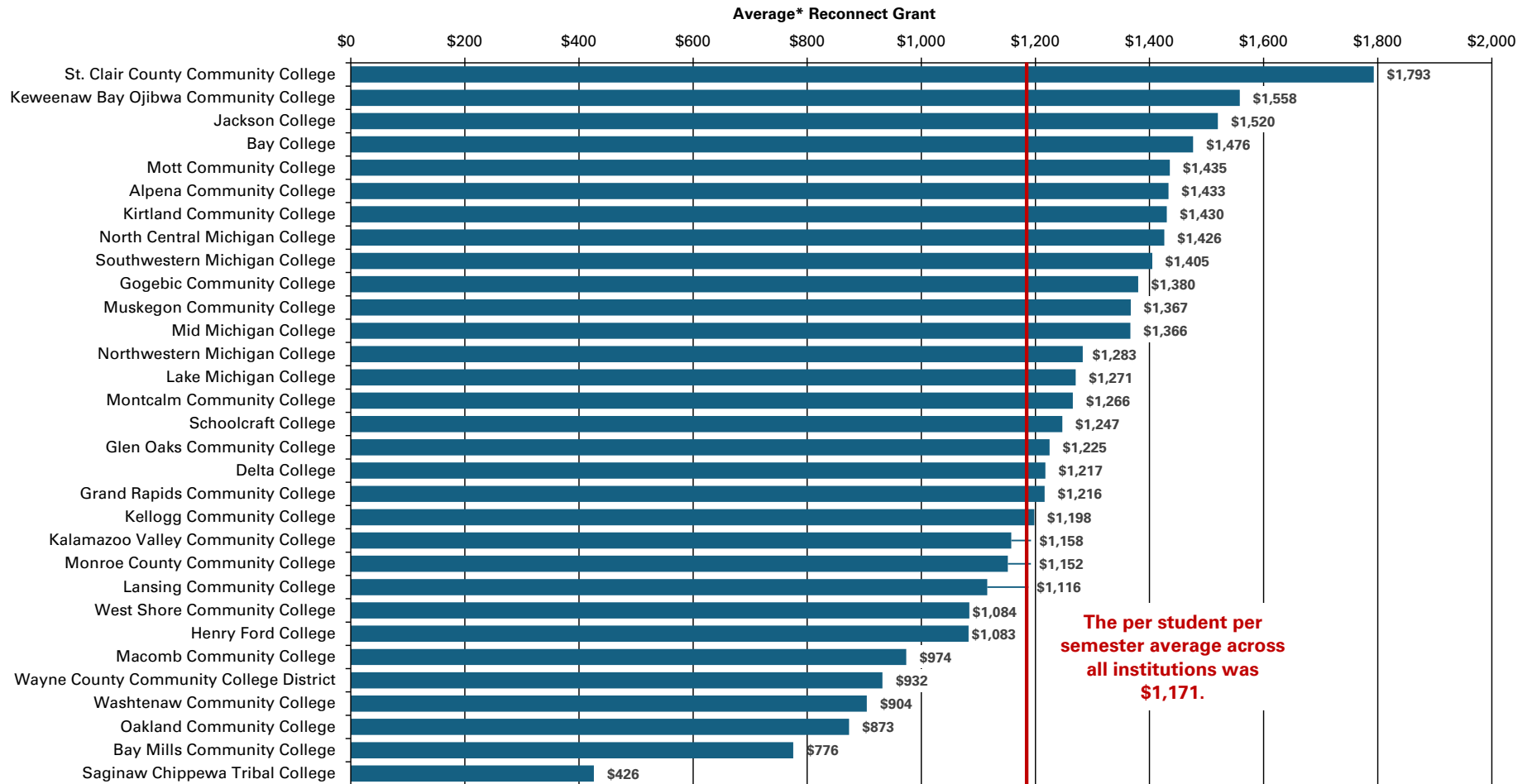
**Number (Percentage) of Reconnect Student With and Without a Grant  
From September 1, 2020 Through August 31, 2023**

Community College	Academic Years 2021 Through 2023			
	Number (Percentage) of Students While Enrolled at a Community College			
	Did Not Receive a Reconnect Grant Because Other Awards Covered Costs	Received a Reconnect Grant in at Least One Semester		Total Number of Students in the Reconnect Program
Oakland Community College	1,783 (37%)	3,037 (63%)	4,820	
Macomb Community College	1,185 (27%)	3,230 (73%)	4,415	
Wayne County Community College District	2,070 (50%)	2,030 (50%)	4,100	
Grand Rapids Community College	1,120 (28%)	2,916 (72%)	4,036	
Washtenaw Community College	1,312 (38%)	2,112 (62%)	3,424	
Delta College	1,081 (33%)	2,243 (67%)	3,324	
Mott Community College	933 (30%)	2,151 (70%)	3,084	
Schoolcraft College	659 (22%)	2,346 (78%)	3,005	
Lansing Community College	912 (31%)	1,987 (69%)	2,899	
Kalamazoo Valley Community College	718 (29%)	1,737 (71%)	2,455	
Henry Ford College	989 (41%)	1,404 (59%)	2,393	
Jackson College	397 (22%)	1,407 (78%)	1,804	
Kellogg Community College	525 (32%)	1,113 (68%)	1,638	
Muskegon Community College	315 (28%)	823 (72%)	1,138	
Monroe County Community College	306 (31%)	670 (69%)	976	
St. Clair County Community College	230 (25%)	697 (75%)	927	
Lake Michigan College	283 (32%)	589 (68%)	872	
Mid Michigan College	302 (36%)	534 (64%)	836	
Northwestern Michigan College	264 (33%)	538 (67%)	802	
Kirtland Community College	189 (38%)	315 (62%)	504	
Montcalm Community College	186 (39%)	296 (61%)	482	
Southwestern Michigan College	148 (33%)	306 (67%)	454	
Bay College	136 (31%)	304 (69%)	440	
North Central Michigan College	134 (37%)	231 (63%)	365	
Glen Oaks Community College	78 (28%)	196 (72%)	274	
West Shore Community College	86 (41%)	125 (59%)	211	
Alpena Community College	71 (34%)	135 (66%)	206	
Gogebic Community College	84 (42%)	114 (58%)	198	
Bay Mills Community College	31 (37%)	53 (63%)	84	
Keweenaw Bay Ojibwa Community College	2 (5%)	37 (95%)	39	
Saginaw Chippewa Tribal College	9 (53%)	8 (47%)	17	
<b>Total Students</b>	<b>16,538 (33%)</b>	<b>33,684 (67%)</b>	<b>50,222</b>	

Source: The OAG prepared this exhibit using data from MiSSG.



**Average Reconnect Grant by Community College per Student per Semester  
From September 1, 2020 Through August 31, 2023**



\* The average amount was calculated based on the individual Reconnect grant reimbursements for the approximately 34,000 students who received a Reconnect grant in at least one semester during academic years 2021 through 2023. The remaining approximate 17,000 students did not receive a Reconnect grant because other awards covered their costs, and therefore, these students were not included in the average (see Exhibit 10).

Source: The OAG prepared this exhibit using data from MiSSG.



<b>academic year</b>	<p>The period each year when students attend a community college.</p> <p>For this letter's purposes, academic year dates are as follows:</p> <ul style="list-style-type: none"><li>• 2021: September 1, 2020 through August 31, 2021</li><li>• 2022: September 1, 2021 through August 31, 2022</li><li>• 2023: September 1, 2022 through August 31, 2023</li><li>• 2024: September 1, 2023 through August 31, 2024</li></ul>
<b>Center for Educational Performance and Information</b>	<p>The agency responsible for collecting, securely managing, and reporting K-12 and postsecondary education data in Michigan.</p>
<b>contact hours</b>	<p>Extra charges for certain course and program.</p>
<b>FAFSA</b>	<p>Free Application for Federal Student Aid.</p>
<b>Future for Frontliners (F4F)</b>	<p>A State scholarship program for Michiganders without college degrees who worked in essential industries during the state COVID-19 shutdown in spring 2020. The scholarship provides frontline workers with tuition-free access to local community college to pursue an associate degree or a skills certificate, either full-time or part-time while they work.</p>
<b>Future for Frontliners (F4F) dual-eligible student</b>	<p>A community college student previously accepted into the Future for Frontliners program but later moved to the Reconnect program because of a LEO administrative decision.</p>
<b>gift aid</b>	<p>Federal Pell grants under Title 20, section of the <i>United States Code</i> and tuition incentive program benefits under section 256 of the State School Aid Act of 1979. The term does not include:</p> <ul style="list-style-type: none"><li>• Student loans.</li><li>• Work-study awards.</li><li>• Qualified withdrawals made from education savings accounts to pay higher education expenses pursuant to the Michigan Education Savings Program Act.</li><li>• Higher education expenses paid under the Michigan Educational Trust Program.</li><li>• Higher education expenses paid under the Michigan Promise Zone Authority Act.</li></ul>
<b>GPA</b>	<p>grade point average.</p>
<b>LEO</b>	<p>Department of Labor and Economic Opportunity.</p>

<b>mandatory fees</b>	Fees charged to all students per semester or per hour.
<b>MCL</b>	<i>Michigan Compiled Laws.</i>
<b>MiLEAP</b>	Michigan Department of Lifelong Education, Advancement, and Potential.
<b>Michigan Student Scholarships and Grants (MiSSG)</b>	A system that allows financial aid professionals to work with student records, clear errors, run reports, and perform awarding tasks such as certification, requesting reimbursement, and award adjustments. MiSSG also tracks and posts quarterly payments from the State to postsecondary institutions for the supported grant programs.
<b>Reconnect Short Term Training Program</b>	A career training program that provides a one-time grant not to exceed \$1,500 to contribute to tuition costs for a qualified occupational training program at a qualified private training institution under <i>MCL</i> Section 390.1721.
<b>Reconnect student</b>	Includes both a Reconnect-only student and a Future for Frontliners dual-eligible student, regardless of the Reconnect grant amount.
<b>Reconnect-only student</b>	A student accepted into the Reconnect program; specifically excludes F4F dual eligible students.
<b>Statewide Integrated Governmental Management Applications (SIGMA)</b>	The State's enterprise resource planning business process and software implementation that support budgeting, accounting, purchasing, human resource management, and other financial management activities.
<b>wraparound services</b>	Public Act 87 of 2021 appropriated funding for child care, broadband access, transportation, or other services to individuals enrolled in the Reconnect or Futures for Frontliners programs to support continued efforts to remove barriers to employment and improve student success.